

THE SPIRIT FIRE



MATCH SPONSOR

hiyacar



utilita

silverlake
Automotive recording

errea

GATESHEAD FC | ENTERPRISE NATIONAL LEAGUE | 16.08.25 | 3PM

DIRECTORY



Company name: Eastleigh Football Club Limited
Company number: 05488155
Shareholders/current ownership: SJD Leisure Limited
Stadium: Silverlake Stadium, Stoneham Lane, Eastleigh, Hampshire, SO50 9HT.
Telephone: 02380 613361
Email: admin@eastleighfc.com
Website: www.eastleighfc.com

CLUB HONOURS

Hampshire Intermediate Cup: 1950/51 Hampshire League Division 3: 1950/51, 1953/54 Hampshire League Division 2: 1969/70 Hampshire Midweek Floodlit Cup: 1979/80 Premier Division: 2002/03 Russell Cotes Cup: 2005/06 Hampshire Senior Cup: 2012/13 Conference South: 2013/14 Wessex League Cup Runners Up: 2002/03

BOARD OF DIRECTORS

Chairman: Stewart Donald

Vice Chairman: Thomas Coffey

Directors: Stewart Donald, Thomas Coffey, Mick Geddes, Richard Hill, Allen Prebble & Alex Pike

Associate Directors: Mike Wimbridge, Joseph Higgins, Chas Milner, Gary Tonner, Stuart Solly, Dr Keith D Love, Donald Iro & Paul Lucas

FOOTBALL STAFF

First Team Manager: Kelvin Davis

First Team Assistant Manager: Danny Butterfield

First Team Coach & Head of Scholarship: Jason Bristow

First Team Goalkeeping Coach: Vince Bartram

Club Physio: Sam Scarratt

First Team Strength & Conditioning Coach: Alfie Perry

Club Doctors: Dr Luke Sammut & Dr Greg Warner

First Team Technical Support: Ed Kilby

First Team Analyst: Matt Musgrove

First Team Kit Officer: Tom Crowley

Head Of Grounds: Dan Barnes

CLUB MANAGEMENT

Head of Football Operations: Jamie White

Club Secretary: Ray Murphy

Club Safety Officer: Mick Brown

Head of Media and Communications: Ricky Hart

Community Engagement Officer: Josh Nace

MATCHDAY PROGRAMME

Designer and editor: Matthew Gibbs

Contributors: James Wallace, Ricky Hart, Ed Groves & Ian Ritchie

Photographers: Graham Scambler

The views expressed in this publication are not necessarily those of Eastleigh FC.

IN THIS ISSUE

- 05 Kelvin Davis
- 06 2025/26 Home kit
- 08 Captain's notes
- 09 2025/26 Away kit
- 13 National League Fixtures
- 15 Last time out
- 19 Through the lens
- 22 Spitfire in the Spotlight
- 26 Away travel
- 29 Junior Spitfires
- 34 Introducing our new signings
- 40 Gateshead
- 51 Walking Football
- 56 Player stats
- 57 Squad list and player sponsors
- 59 Next up



PRINCIPAL PARTNERS



HERE FOR THE GAME. AND EVERYONE WHO MAKES IT HAPPEN.

With 450 Enterprise branches across the nation, you'll find us close to all 72 clubs in the National League. So we're proud to be here for everyone. From the fans, to the groundskeeper, to Pam who makes the teas.

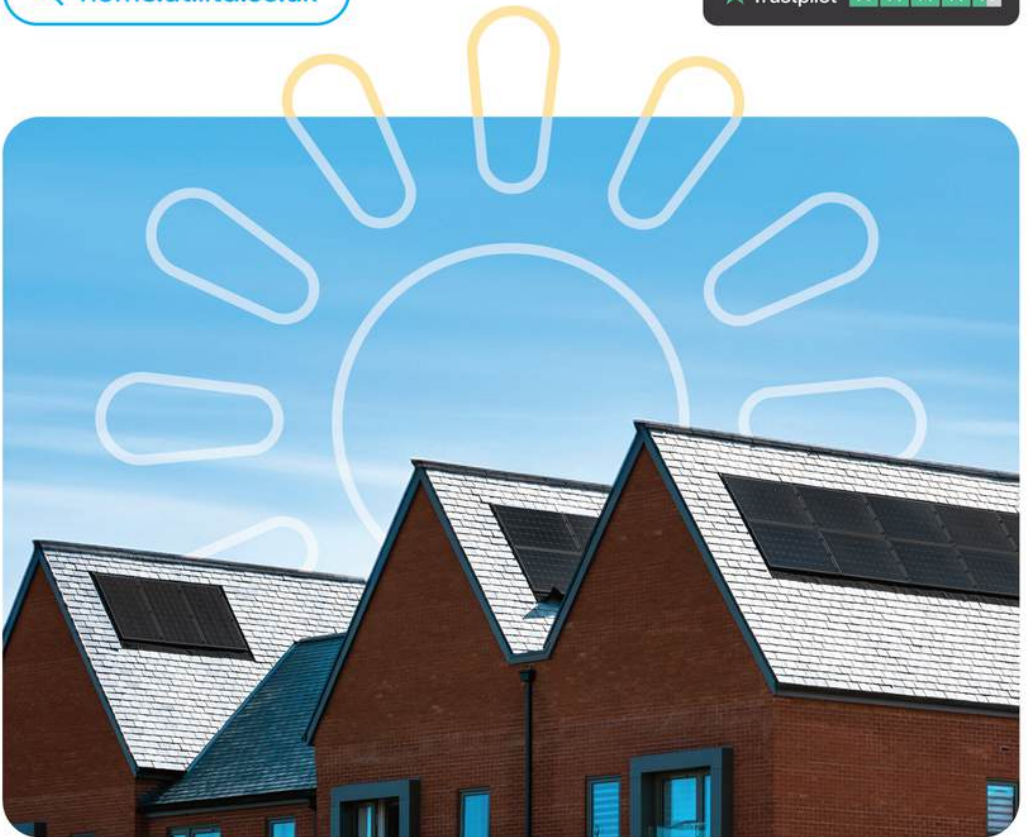


Solar today. Brighter tomorrow.

Get your FREE home survey today.

 home.utilita.co.uk

 Trustpilot 





GOOD AFTERNOON, EVERYONE AND WELCOME BACK TO THE SILVERLAKE STADIUM FOR TODAY'S NATIONAL LEAGUE FIXTURE AGAINST GATESHEAD!

I would like to start by welcoming the players, backroom staff, and fans of Gateshead who have made the long trip down to Eastleigh. Also, as always, I would like to welcome our fans that have come to the Silverlake Stadium to support us this afternoon.

You could see that Brackley were an opposition that were very much together, and they showed characteristics of a promotion team. They were very well drilled, and were very good at what they did. We matched it for most of the parts of the game on the physical side of things.

You could see that we were a fresh group, and that we were trying to build on our way. There was some confusing moments, we were going long when we needed to play, and were playing when we needed to go long. But, it is early on for us, and we have worked on things this week.

I said to the guys in the dressing room after the game that I think we could've been a lot braver on the ball. I also think we were drawn into a different style of play. We know that we have power in the air in our team, but we do not need to force opportunities.

We went long quite a few times, and that was not what we had spoken about. We needed to be stronger in ourselves as a group, and I don't think we showed the best side of ourselves on the ball.

The focus of the week has been on when the time to play is and isn't. We have got a lot of experienced guys in the dressing room, and I don't think we made the right decisions in the right moments at the weekend, so it has been an area we have looked to build on as a group.

We are all looking forward to seeing as many of you as possible with us at the Silverlake today!

Thank you all for your continued support!

Kelvin Davis

ON SALE NOW!

HOME KIT / 06

25 HOME
26 KIT





PTS COMPLIANCE

HEALTH & SAFETY SERVICES & TRAINING

We're always looking for great team players!

If you want to be part of our permanent team of fully qualified engineers or account managers, and think you have what it takes to deliver quality work and superior customer service, then get in touch.

POSITIONS AVAILABLE:

- PAT Testers
- Electricians
- Fire Extinguisher Engineers
- Fire Alarm Engineers
- New Business Sales Execs

WHAT WE OFFER:

- Competitive Salary
- 28 days holiday that rises on length of employment
- Company Pension
- Branded van and uniform
- Reward scheme
- Annual company events

To be considered for any of these roles please send your CV to lisa@ptscompliance.co.uk or find out more at www.ptscompliance.co.uk.





**JAKE
TAYLOR**

**GOOD AFTERNOON,
EVERYONE AND WELCOME
BACK TO THE SILVERLAKE
STADIUM FOR OUR NATIONAL
LEAGUE FIXTURE AGAINST
GATESHEAD!**

I would like to start by welcoming the players, backroom staff, and fans of Gateshead that have made the long trip down from the north-east to visit us today. Also, as always, I would like to welcome our fans that have come down to the Silverlake Stadium to support us this afternoon.

Obviously we didn't want to start the season off in the way in which we did. But, I don't think your season is defined after one game. We know that we are a much better side than what we were on Saturday, we are really looking forward to trying to bounce back and have a positive reaction with a nice win at home in front of our fans.

Being back in front of our home crowd will help us out massively as a team. It is important to try and win all our home games, in front of your home crowd. Playing in front of our fans gives us an extra boost to go on and get a result.

Over the last few years, we've been really good at home, and we are hoping to make that home form even better this year if we want to achieve the goals that we set out at the beginning of the season. We want to finish as high up in the table as we can, and we want to have a successful season.

We are all looking forward to seeing as many of you as possible down at the Silverlake this afternoon!

Thank you all for your continued support!

Jake Taylor

ON SALE NOW!

AWAY KIT / 09

25 AWAY
26 KIT



From the Boardroom to the Pitch. F One Technologies Keeps Your Business Connected.



Business Communications, Simplified.



SMB Reseller
of the Year
Finalist

TECHNOLOGY
RESELLER 20
AWARDS 23

SMB Reseller
of the Year
Finalist

TECHNOLOGY
RESELLER 20
AWARDS 23

MSP Provider
of the Year
Winner



Finance Team
of the Year
Finalist

Gigaset

Best After-Sales
Support
Winner

TECHNOLOGY
RESELLER 20
AWARDS 24

MSP Project
of the Year
Finalist

TECHNOLOGY
RESELLER 20
AWARDS 24

MSP Provider
of the Year
Finalist



MSP Reseller
of the Year
Finalist



Finance Team
of the Year
Finalist

Small Business
awards

Best Customer
Support 2024
Finalist

WE BUY ANY VEHICLE

**GET AN
INSTANT**
QUOTE ONLINE



**BEST
PRICE
PAID**

ANY AGE, ANY CONDITION

No hidden charges or fees • 75 years' experience



Get an instant quote



FREE Collection



Quick Payment

Enter your reg now at
silverlake.co.uk



Make a difference with udonateacar.com

Donate as little as £5 from the value of your vehicle when you sell your car to Silverlake via our charity scheme, UDonateacar. Our charity partners, Global's Make Some Noise, will ensure 100% of your donation supports local community charities.



Silverlake: Shaping a Greener Future with Community at its Heart

At Silverlake Automotive Recycling, we take pride in our role within the community. We continuously strive to make a positive impact through charitable work, environmental initiatives, partnerships, and the opportunities we provide for our staff and apprentices.

Over the years, we've built strong relationships with local organisations, supporting over 25 charities and groups this year alone, including Blue Light Trust, British Heart Foundation, Naomi House, Rainbow Trust, Swanmore Fate and Curdridge Reading Rooms play area, positively affecting lives across Hampshire and beyond. Our business is about more than just recycling; it's about making a meaningful difference to every person and company we engage with.

Our community involvement has been deeply rewarding. In 2023, we received multiple accolades at the ATF Professional Vehicle Recycling Awards, including the Community Impact Award, the Recycled Vehicle Parts Supplier Award, and the Salvage Company Award. These honours underscore our dedication to offering top-quality service while promoting eco-friendly practices and charitable initiatives.

This year, we are finalists again in three prestigious categories: Community Impact, Salvage Company of the Year, and Large Vehicle Recycling Company. These nominations highlight our commitment to high service standards and consistent contributions to our community.

Our focus on sustainability and community engagement remains central to our success. This month, we've been nominated as finalists for the Contribution to the Community Award at the Hampshire Business Awards 2024. This recognition reflects the hard work our team puts into supporting local initiatives and addressing community needs. From backing local sports teams to partnering with emergency services, we're committed to making a positive difference where it counts most.

One of our long-standing partnerships is with the Hampshire and Isle of Wight Fire and Rescue Service. For over a decade, we've provided salvage vehicles for essential training exercises, helping firefighters train for road traffic rescues. Last month, we supported the UK Rescue Organisation's Festival of Rescue, supplying over 100 vehicles for teams across the UK to hone life-saving skills. This hands-on training is vital to the safety of all road users, and we're proud to assist.

We also sponsor and partner with Eastleigh FC, where the Silverlake Stadium has become a hub for grassroots development. Earlier this year, we hosted MOTO FEST at Eastleigh, a fundraising event featuring family activities, music, and vehicle displays.

The event drew over five thousand visitors from across Hampshire and raised over £20,000 for local charities.

Our U-Donate-a-Car initiative, now 12 years old, allows donations from as little as £5 to the value of a whole vehicle, with proceeds benefiting local charities. It's a great way to recycle vehicles while contributing to worthy causes. The program is easy to participate in and supports both environmental sustainability and community well-being.

Silverlake's commitment to the community is deeply embedded in our values. We employ over 150 local staff, offering secure jobs where they can achieve their potential. As we look to the future, we have plans to grow both our business and workforce, ensuring we continue to lead by example and build a more sustainable future for everyone in our community.

We are proud to have been part of the Hampshire community for over eighty years and remain dedicated to making our community proud of us. We are committed to continually raising our contribution to the local economy as we grow and move forward.

Explore how Silverlake is shaping a greener tomorrow by visiting our consultation website: silverlakeconsultation.co.uk



THE NATIONAL LEAGUE

FIXTURES 2025/26

AUGUST

09 BRACKLEY TOWN A
16 GATESHEAD H
20 ALDERSHOT TOWN A
23 BOSTON UNITED H
25 FOREST GREEN R'VERS A
30 ALTRINCHAM H

SEPTEMBER

02 SCUNTHORPE UTD H
06 TAMWORTH A
13 FC HALIFAX TOWN A
20 BRAINTREE TOWN H
24 SOUTHEND UNITED H
27 WEALDSTONE A
30 TRURO CITY A

OCTOBER

04 SOLIHULL MOORS H
18 BOREHAM WOOD A
25 MORECAMBE H

NOVEMBER

05 SUTTON UNITED A
08 YORK CITY H
15 CARLISLE UNITED A
22 HARTLEPOOL UNITED H
29 ROCHDALE A

DECEMBER

06 BRACKLEY TOWN H
20 GATESHEAD A
26 WOKING H
30 YEOVIL TOWN A

JANUARY

03 BOSTON UNITED A
17 ALDERSHOT TOWN H
20 SOUTHEND UNITED A
24 FC HALIFAX TOWN H
31 BRAINTREE TOWN A

FEBRUARY

07 WEALDSTONE H
10 SOLIHULL MOORS A
14 BOREHAM WOOD H
21 MORECAMBE A
25 TRURO CITY H
28 CARLISLE UNITED H

MARCH

07 YORK CITY A
14 ROCHDALE H
21 HARTLEPOOL UNITED A
24 SUTTON UNITED H
28 FOREST GREEN R'VERS H

APRIL

03 WOKING A
06 YEOVIL TOWN H
11 ALTRINCHAM A
18 TAMWORTH H
25 SCUNTHORPE UNITED A

All dates are subject to change.

SUMMER

HOLIDAY FUN COURSES

9am - 3pm | Ages 5-13

EASTLEIGH FC 3G PITCH



All Abilities Welcome | First team tickets | Meet First Team Players

EUROS WEEK

WEDS 23RD JULY - FRI 25TH JULY

GOALS GALORE

MON 28TH JULY - FRI 1ST AUGUST

PREMIER LEAGUE WEEK

MON 4TH AUGUST - FRI 8TH AUGUST

CHAMPIONS LEAGUE WEEK

MON 11TH AUGUST - FRI 15TH AUGUST

WORLD CUP WEEK

MON 18TH AUGUST - FRI 22ND AUGUST

CHAMPIONSHIP WEEK

MON 25TH AUGUST - FRI 29TH AUGUST

SCAN BELOW
TO BOOK ON



SCAN ME

£20 PER DAY | £30 PER WK (WK 1) | £75 PER WK (WKS 2-6)

SPECIAL SUMMER OFFER - £200 SUMMER PASS - UNLIMITED
ACCESS ALL SUMMER - LIMITED SPACES AVAILABLE



CONTACT JOSH: JNACE@EASTLEIGHFC.COM

LAST TIME OUT

Saturday 9th August (KO 3pm)

St James Park | Attendance: 1201 (208 away)



BRACKLEY 1



EASTLEIGH 0

EASTLEIGH FELL TO DEFEAT AFTER A GOAL FROM THE PENALTY SPOT FOR RYAN HAYNES WAS ENOUGH TO GIVE BRACKLEY TOWN ALL THREE POINTS ON THE OPENING DAY OF THE SEASON

Paul McCallum took the captain's armband for Eastleigh's opening game of the season against Brackley Town, with regular skipper Jake Taylor sidelined through injury. Louie Holzman was selected in the starting XI to replace the injured Luis Fernandez, while Archie Harris filled in at left-back in the absence of Jake Vokins.

Brackley carved out the first opportunity of the match when Ryan Haynes delivered a cross from the left that found Connor Hall, but the striker's header sailed over the bar.

At the other end, Temi Eweka showed great awareness to snuff out a dangerous Brackley break. He intercepted the ball before turning defence into attack with a perfectly weighted pass down the line for McCallum. The attacker raced onto it but was unable to deliver a telling cross into the box.

Eastleigh continued to threaten, twice testing Brackley goalkeeper Cameron Gregory with close-range headers. First, Aaron Pierre met a long throw that wasn't properly cleared, and then Kieron Evans rose to meet a dangerous cross, but both efforts were straight at the 'keeper.

Brackley almost broke the deadlock on the counter when Michael Nottingham slid a pass through to Connor Hall, who squared for Matt Lowe, but Nick Townsend produced an excellent save to keep the scores level.





The hosts were awarded a penalty in the 38th minute after a long throw wasn't cleared and Josh Lundstram was adjudged to have fouled his man in the box. Shane Byrne stepped up, and confidently converted from the spot to give Brackley the lead.

Eastleigh had a golden chance to respond just a minute later when Aaron Blair raced through on goal, but his low effort was saved by Gregory – the final action of the first half.

The Spitfires started the brighter of the two sides after the restart, earning a free-kick in a promising crossing position. However, the delivery towards the back post failed to produce an attempt on goal.

Brackley came within inches of doubling their lead soon after, but heroic defending from Temi Eweka saw him block a close-range effort off the line following a goalmouth scramble.

At the other end, Eastleigh had a scramble of their own inside the Brackley box, but the loose ball eventually ran behind for a corner, which the Saints dealt with comfortably.

Townsend then came to Eastleigh's rescue once again, producing a superb save to deny Matt Lowe after the forward latched onto a long ball from his goalkeeper and went one-on-one.

With five minutes remaining, Townsend was called into action yet again, tipping over a powerful long-range strike from Morgan Roberts to keep the score at 1-0.



Report by Ed Groves

Eastleigh: Townsend (GK), Brindley, Eweka, Pierre, Holzman (Davis 66'), Harris, Cousins, Lundstram (Waruih 90') Evans (Underhill 76'), Blair, McCallum (C)

Unused Substitutes: McNamara (GK), Ingram, Killick, Michel

Brackley Town: Gregory (GK), Morrison, Dean (C), Brown, Roberts, Lowe (Pollock 90'), Nottingham, Lily, Bryce, Hall, Haynes (Calder 83')

Unused Substitutes: Maxted (GK) Donate, Waldron, Little



EVANS

7

MC CALUM

9

BLAIR

11

PERE

13

7



THROUGH THE LENS: BRACKLEY TOWN (A)







Graham Scambler Photography

Check out some of the top pics from our recent outing through the lens of official Eastleigh FC club photographer Graham Scambler.

For more photographs, check out his website by scanning the QR code for more!



“

It is a massive honour
being captain of the
football club.

”

**JAKE
TAYLOR**

SPITFIRE IN THE SPOTLIGHT



LS4
TEAMWEAR

You are now going into your second season here as captain of the club, what does that mean to you?

It is a massive honour being captain of the football club. It is something that I really enjoy doing, working closely with the manager and the players and all of the of the staff around the club. It is something that I really take pride in doing. For me, I want to be a successful captain here. It is all well and good being the captain, but you also want to leave your mark in any way, shape or form. It would be great to try and achieve things here being the captain of this football club.

You signed a new deal with the club over the summer, what were your main reasons behind doing that?

Working with the manager has been great, and he was massive on me staying. I have really enjoyed playing under him, since he came in. I think I had a really successful season from a personal point last season. I played loads of games and contributed in many different ways as well. [Kelvin Davis] knows me as a person, and knows how to get the best out of me. I want to repay the faith that he has put in me, and I want to try and make this season a successful one with him here as manager.



What are your ambitions for the season, both from a personal point as well as from a team perspective?

As we've all said, we want to finish as high up in the table as possible. The boys that have signed here all want to achieve things, and want to get us promoted out of this league. Everyone is ambitious at the club, the players are ambitious and the staff are ambitious. I think with the signings that we have made over the summer, there is no reason why we can't try to achieve promotion this year.

I want to be consistent as possible, throughout my career I have always tried to produce on a consistent basis. On and off the pitch, I want to be a positive character.



We want to create a positive environment for people to come into, and when it comes to the new signings, we want to make them as comfortable as possible.

Having a good team environment can carry you to places. I have played in plenty of teams before, where if you can get a good camaraderie around the place and that's not just the playing squad. That's the staff, the fans, if you can create a really good atmosphere it can take you to places you didn't really think you could go to. As captain of this football club, that's part of my responsibility to put that all together.

There will be difficult times this season, and there will be fantastic times too. It is important for us to all stick together so that we can achieve the goals that we want to achieve.



We've got a lot of new faces in the squad this season, have you been impressed by the quality you've seen so far?

I think the standard and mentality of players that we've got this year has been a massive step up in terms of the squad. We have brought in some really good experienced players who have played at fantastic levels, and we have also brought in some real hungry players who want to prove that they can step up and play at this level.

They have all settled in really well, and have taken to what the gaffer has instilled into the boys that have been here for a couple of years. They are good characters as well, you always want to sign good players, but it's important for them to be good people as well. All of the boys that have signed here tick all of those boxes.

25 YEARS CHAMPIONING GRASSROOTS

Shout it from the terraces, it's our anniversary! Since 2000, we've been transforming lives, giving every community great places to play sport. We're not finished yet, so here's to more game-changing investment.



Search Football
Foundation
to find out more



AWAY TRAVEL

In conjunction with the ‘1946’ supporters club, we are thrilled to announce we will be supplying coaches for every game.



Category	Adult	Child (16 & Under)
1946 Member	£20	£10
Non 1946 Member	£30	£15



Any member of the supporters club will be able to watch the Spitfires on the road for a flat rate price for any game.

In order to take advantage of the competitive pricing, please firstly ensure you have completed your membership with the supporters club by emailing 1946clubinfo@gmail.com

We look forward to welcoming as many of you on board across the season!

FAN'S FORUM: THROUGH THE LENS



hampshire*pat*testing

and electrical services tailored to suit your needs



0800 8048483

enquiries@hampshirepattesting.co.uk

www.hampshirepattesting.co.uk

JUNIORS PITFIRES

MY MATCHDAY

SCORE

EASTLEIGH _ V _ GATESHEAD

GOALSCORERS

EASTLEIGH

GATESHEAD

FREE KICKS

EASTLEIGH _

GATESHEAD _

CORNERS

EASTLEIGH _

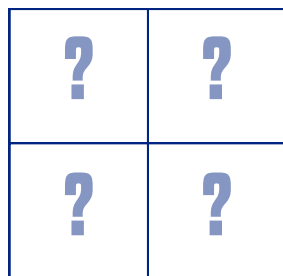
GATESHEAD _

ATTENDANCE: _____

MY MAN OF THE MATCH: _____



CAN YOU SOLVE THE JIGSAW PUZZLE?



SPOT THE DIFFERENCE

[YOU ARE LOOKING FOR FIVE]



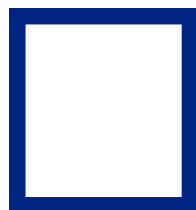
SPITFIRE SUMS



+



=



QUICKFIRE QUIZ



1. What is Gateshead's nickname?
2. Where do Gateshead play their home games?
3. Who is Gateshead's captain?
4. Who did the Spitfires play against last time out?
5. Which Eastleigh player has the number 11 on the back of their shirt?

**CAN YOU
SPOT
THE BALL?**



JUNIORSPITFIRES

ANSWERS

JIGSAW

1	2
4	3

SPITFIRE SUMS

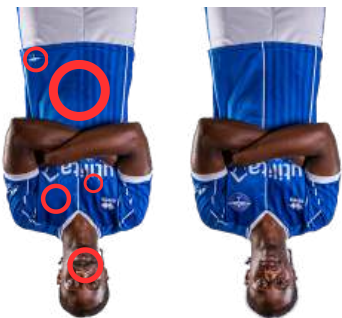
Pierre (16) + Vokins (3) = 19

SPOT THE BALL



1

SPOT THE DIFFERENCE



QUICKFIRE QUIZ

1. The Heed, 2. Gateshead International Stadium, 3. Kenton Richardson, 4. Brackley, 5. Aaron Blair





MATCHDAY FESTIVALS

COMPETE FOR A CHANCE TO PLAY ON THE
SILVERLAKE STADIUM PITCH AT HALF-TIME



£50
entry per
team

THE MATCHDAY FESTIVAL INCLUDES:

- 14 complimentary match tickets
- Additional **half-price match tickets**
- Group stages **kick-off at 12pm** with the final and play-off games on the Silverlake Stadium pitch at half-time
- Every player will be **presented with a medal** after the final whistle

MATCHDAY EXPERIENCES

MASCOT, GUARD OF HONOUR,
& BALL BOY/GIRLS



HOW TO GET INVOLVED:

If you are involved in youth team and would like to sign-up for a future matchday festival, please email **community@eastleighfc.com** to register your interest.

INTRODUCING OUR NEW SIGNINGS



1 - Nick Townsend
Position: Goalkeeper
DOB: 01/11/1994



6 - Temi Eweka
Position: Defender
DOB: 22/07/1999



7 - Kieron Evans
Position: Midfielder
DOB: 19/12/2001



11 - Aaron Blair
Position: Attacker
DOB: 20/04/2000



16 - Aaron Pierre
Position: Defender
DOB: 17/02/1993



17 - Josh Lundstram
Position: Midfielder
DOB: 19/02/1999



21 - Sonnie Davis
Position: Defender
DOB: 28/02/2005



22 - Josh McNamara
Position: Goalkeeper
DOB: 12/12/2003



23 - Louie Holzman
Position: Defender
DOB: 16/11/2003



24 - Jordan Cousins
Position: Midfielder
DOB: 06/03/1994



27 - Archie Harris
Position: Defender
DOB: 27/12/2004

**SONNIE DAVIS &
LOUIE HOLZMAN
ARE AVAILABLE TO
SPONSOR**



enterprise



NATIONAL
LEAGUE TV

FOLLOW
YOUR CLUB
ALL SEASON

Every National League game
Was £129.99 Now **£99.99**

Watch **NLTV** on **DAZN**

Offer ends 31 August 2025

ACADEMY COACHES WANTED!



At Eastleigh FC, we are looking for passionate and enthusiastic individuals to come on board as members of the academy staff.

Each role will include the following responsibilities:

- Planning coaching sessions
- Managing & running coaching sessions
- Managing your specific age group on matchdays during half terms
- To be available for any potential cover sessions.
- Ensure the safety of academy players is paramount. This includes first aid & safeguarding.
- To work closely with parents of players & also coaches across the football club

Roles available:

- Under 15's Academy Lead Coach (£25 per session) Monday's 5:30-7:00pm with fixtures during half terms (£35 per fixture).
- Under 16's Talent ID Lead Coach (£20 per session) Monday's 6-7pm with fixtures during half term.
- Talent ID Goalkeeper coach (£20 per session) Monday 5-6pm & Tuesday 5-6pm.

Desired Attributes Include:

- Previous coaching experience
- Previous experience leading matchdays at academy/grassroots level
- Excellent organisation & time-management skills
- Experience in planning and executing training sessions
- Experience in the delivery of squad warmups
- UEFA C Minimum/UEFA B desired
-

If interested, please email joastler@eastleighfc.com & ahealey@eastleighfc.com before Wednesday 15 October 2025.



Hampshire
County Council

Fostering Service



Start your fostering journey with Hampshire

What do our foster carers say?

"We have had 17 children come to live with us. Some have stayed overnight and some for years. We have gained from every single one of them and I would like to think we have made a difference in all their lives. We continue to love what we do; every single child brings with them a new experience and new hope for what we can provide for them."

Ben, Foster Carer



Contact us to start your fostering journey today:

hants.gov.uk/fostering

01489 587052

fostering@hants.gov.uk



Gateshead will make a 668 mile round trip to visit the Silverlake Stadium for this afternoon's league clash.

Last season, Gateshead missed out on a play-off spot on the final day of the season, after spending the majority of the league campaign inside of the top seven.

A goalless draw at the Gateshead International Stadium with Southend, meant that the Essex side would remain a point above Gateshead in the standings.

This season is the fourth consecutive season that the Heed have been in the National League, following three years they spent in the north division.

Alun Armstrong had taken over as head coach of the north-east side going into the 2025/26 campaign, after coaching the club's U19 side last season.

The Heed most recently tasted silverware when they won the FA Trophy just two seasons ago. They beat Solihull Moors on penalties, following a thrilling contest at Wembley Stadium.

Since the club was established in 1977, Gateshead have played their football at the Gateshead International Stadium. Their record attendance came back in 1995, when they met with Newcastle United for a pre-season friendly in front of 11,750 spectators.

PREVIOUS MEETINGS



Saturday 25th February 2025

Vanarama National League

Eastleigh 1 - 1 Gateshead



Saturday 31st August 2024

Vanarama National League

Gateshead 2 - 1 Eastleigh



Tuesday 6th February 2024

Vanarama National League

Gateshead 1 - 1 Eastleigh



Saturday 9th September 2023

Vanarama National League

Eastleigh 0-6 Gateshead



Saturday 12th April 2023

Vanarama National League

Eastleigh 2 - 5 Gateshead



THE ROUTE TO **EASTLEIGH**

334
MILES



GATESHEAD INTERNATIONAL STADIUM



SILVERLAKE STADIUM

GATESHEAD (H) ARCHIVES









3 STAR COUNTRY
HOUSE HOTEL

WEDDING
VENUE

BAR AND
RESTAURANT

COFFEE
SHOP

THE MALLYAN SPOUT HOTEL, GOATHLAND, WHITBY, YO22 5AN



M
MILLWOOD
HOTELS

For more information on the Fox & Hounds Ainthorpe and the other hotels in the Millwood Hotel Group, please go to:

www.millwoodhotels.uk



THE FOX & HOUNDS
AINTHORPE



TRADITIONAL
COUNTRY INN

BAR AND
RESTAURANT

CAMPING
PODS

HOLIDAY
COTTAGE

THE FOX & HOUNDS, 45 BROOK LANE, AINTHORPE, WHITBY, YO21 2LD



M
MILLWOOD
HOTELS

For more information on the Fox & Hounds Ainthorpe and
the other hotels in the Millwood Hotel Group, please go to:

www.millwoodhotels.uk



WALWORTH
CASTLE

12TH CENTURY CASTLE – HOTEL, BAR & RESTAURANT – WEDDING VENUE – HOLIDAY COTTAGE & LODGE

WALWORTH CASTLE, WALWORTH, DARLINGTON, DL2 2LY



M
MILLWOOD
HOTELS

For more information on the Fox & Hounds Ainthorpe and the other hotels in the Millwood Hotel Group, please go to:

www.millwoodhotels.uk

BROOKS SUITE GUEST

Do you have any involvement with football now?

No involvement. Just watching my son Lewis play for Fareham Town.

What is your best memory at Eastleigh FC?

Winning the Wessex league 02/03 with Paul Doswell & David Hughes
This included playing with Matt Le Tissier that year.

Worst memory at Eastleigh FC?

Missing out playing at Wembley in the Carlsberg Pub Cup - broken cheekbone last league game of the season.

Most memorable goal scored?

Scored a hat-trick against Lymington in the Wessex league. Wayne Shaw was in goal - The pie man - another old Eastleigh player.



DARREN COLVIN





Mitre
DIFFERENT LEAGUE



WALKING FOOTBALL

WALKING FOOTBALL / 51



AS THE NEW EASTLEIGH FC SEASON STARTS, OUR LADIES WALKING FOOTBALL SECTION HAVE JUST RETURNED FROM THEIR FIRST APPEARANCE IN THE WALKING FOOTBALL ASSOCIATION'S NATIONAL FINALS DAYS.

TWO TEAMS REPRESENTED EASTLEIGH IN THE FINALS DAYS AT GLOUCESTER. FIRST UP ON SATURDAY 26TH JULY WERE THE OVER 40'S WHO FACED A PROGRAMME OF 6 GAMES IN THE QUALIFYING STAGE. LED BY ENGLAND WALKING FOOTBALL CAPTAIN SARAH HARPER, WINS WERE SECURED AGAINST LILLIPUT (DORSET) 5 – 0 , BOURNEMOUTH 4-0, AND A DRAW WITH ALCESTER. DESPITE DEFEATS TO BIRMINGHAM, PLYMOUTH AND ABBEYMEAD, EASTLEIGH MADE IT TO THE 1/4 FINAL KNOCKOUT STAGES. THERE THEY FACED NOTTS FOREST VETS AND WENT DOWN 3 NIL.

ON SUNDAY 27TH, THE OVER 50'S FIRST OF ALL FACED FOREST VETS AND A REPEAT SCORELINE OF 3 NIL WAS NOT THE BEST OF STARTS.

0-0 DRAWS AGAINST DAWLISH AND TAUNTON FOLLOWED BUT A 4-1 DEFEAT AGAINST PLYMOUTH IN THE FINAL GAME MEANT THAT THE SIDE JUST MISSED OUT ON A 1/4 FINAL PLACE ON GOAL DIFFERENCE.

A CREDITABLE PERFORMANCE. OUR LADIES SECTION WAS FORMED JUST 2 YEARS AGO AND TO PUT UP SUCH A GOOD SHOWING IN THE NATIONAL CUP FOR THE FIRST TIME WAS ONE TO BE PROUD OF.

THE LADIES SECTION HOLD SESSIONS AT THE SILVERLAKE EVERY SUNDAY AFTERNOON AND PLAY IN OTHER TOURNAMENTS.

THE MEN'S SECTION ARE AT THE SILVERLAKE MONDAY EVENINGS AND THURSDAY DAYTIME.

Charlie's

AWARD WINNING COFFEE
MOUTH WATERING CAKES
PERFECT PASTERIES
LOADED FRIES
BREAKFAST MUFFINS
TASTY SNACKS
AND MORE...



20%

Charlie's

20%

USE THIS COUPON FOR 20% OFF ALL
PURCHASES!

Ganger Farm Way, Romsey SO51 0EE

MATCHDAY
FUEL WITH
PAPA JOHN'S

PAPA JOHN'S
Better Ingredients. Better Pizza.



**ANY LARGE
PIZZA***

£10

USE CODE : PJ10
VALID FOR DELIVERY
& COLLECTION

*Terms apply. Any additional toppings added will be charged at menu price. This offer is not available in conjunction with any other offer. Minimum delivery and delivery charges will apply. Offer can be withdrawn without notice. Only available in Eastleigh store



PAPA JOHN'S EASTLEIGH – 1C HIGH ST, EASTLEIGH, SO50 5LB



023 8065 2222



OPEN: 11AM-1AM MON-THURS, 11AM-3AM FRI-SAT

ORDER AT [PAPAJOHNS.CO.UK](https://papajohns.co.uk) OR VIA OUR APP

SUNDAY CARVERY

Two-course carvery
£17.95 per person

Served 12pm to 4pm
(last sitting at 3pm)





25/26

LEAGUE TABLE

1		Braintree Town	1	1	0	0	3	0	3	3	●
2		Southend United	1	1	0	0	3	0	3	3	●
3		Carlisle United	1	1	0	0	2	0	2	3	●
4		Rochdale	1	1	0	0	2	0	2	3	●
5		Wealdstone	1	1	0	0	2	0	2	3	●
6		Altrincham	1	1	0	0	3	2	1	3	●
7		Scunthorpe United	1	1	0	0	2	1	1	3	●
8		Brackley Town	1	1	0	0	1	0	1	3	●
9		Forest Green Rovers	1	0	1	0	2	2	0	1	●
10		Solihull Moors	1	0	1	0	2	2	0	1	●
11		Sutton United	1	0	1	0	2	2	0	1	●
12		York City	1	0	1	0	2	2	0	1	●
13		Hartlepool United	1	0	1	0	0	0	0	1	●
14		Yeovil Town	1	0	1	0	0	0	0	1	●
15		Boston United	0	0	0	0	0	0	0	0	
16		Morecambe	0	0	0	0	0	0	0	0	
17		Aldershot Town	1	0	0	1	2	3	-1	0	●
18		Tamworth	1	0	0	1	1	2	-1	0	●
19		Eastleigh	1	0	0	1	0	1	-1	0	●
20		Boreham Wood	1	0	0	1	0	2	-2	0	●
21		Truro City	1	0	0	1	0	2	-2	0	●
22		Woking	1	0	0	1	0	2	-2	0	●
23		FC Halifax Town	1	0	0	1	0	3	-3	0	●
24		Gateshead	1	0	0	1	0	3	-3	0	●

OTHER VANARAMA NATIONAL LEAGUE FIXTURES TODAY

Rochdale vs Altrincham
Aldershot Town vs Boston United
Carlisle United vs Boreham Wood
Forest Green Rovers vs Yeovil Town
Hartlepool United vs Braintree Town

Scunthorpe United vs Woking
Southend United vs Tamworth
Sutton United vs Solihull Moors
Wealdstone vs FC Halifax Town
Truro City vs York City

[illegible]

SQUAD LIST AND SPONSORS

1 NICK TOWNSEND



David Bowen Consultancy

2 RICHARD BRINDLEY



H A LASER

3 JAKE VOKINS



Glanville Solicitors

4 LLOYD HUMPHRIES



Neptune Window Cleaning

5 LUIS FERNANDEZ



Accord Accountants

6 TEMI EWEKA



Candidsky

7 KIERON EVANS



Gascare

8 JAKE TAYLOR



Waterfront Restaurant

9 PAUL MCCALLUM



Hampshire PAT Testing

11 AARON BLAIR



Fred & Alex Cole

16 AARON PIERRE



Vision Financial Strategies

17 JOSH LUNDSTRAM



The Badgeman

18 ANGEL WARUIH



The IRO's

21 SONNIE DAVIS



Available to sponsor

22 JOSH MCNAMARA



Sandgar LLC

SQUAD LIST AND SPONSORS

23

LOUIE HOLZMAN



Available to sponsor

24

JORDAN COUSINS



CK Scaffolding

27

ARCHIE HARRIS



RSW Law

30

CONNOR UNDERHILL



WTD Distributions

31

NIALL MAHER



InScapes

34

FREDDIE INGRAM



Available to sponsor

35

COBY KILICK



Available to sponsor

36

ETHAN JONES



Available to sponsor

37

CHASE MICHEL



Available to sponsor

Player sponsorship packages are available at £500 + VAT

Receive a framed signed shirt or signed photo and get your sponsor logo / name on the player profile in the matchday programme and the official club website.

If you are interested in sponsoring a player, please contact commercial@eastleighfc.com

BRIDLEY

NEXT UP



UPCOMING FIXTURES



ALDERSHOT TOWN VS EASTLEIGH

Wednesday 20th August (KO 7:45pm)
The EBB Stadium



FOREST GREEN ROVERS VS EASTLEIGH

Monday 25th August (KO 3pm)
The Fully Charged New Lawn Stadium



EASTLEIGH VS BOSTON UNITED

Saturday 23rd August (KO 3pm)
Silverlake Stadium



EASTLEIGH VS ALTRINCHAM

Saturday 30th August (KO 3pm)
Silverlake Stadium

Get behind the Spitfires!

Home match tickets are now on sale and
available to purchase at
www.eastleighfc.com/tickets
or by scanning the QR code





EASTLEIGH

Manager: Kelvin Davis



GATESHEAD

Manager: Alun Armstrong

	Starting	Substitute	Yellow card	Red card	Goals
1 Nick TOWNSEND (GK)					
2 Richard BRINDLEY					
3 Jake VOKINS					
4 Lloyd HUMPHRIES					
5 Luis FERNANDEZ					
6 Temi EWEKA					
7 Kieron EVANS					
8 Jake TAYLOR (C)					
9 Paul McCALLUM					
11 Aaron BLAIR					
16 Aaron PIERRE					
17 Josh LUNDSTRAM					
18 Angel WARUIH					
21 Sonnie DAVIS					
22 Josh McNAMARA (GK)					
23 Louie HOLZMAN					
24 Jordan COUSINS					
27 Archie HARRIS					
30 Connor UNDERHILL					
31 Niall MAHER					
34 Freddie INGRAM					
35 Coby KILLICK					
36 Ethan JONES					
37 Chase MICHEL					

	Starting	Substitute	Yellow card	Red card	Goals
1 Tiernan BROOKS (GK)					
2 Callum JOHNSON					
3 David FERGUSON					
5 Kenton RICHARDSON (C)					
6 Will FLINT					
7 Kain ADOM					
8 Max SHEAF					
9 Dom TELFORD					
10 Jacob BUTTERFIELD					
11 Tyrelle NEWTON					
13 Preston LEECH (GK)					
14 Frank NOUBLE					
16 Lucas LOWERY					
17 Josh HOME					
18 Joe GRAYSON					
20 Fenton JOHN					
21 Kyle HURST					
23 Ethan FITZHUGH					
26 Connor PANI					
31 Ben WILLIAMS					
32 Harry CHAPMAN					
33 George SHELVEY (GK)					
35 Callum BONE					
37 Carter MILMORE					
39 Oli THOMPSON					

MATCH OFFICIALS

Referee: James Hooper

Assistants: David Pilling
& Matthew Norton

Fourth official: Mark Pottage



UP NEXT AT THE SILVERLAKE

Eastleigh vs Boston United
Saturday 23rd August (KO 3pm)