

THE SPIRITFIRE



ALTRINCHAM | ENTERPRISE NATIONAL LEAGUE | 30.08.25 | 3PM

DIRECTORY



Company name: Eastleigh Football Club Limited
Company number: 05488155
Shareholders/current ownership: SJD Leisure Limited
Stadium: Silverlake Stadium, Stoneham Lane, Eastleigh, Hampshire, SO50 9HT.
Telephone: 02380 613361
Email: admin@eastleighfc.com
Website: www.eastleighfc.com

CLUB HONOURS

Hampshire Intermediate Cup: 1950/51 Hampshire League Division 3: 1950/51, 1953/54 Hampshire League Division 2: 1969/70 Hampshire Midweek Floodlit Cup: 1979/80 Premier Division: 2002/03 Russell Cotes Cup: 2005/06 Hampshire Senior Cup: 2012/13 Conference South: 2013/14 Wessex League Cup Runners Up: 2002/03

BOARD OF DIRECTORS

Chairman: Stewart Donald
Vice Chairman: Thomas Coffey
Directors: Stewart Donald, Thomas Coffey, Mick Geddes, Richard Hill, Allen Prebble & Alex Pike
Associate Directors: Mike Wimbridge, Joseph Higgins, Chas Milner, Gary Tonner, Stuart Solly, Dr Keith D Love, Donald Iro & Paul Lucas

FOOTBALL STAFF

First Team Manager: Kelvin Davis
First Team Assistant Manager: Danny Butterfield
First Team Coach & Head of Scholarship: Jason Bristow
First Team Goalkeeping Coach: Vince Bartram
Club Physio: Sam Scarratt
Club Doctors: Dr Luke Sammut & Dr Greg Warner
First Team Technical Support: Ed Kilby
First Team Analyst: Matt Musgrove
First Team Kit Officer: Tom Crowley
Head Of Grounds: Dan Barnes

CLUB MANAGEMENT

Head of Football Operations: Jamie White
Club Secretary: Ray Murphy
Club Safety Officer: Mick Brown
Head of Media and Communications: Ricky Hart
Community Engagement Officer: Josh Nace

MATCHDAY PROGRAMME

Designer and editor: Matthew Gibbs
Contributors: James Wallace, Ricky Hart, Ed Groves & Ian Ritchie
Photographers: Graham Scambler

The views expressed in this publication are not necessarily those of Eastleigh FC.

IN THIS ISSUE

- 05 Manager's Notes
- 06 2025/26 Home kit
- 08 Captain's Notes
- 09 Hampshire Senior Cup Draw
- 13 2025/26 Away Kit
- 14 Last Time Out
- 18 Through the Lens
- 22 Spitfire in the Spotlight
- 27 Freddie Ingram
- 29 Junior Spitfires
- 38 Away Travel
- 41 Altrincham
- 51 Walking Football
- 56 Player Stats
- 57 Squad List and Player Sponsors
- 59 Next Up



PRINCIPAL PARTNERS



HERE FOR THE GAME. AND EVERYONE WHO MAKES IT HAPPEN.

With 450 Enterprise branches across the nation, you'll find us close to all 72 clubs in the National League. So we're proud to be here for everyone. From the fans, to the groundskeeper, to Pam who makes the teas.

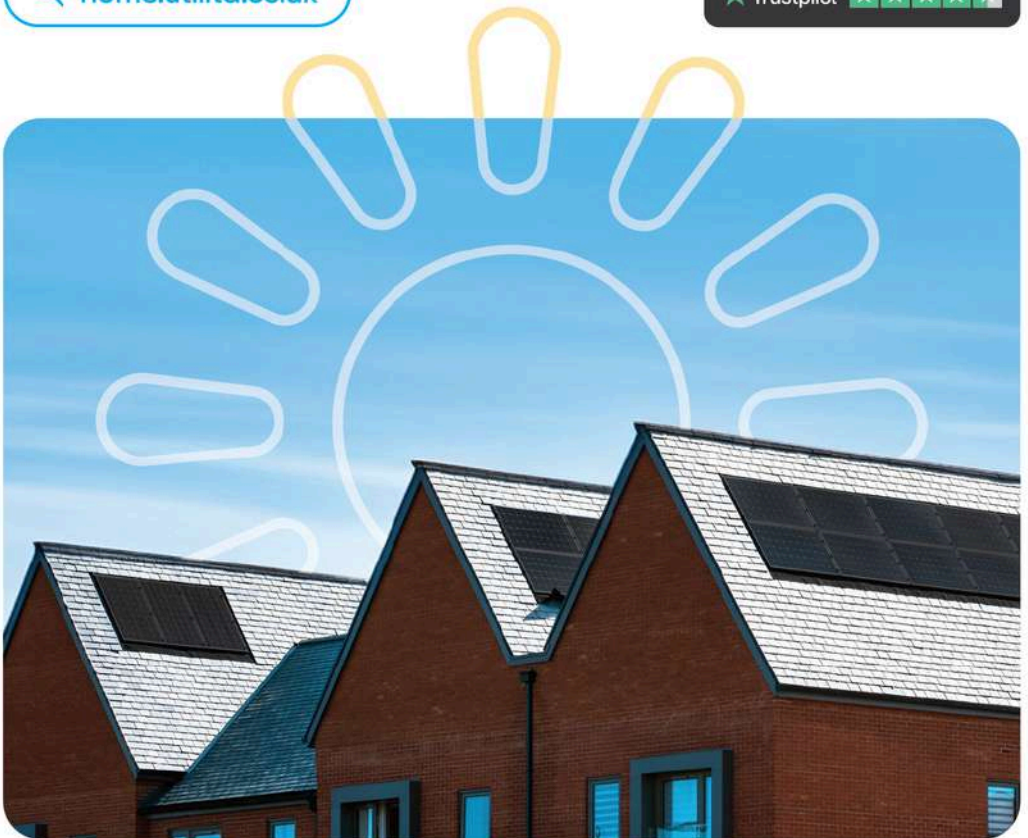


Solar today. Brighter tomorrow.

Get your FREE home survey today.

 home.utilita.co.uk

 Trustpilot 





KELVIN DAVIS

GOOD AFTERNOON, EVERYONE AND WELCOME BACK TO THE SILVERLAKE STADIUM FOR TODAY'S NATIONAL LEAGUE FIXTURE AGAINST ALTRINCHAM!

I would like to start by welcoming the players, backroom staff, and fans of Altrincham who have made the trip down from Lancashire. Also, as always, I would like to welcome our fans that have come along to the Silverlake Stadium to support us today.

I thought we had a fantastic away performance at Forest Green, all things considered. We were broken by a long-range free-kick right at the end. It felt like we lost one point rather than three that day. We take the good stuff and move on.

It's no secret that successful teams are normally very good at home. We want to continue with that same mentality and focus. If we put in a performance similar to the level we did against Boston here last week, then we should not be too far away from a positive result.

The last time Altrincham visited us at the Silverlake, I thought we were very much in the game last year, up until the sending off we had which changed the course of the entire game.

We've come to know what to expect against Altrincham. They have a very well organised and experienced manager at this level, and they are also a team which has a lot of good players.

They have players that can hurt us on their day, so we need to be aware of what their threats are so that we can combat them as best as we can.

It will be good to be back at home, and be back in front of our fans at the Silverlake again.

We are hoping to see as many of you as possible joining us at the game today!

Thank you all for your continued support!

Kelvin Davis

ON SALE NOW!

HOME KIT / 06

25 HOME
26 KIT





PTS COMPLIANCE
HEALTH & SAFETY SERVICES & TRAINING

We're always looking for great team players!

If you want to be part of our permanent team of fully qualified engineers or account managers, and think you have what it takes to deliver quality work and superior customer service, then get in touch.

POSITIONS AVAILABLE:

- PAT Testers
- Electricians
- Fire Extinguisher Engineers
- Fire Alarm Engineers
- New Business Sales Execs

WHAT WE OFFER:

- Competitive Salary
- 28 days holiday that rises on length of employment
- Company Pension
- Branded van and uniform
- Reward scheme
- Annual company events

To be considered for any of these roles please send your CV to lisa@ptscompliance.co.uk or find out more at www.ptscompliance.co.uk.





WELCOME BACK TO THE SILVERLAKE STADIUM FOR THIS AFTERNOON'S NATIONAL LEAGUE FIXTURE AGAINST ALTRINCHAM!

Firstly, I would like to welcome the players, backroom staff, and fans of Altrincham that have made the long trip down from Greater Manchester to visit us today. As always, I would also like to welcome our fans that have come down to the Silverlake Stadium to support us this afternoon.

We got unlucky at the end against Forest Green in our last game. We worked really hard throughout the game, and put in a lot of hard work. We deserved to get something from the game, so it was a shame for us to concede so late on. The fans turned out in good numbers for us and we wanted to repay that.

Last time we were at home, we picked up a really good result against a good side in Boston United. Aaron Blair took both of his goals really well that day.

We are excited to now be back at home again, Altrincham are a good side who have always been a tough test for us. Hopefully we can return to winning ways, and get a good result for all of you.

We have had a busy start to the season, and there has definitely been positives for us to take going forward.

All of us are looking forward to seeing as many of you as possible down at the Silverlake this afternoon!

Thank you all for your continued support!

Jake Taylor



TUESDAY 9TH SEPTEMBER 2025 | 7:45PM
SILVERLAKE STADIUM



From the Boardroom to the Pitch.

F One Technologies Keeps Your Business Connected.



Business Communications, Simplified.



SMB Reseller
of the Year
Finalist



TECHNOLOGY
RESELLER
AWARDS 23
Finalist



TECHNOLOGY
RESELLER
AWARDS 23
Winner



Customer
CHAMPIONS
2023
Finalist



Giganet
Best After-Sales
Support
Winner



TECHNOLOGY
RESELLER
AWARDS 24
Finalist



TECHNOLOGY
RESELLER
AWARDS 24
Finalist



Customer
CHAMPIONS
2024
Finalist



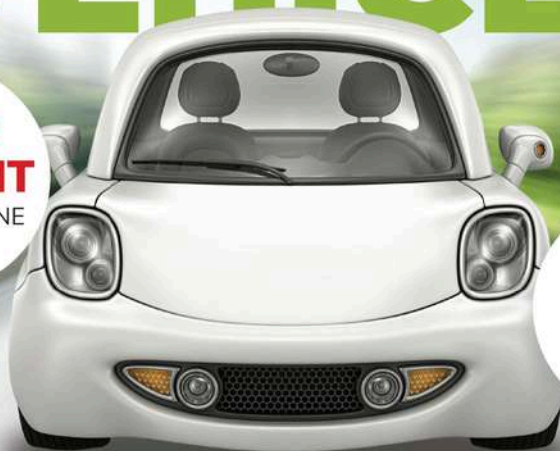
Customer
CHAMPIONS
2024
Finalist



CMA
Best Customer
Service 2024
Finalist

WE BUY ANY VEHICLE

**GET AN
INSTANT**
QUOTE ONLINE



**BEST
PRICE
PAID**

ANY AGE, ANY CONDITION

No hidden charges or fees • 75 years' experience



Get an instant quote



FREE Collection



Quick Payment

Enter your reg now at
silverlake.co.uk



Make a difference with udonateacar.com

Donate as little as £5 from the value of your vehicle when you sell your car to Silverlake via our charity scheme, UDonateacar. Our charity partners, Global's Make Some Noise, will ensure 100% of your donation supports local community charities.



Silverlake: Shaping a Greener Future with Community at its Heart

At Silverlake Automotive Recycling, we take pride in our role within the community. We continuously strive to make a positive impact through charitable work, environmental initiatives, partnerships, and the opportunities we provide for our staff and apprentices.

Over the years, we've built strong relationships with local organisations, supporting over 25 charities and groups this year alone, including Blue Light Trust, British Heart Foundation, Naomi House, Rainbow Trust, Swanmore Fate and Curdridge Reading Rooms play area, positively affecting lives across Hampshire and beyond. Our business is about more than just recycling; it's about making a meaningful difference to every person and company we engage with.

Our community involvement has been deeply rewarding. In 2023, we received multiple accolades at the ATF Professional Vehicle Recycling Awards, including the Community Impact Award, the Recycled Vehicle Parts Supplier Award, and the Salvage Company Award. These honours underscore our dedication to offering top-quality service while promoting eco-friendly practices and charitable initiatives.

This year, we are finalists again in three prestigious categories: Community Impact, Salvage Company of the Year, and Large Vehicle Recycling Company. These nominations highlight our commitment to high service standards and consistent contributions to our community.

Our focus on sustainability and community engagement remains central to our success. This month, we've been nominated as finalists for the Contribution to the Community Award at the Hampshire Business Awards 2024. This recognition reflects the hard work our team puts into supporting local initiatives and addressing community needs. From backing local sports teams to partnering with emergency services, we're committed to making a positive difference where it counts most.

One of our long-standing partnerships is with the Hampshire and Isle of Wight Fire and Rescue Service. For over a decade, we've provided salvage vehicles for essential training exercises, helping firefighters train for road traffic rescues. Last month, we supported the UK Rescue Organisation's Festival of Rescue, supplying over 100 vehicles for teams across the UK to hone life-saving skills. This hands-on training is vital to the safety of all road users, and we're proud to assist.

We also sponsor and partner with Eastleigh FC, where the Silverlake Stadium has become a hub for grassroots development. Earlier this year, we hosted MOTO FEST at Eastleigh, a fundraising event featuring family activities, music, and vehicle displays.

The event drew over five thousand visitors from across Hampshire and raised over £20,000 for local charities.

Our U-Donate-a-Car initiative, now 12 years old, allows donations from as little as £5 to the value of a whole vehicle, with proceeds benefiting local charities. It's a great way to recycle vehicles while contributing to worthy causes. The program is easy to participate in and supports both environmental sustainability and community well-being.

Silverlake's commitment to the community is deeply embedded in our values. We employ over 150 local staff, offering secure jobs where they can achieve their potential. As we look to the future, we have plans to grow both our business and workforce, ensuring we continue to lead by example and build a more sustainable future for everyone in our community.

We are proud to have been part of the Hampshire community for over eighty years and remain dedicated to making our community proud of us. We are committed to continually raising our contribution to the local economy as we grow and move forward.

Explore how Silverlake is shaping a greener tomorrow by visiting our consultation website: silverlakeconsultation.co.uk

ON SALE NOW!

AWAY KIT / 13

25 AWAY
26 KIT



LAST TIME OUT

Monday 25th August (KO 3pm)

The New Lawn | Attendance: 2,203 (128 away)



FOREST GREEN 1



EASTLEIGH

0

EASTLEIGH FELL TO A 1-0 DEFEAT ON THE ROAD TO FOREST GREEN ROVERS AFTER A LATE WINNER CAME FROM A FREE-KICK AT THE NEW LAWN STADIUM.

In a game that was so close to ending with points shared between the two sides, Eastleigh battled hard to withstand heavy Forest Green pressure after the break. Nick Townsend pulled off a string of superb saves and Louie Holzman made vital blocks, but Knowles' 25-yard strike was enough to separate the sides and hand the hosts all three points.

The first real effort of the game arrived in the 10th minute, as both sides looked to settle into the contest. A Forest Green corner was cleared only as far as Jayden Clarke on the edge of the box, but his shot was comfortably dealt with by Townsend in the Eastleigh goal.

Moments later, Eastleigh threatened themselves from a corner, but the hosts quickly turned defence into attack, breaking forward at pace. Fortunately for the Spitfires, Angel Waruih showed brilliant recovery work to win the ball back and halt what looked a dangerous counter.



In the 19th minute, Eastleigh carved out a golden opportunity to take the lead. Archie Harris found space down the left and fired a low cross into the path of Kieron Evans. With his back to goal, Evans spun sharply and got his shot away, only to see it saved easily by Luke McNicholls.

Forest Green responded with chances of their own. On 25 minutes, Clarke whipped in a dangerous free-kick to the back post that just evaded Kairo Mitchell but almost sneaked inside the far corner. A minute later, the hosts were gifted another opportunity when a mix-up between Richard Brindley and Townsend handed them an indirect free-kick inside the area. It was laid to Nick Haughton who struck it well, but Temi Eweka produced a vital block on the line to keep the scores level.





Forest Green came out strongly after the restart, immediately putting Eastleigh under pressure. Substitute Holzman made a crucial block to deny a header from a corner that looked destined for goal, though the loose ball fell to Kengis, who could only blaze his effort well over the bar.

The hosts continued to press, with substitute Bamba injecting pace and energy into their attacks. Picking the ball up inside his own half, he surged past several challenges before Archie Harris stepped in with a perfectly timed interception to snuff out the danger.

Bamba remained a constant threat, this time bursting past Aaron Pierre down the left flank before drilling a low ball across goal. Once again, Holzman was in the right place to cut it out before it reached Mitchell.

Forest Green's persistence forced Eastleigh onto the back foot, but the Spitfires matched their intensity with determined defending. Tre Pemberton's cross was met by Whitwell inside the box, and his effort took a deflection that wrong-footed Townsend, but the Eastleigh goalkeeper reacted superbly, getting a fingertip to push it around the post.

The pressure showed no sign of easing as Bamba went close once more, cutting inside and unleashing a strike bound for the top-left corner. Townsend, however, stood firm yet again, producing another outstanding save to preserve his clean sheet.

The Rovers pressure eventually led to the opener when Tom Knowles free-kick found the back of the net from 25 yards out in the 94th minute. This was also the last action of the game ending the scoring as 1-0 to Forest Green Rovers.

Report by Ed Groves



Eastleigh: Townsend (GK), Brindley, Eweka, Pierre, Fernandez (Holzman 45'), Harris, Cousins, Taylor (C) (Underhill 73'), Evans (Lundstram 54' Davis 84') Waruih, Blair (Ingram 85')

Unused Substitutes: McNamara

Forest Green Rovers: McNicholas (GK), Kengi (Cardwell 72'), Mendy, Mcallister, Haughton (Bamba 45'), Clarke (Whitwell 45'), Moore-Taylor (C), Moore (Knowles 54'), Pemberton, Mitchell, Kanu

Unused Substitutes: Pagel, Bunker



THROUGH THE LENS: FOREST GREEN ROVERS (A)







Graham Scambler Photography

Check out some of the top pics from our recent outing through the lens of official Eastleigh FC club photographer Graham Scambler.

For more photographs, check out his website by scanning the QR code for more!





THE NATIONAL LEAGUE

FIXTURES 2025/26

AUGUST

09 BRACKLEY TOWN A
16 GATESHEAD H
20 ALDERSHOT TOWN A
23 BOSTON UNITED H
25 FOREST GREEN R'VERS A
30 ALTRINCHAM H

SEPTEMBER

02 SCUNTHORPE UTD H
06 TAMWORTH A
13 FC HALIFAX TOWN A
20 BRAINTREE TOWN H
24 SOUTHEND UNITED H
27 WEALDSTONE A
30 TRURO CITY A

OCTOBER

04 SOLIHULL MOORS H
18 BOREHAM WOOD A
25 MORECAMBE H

NOVEMBER

05 SUTTON UNITED A
08 YORK CITY H
15 CARLISLE UNITED A
22 HARTLEPOOL UNITED H
29 ROCHDALE A

DECEMBER

06 BRACKLEY TOWN H
20 GATESHEAD A
26 WOKING H
30 YEOVIL TOWN A

JANUARY

03 BOSTON UNITED A
17 ALDERSHOT TOWN H
20 SOUTHEND UNITED A
24 FC HALIFAX TOWN H
31 BRAINTREE TOWN A

FEBRUARY

07 WEALDSTONE H
10 SOLIHULL MOORS A
14 BOREHAM WOOD H
21 MORECAMBE A
25 TRURO CITY H
28 CARLISLE UNITED H

MARCH

07 YORK CITY A
14 ROCHDALE H
21 HARTLEPOOL UNITED A
24 SUTTON UNITED H
28 FOREST GREEN R'VERS H

APRIL

03 WOKING A
06 YEOVIL TOWN H
11 ALTRINCHAM A
18 TAMWORTH H
25 SCUNTHORPE UNITED A

All dates are subject to change.

“

Since I last played in
the league, the quality
has gone up.

”



TEMI
EWKA

SPITFIRE IN THE SPOTLIGHT

How've you been finding your time at Eastleigh so far?

Yeah, it's been good! The lads have been great, and the staff have been great and everyone has been good.

Obviously, the performances on the pitch have picked up since the Brackley game. We've had a good start, we just need to start putting in consistent performances now.

You got your first goal for the club against Aldershot, can you describe how good that feeling was?

The night before, I had been winding up Aaron Blair, telling him that he hasn't scored yet, and he was telling me that I hadn't kept a clean sheet! But then he scored to make it 1-0, and I scored to make it three.

The goal was good, when it comes to corners we just try to win first or second contact so it was just about attacking the ball. They left me free, so that's what I did.

You have previous National League experience from your time at Maidenhead United, what have you been able to take from that to help you to settle back into the league now?

I didn't play too many games at Maidenhead as I was a bit younger. Obviously, it is a step up from the south. You've got to be more physical and more aggressive.

Since I last played in the league, the quality has gone up. Teams want to play a bit more, and they've got higher quality players.



You came through the academy at Dartford. How did you find those years?

It was good to be fair! You wouldn't believe that back then I used to be a centre mid or a winger! I was just playing football every day, at that time I didn't understand how far my career could've gone. I met some friends that I am still friends with now, and I learned things about myself and about football, so yeah it was good.



What is your first footballing memory?

I must have been about seven or eight, and I was playing at a team called Long Lane. I remember that we were playing, and then I just left the game midway so that I could go and climb a tree! Obviously I didn't really understand what I was meant to do, and then my mum came over and was telling me to get down!

Who was your idol when you were growing up?

My idol was Thierry Henry. Like I said earlier, I was a winger. Also, I loved Arsenal so I think he had to be my idol.



Do you have any pre-match routines or superstitions?

To be fair, recently, since last season I will have half a Red Bull, and Aaron Blair will have the other half. Then at half-time we will do the same again, so yeah we do that every game!

Temi Eweka is sponsored by Candidsky



25 YEARS CHAMPIONING GRASSROOTS

Shout it from the terraces, it's our anniversary! Since 2000, we've been transforming lives, giving every community great places to play sport. We're not finished yet, so here's to more game-changing investment.

Search Football
Foundation
to find out more



INGRAM MAKES PRO DEBUT



In our last home match against Boston United, Kelvin Davis handed EDS player, Freddie Ingram his pro debut.

Coming on as a 59th minute substitute, Ingram impressed for the Spitfires and provided lots of energy from off the bench.

Two days later, he made his second professional appearance for the Spitfires away at Forest Green Rovers.

After impressing in pre-season, Ingram was handed a squad number, alongside three of his EDS teammates. The youngster started in pre-season games away from home against Farnborough and Maidenhead United.

Ingram played a key role in Eastleigh's National Youth Alliance League Cup winning side last season.



hampshire*pat*testing

and electrical services tailored to suit your needs



0800 8048483

enquiries@hampshirepattesting.co.uk

www.hampshirepattesting.co.uk

JUNIORS PITFIRES

MY MATCHDAY

SCORE

EASTLEIGH _ V _ ALTRINCHAM

GOALSCORERS

EASTLEIGH

ALTRINCHAM

FREE KICKS

EASTLEIGH _

ALTRINCHAM _

CORNERS

EASTLEIGH _

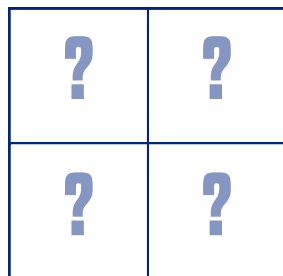
ALTRINCHAM _

ATTENDANCE: _____

MY MAN OF THE MATCH: _____



CAN YOU SOLVE THE JIGSAW PUZZLE?



SPOT THE DIFFERENCE 🔍

[YOU ARE LOOKING FOR FIVE]



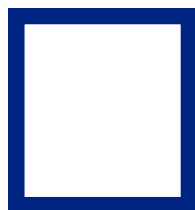
SPITFIRE SUMS



—



=



QUICKFIRE QUIZ



1. What is Altrincham's nickname?
2. Where do Altrincham play their home games?
3. How many times did the Spitfires play against Altrincham last season?
4. Who was the Spitfires' last home game against?
5. Which Eastleigh player has the number 17 on the back of their shirt?

**CAN YOU
SPOT
THE BALL?**



JUNIORSPITFIRES

ANSWERS

JIGSAW

2	1
3	4

SPITFIRE SUMS

McCallum (9) - Brindley (2) = 7

QUICKFIRE QUIZ

1. The Robins, 2. J Davison Stadium, 3. 3,
4. Boston United, 5. Josh Lundstram

SPOT THE DIFFERENCE



SPOT THE BALL

2





MATCHDAY FESTIVALS

COMPETE FOR A CHANCE TO PLAY ON THE
SILVERLAKE STADIUM PITCH AT HALF-TIME



£50
entry per
team

THE MATCHDAY FESTIVAL INCLUDES:

- 14 complimentary match tickets
- Additional **half-price match tickets**
- Group stages **kick-off at 12pm** with the final and play-off games on the Silverlake Stadium pitch at half-time
- Every player will be **presented with a medal** after the final whistle

MATCHDAY EXPERIENCES

MASCOT, GUARD OF HONOUR,
& BALL BOY/GIRLS



HOW TO GET INVOLVED:

If you are involved in youth team and would like to sign-up for a future matchday festival, please email **community@eastleighfc.com** to register your interest.

Ethical Business Group
(01675 629601) www.ethicalgroup.co.uk

looking after your business costs
(past, present and future)

SWIPE



your business costs
(present and future)

Ethical Business Group

looking after
past,

FOR



THE CELEBRATION





FOLLOW
your CLUB
ALL SEASON

Every National League game
Was £129.99 Now **£99.99**

Watch **NLTV** on **DAZN**

Offer ends 31 August 2025

AWAY TRAVEL

In conjunction with the '1946' supporters club, we are thrilled to announce we will be supplying coaches for every game.



Category	Adult	Child (16 & Under)
1946 Member	£20	£10
Non 1946 Member	£30	£15



Any member of the supporters club will be able to watch the Spitfires on the road for a flat rate price for any game.

In order to take advantage of the competitive pricing, please firstly ensure you have completed your membership with the supporters club by emailing 1946clubinfo@gmail.com

We look forward to welcoming as many of you on board across the season!

ACADEMY COACHES WANTED!



At Eastleigh FC, we are looking for passionate and enthusiastic individuals to come on board as members of the academy staff.

Each role will include the following responsibilities:

- Planning coaching sessions
- Managing & running coaching sessions
- Managing your specific age group on matchdays during half terms
- To be available for any potential cover sessions.
- Ensure the safety of academy players is paramount. This includes first aid & safeguarding.
- To work closely with parents of players & also coaches across the football club

Roles available:

- Under 15's Academy Lead Coach (£25 per session) Monday's 5:30-7:00pm with fixtures during half terms (£35 per fixture).
- Under 16's Talent ID Lead Coach (£20 per session) Monday's 6-7pm with fixtures during half term.
- Talent ID Goalkeeper coach (£20 per session) Monday 5-6pm & Tuesday 5-6pm.

Desired Attributes Include:

- Previous coaching experience
- Previous experience leading matchdays at academy/grassroots level
- Excellent organisation & time-management skills
- Experience in planning and executing training sessions
- Experience in the delivery of squad warmups
- UEFA C Minimum/UEFA B desired
-

If interested, please email joastler@eastleighfc.com & ahealey@eastleighfc.com before Wednesday 15 October 2025.



PROUDLY SPONSORED BY:

GENIO
ACCOUNTANTS

EASTLEIGH FC GOLF DAY

Friday 17th October 2025

Boundary Lakes Golf Course

The Utilita Bowl, Southampton, SO30 3XH

Including:

Two-course meal | Goody bag | Q&A with VIP guest
Exclusive auction prizes | Raffle Prize table
Chance to win hospitality for four
at Eastleigh FC

Teams of four at **£450**

Hole sponsorship available at **£180**

***All prices inclusive of VAT**

To book, please call **02380 613 361** or
email **alexpik@eastleighfc.com**



Altrincham will make a 426 mile round trip to visit the Silverlake Stadium for this afternoon's league clash.

The Robins play their home matches at the J Davidson Stadium, which has housed them since 1910.

In their first year at their new ground, they joined Division Two of the Lancashire Combination, and finished as runners up, only missing out on promotion due to having less average goals than the side above them in the standings.

The Robins' all time top goal scorer is Jackie Swindells, who racked up a tally of 252 goals in just six years of playing for Altrincham.

Altrincham have earned promotion to the National League on four occasions. They most recently came up via the play-offs in the 2019-20 season, and have remained in the division since.

The 2023/24 season saw them achieve their highest ever finish in the league, with 4th. In the play-offs, they were beaten 3-1 by Bromley at Hayes Lane, with the Greater London side going on to earn promotion at Wembley Stadium.

The Robins have started off the 2025/25 National League campaign with two wins, and three defeats, with their most recent win coming last time out against Solihull Moors at the J Davidson Stadium.

PREVIOUS MEETINGS



Saturday 1st February 2025
Isuzu FA Trophy
Altrincham 1-0 Eastleigh



Saturday 18th January 2025
Vanarama National League
Eastleigh 1-2 Altrincham



Saturday 24th August 2024
Vanarama National League
Altrincham 0-1 Eastleigh



Saturday 27th January 2024
Vanarama National League
Altrincham 4-0 Eastleigh



Saturday 18th November 2023
Vanarama National League
Eastleigh 2-1 Altrincham



THE ROUTE TO **EASTLEIGH**

213
MILES



J DAVIDSON STADIUM



SILVERLAKE STADIUM

ALTRINCHAM (H) ARCHIVES









Mitre
DIFFERENT LEAGUE



3 STAR COUNTRY
HOUSE HOTEL

WEDDING
VENUE

BAR AND
RESTAURANT

COFFEE
SHOP

THE MALLYAN SPOUT HOTEL, GOATHLAND, WHITBY, YO22 5AN



M
MILLWOOD
HOTELS

For more information on the Fox & Hounds Ainthorpe and the other hotels in the Millwood Hotel Group, please go to:

www.millwoodhotels.uk



THE FOX & HOUNDS
AINTHORPE



TRADITIONAL
COUNTRY INN

BAR AND
RESTAURANT

CAMPING
PODS

HOLIDAY
COTTAGE

THE FOX & HOUNDS, 45 BROOK LANE, AINTHORPE, WHITBY, YO21 2LD



M
MILLWOOD
HOTELS

For more information on the Fox & Hounds Ainthorpe and
the other hotels in the Millwood Hotel Group, please go to:

www.millwoodhotels.uk



WALWORTH
CASTLE

12TH CENTURY CASTLE	–	HOTEL, BAR & RESTAURANT	–	WEDDING VENUE	–	HOLIDAY COTTAGE & LODGE
---------------------------	---	-------------------------------	---	------------------	---	-------------------------------

WALWORTH CASTLE, WALWORTH, DARLINGTON, DL2 2LY



M
MILLWOOD
HOTELS

For more information on the Fox & Hounds Ainthorpe and the other hotels in the Millwood Hotel Group, please go to:

www.millwoodhotels.uk



WALKING FOOTBALL



In terms of competitive matches, September will see the start of a new season of tournament walking football where our men will be competing against other clubs in Hampshire, Dorset and beyond. Our ladies too will be competing in the Hampshire League and beyond.

During the summer our men's teams competed in the WFA National Cup, which we have won 3 times, but this was not to be our year for adding to that.

Our ladies entered for the first time and on finals day the over 40's reached the quarter final before losing to Notts Forest Vets. A creditable performance in their debut season in the competition.

Our ladies have reached the regional round of the FA's national cup and will be the Hampshire representatives in the regional round in Middlesex in October.

In-house, the ladies play on Sunday afternoons at 3pm.

The men play on Monday evenings, 7pm – 8pm and we have 3 more sessions on Thursdays. At 11 our mainly older players (generally 70+) play at 11, followed by 2 'regular' sessions at 12.15 and 1.30. All of these sessions take place on the 3g pitch at the Silverlake and full details, including how to join us, can be found on the website.

We also have a 'Mobility' group, which caters for players with conditions that 'might slow them down', such as Parkinsons, post operative or stroke/heart attack recovery, for example. This lighter session is held at Places Leisure (Fleming Park) on Wednesdays, meeting at 2.15.

So whether you are interested in the competitive side, or just want to kick a ball about and get or keep fit, we have something for everyone.

New season, new venture, why not come and join us. We would be delighted to see you.

Charlie's

AWARD WINNING COFFEE
MOUTH WATERING CAKES
PERFECT PASTERIES
LOADED FRIES
BREAKFAST MUFFINS
TASTY SNACKS
AND MORE...



20%

Charlie's

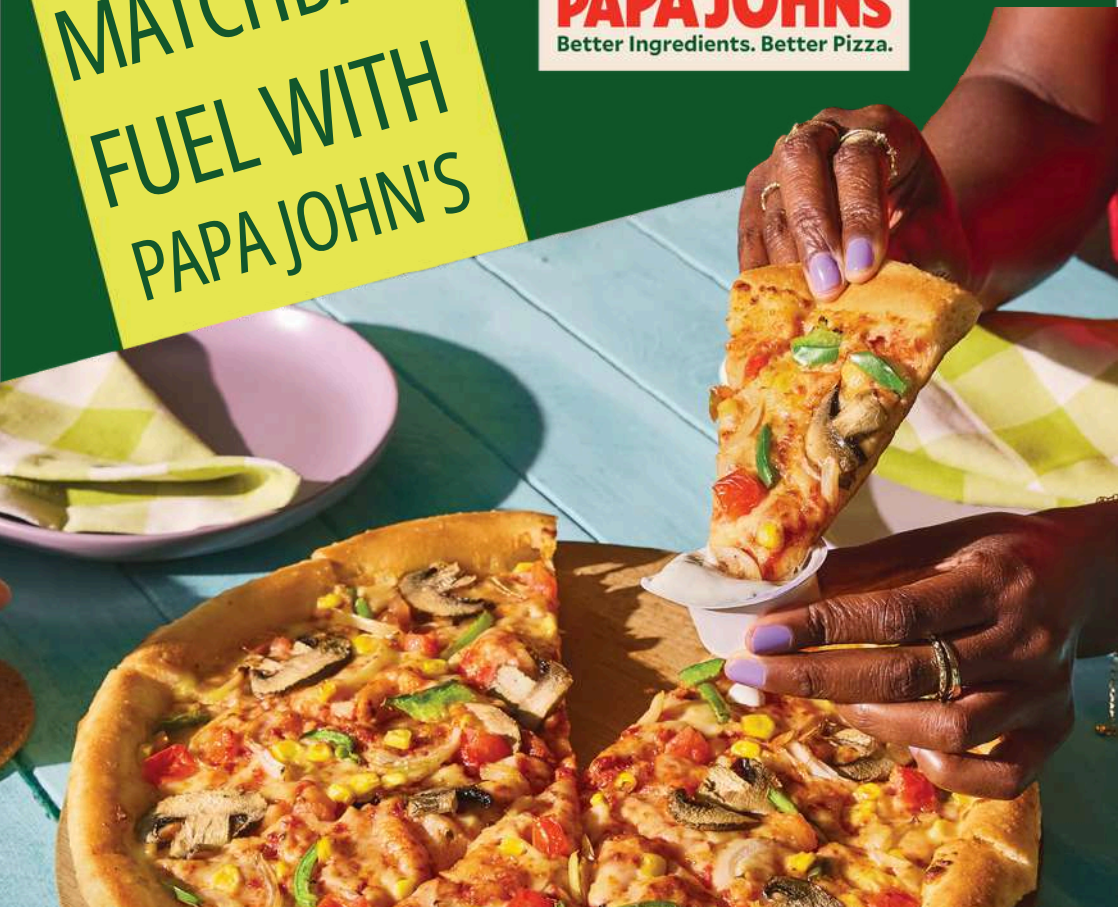
20%

USE THIS COUPON FOR 20% OFF ALL
PURCHASES!

Ganger Farm Way, Romsey SO51 0EE

MATCHDAY
FUEL WITH
PAPA JOHN'S

PAPA JOHN'S
Better Ingredients. Better Pizza.



**ANY LARGE
PIZZA***

£10

USE CODE : PJ10
VALID FOR DELIVERY
& COLLECTION

*Terms apply. Any additional toppings added will be charged at menu price. This offer is not available in conjunction with any other offer. Minimum delivery and delivery charges will apply. Offer can be withdrawn without notice. Only available in Eastleigh store



PAPA JOHN'S EASTLEIGH – 1C HIGH ST, EASTLEIGH, SO50 5LB



023 8065 2222



OPEN: 11AM-1AM MON-THURS, 11AM-3AM FRI-SAT



ORDER AT [PAPAJOHNS.CO.UK](https://papajohns.co.uk) OR VIA OUR APP

SUNDAY CARVERY

Two-course carvery
£17.95 per person

Served 12pm to 4pm
(last sitting at 3pm)





25/26

LEAGUE TABLE

POS		PLD	W	D	L	F	A	+/-	PTS	LAST 6
1	Forest Green Rovers	5	4	1	0	11	3	8	13	●●●●●●
2	Rochdale	5	4	0	1	10	3	7	12	●●●●●●
3	Carlisle United	5	3	2	0	12	4	8	11	●●●●●●
4	Hartlepool United	5	3	2	0	8	1	7	11	●●●●●●
5	Southend United	5	3	2	0	7	1	6	11	●●●●●●
6	Scunthorpe United	4	3	1	0	9	5	4	10	●●●●●●
7	Wealdstone	5	3	0	2	7	5	2	9	●●●●●●
8	Gateshead	5	3	0	2	8	11	-3	9	●●●●●●
9	Brackley Town	4	2	1	1	5	4	1	7	●●●●●●
10	Boreham Wood	4	2	1	1	7	7	0	7	●●●●●●
11	Aldershot Town	5	2	0	3	15	10	5	6	●●●●●●
12	York City	4	1	3	0	5	3	2	6	●●●●●●
13	Altrincham	5	2	0	3	7	8	-1	6	●●●●●●
14	Boston United	4	2	0	2	5	6	-1	6	●●●●●●
15	Eastleigh	5	2	0	3	5	6	-1	6	●●●●●●
16	Braintree Town	5	2	0	3	5	9	-4	6	●●●●●●
17	Tamworth	5	1	1	3	5	7	-2	4	●●●●●●
18	Yeovil Town	5	1	1	3	5	8	-3	4	●●●●●●
19	FC Halifax Town	5	1	1	3	4	8	-4	4	●●●●●●
20	Morecambe	2	1	0	1	2	5	-3	3	●●●●●●
21	Solihull Moors	5	0	3	2	4	10	-6	3	●●●●●●
22	Sutton United	5	0	2	3	4	10	-6	2	●●●●●●
23	Woking	5	0	1	4	3	11	-8	1	●●●●●●
24	Truro City	5	0	0	5	1	9	-8	0	●●●●●●

OTHER ENTERPRISE NATIONAL LEAGUE FIXTURES TODAY

- Solihull Moors vs Southend United
- Braintree Town vs Forest Green Rovers
- FC Halifax Town vs Yeovil Town
- Gateshead vs Aldershot Town
- Hartlepool United vs Boreham Wood
- Morecambe vs Woking
- Sutton United vs Carlisle United
- Truro City vs Boston United
- Wealdstone vs Rochdale
- Brackley Town vs Scunthorpe United

[illegible]

SQUAD LIST AND SPONSORS

1 NICK TOWNSEND



David Bowen Consultancy

2 RICHARD BRINDLEY



H A LASER

3 JAKE VOKINS



Glanville Solicitors

4 LLOYD HUMPHRIES



Neptune Window Cleaning

5 LUIS FERNANDEZ



Accord Accountants

6 TEMI EWEKA



Candidsky

7 KIERON EVANS



Gascare

8 JAKE TAYLOR



Waterfront Restaurant

9 PAUL MCCALLUM



Hampshire PAT Testing

11 AARON BLAIR



Fred & Alex Cole

14 ZAVIER MASSIAH-EDWARDS



Available to sponsor

16 AARON PIERRE



Vision Financial Strategies

17 JOSH LUNDSTRAM



The Badgeman

18 ANGEL WARUIH



The IRO's

21 SONNIE DAVIS



Available to sponsor

SQUAD LIST AND SPONSORS

22 JOSH MCNAMARA



Sandgar LLC

23 LOUIE HOLZMAN



Available to sponsor

24 JORDAN COUSINS



CK Scaffolding

27 ARCHIE HARRIS



RSW Law

30 CONNOR UNDERHILL



WTD Distributions

31 NIALL MAHER



InScapes

34 FREDDIE INGRAM



Available to sponsor

35 COBY KILICK



Available to sponsor

36 ETHAN JONES



Available to sponsor

37 CHASE MICHEL



Available to sponsor

Player sponsorship packages are available at £500 + VAT

Receive a framed signed shirt or signed photo and get your sponsor logo / name on the player profile in the matchday programme and the official club website.

If you are interested in sponsoring a player, please contact
commercial@eastleighfc.com

NEXT UP

UPCOMING FIXTURES



EASTLEIGH VS SCUNTHORPE UNITED

Tuesday 2nd September (KO 7:45pm)
Silverlake Stadium



FC HALIFAX TOWN VS EASTLEIGH

Saturday 13th September (KO 5:30pm)
The Shay Stadium



TAMWORTH VS EASTLEIGH

Saturday 6th September (KO 3pm)
The Lamb Ground



EASTLEIGH VS BRAINTREE TOWN

Saturday 20th September (KO 3pm)
Silverlake Stadium

Get behind the Spitfires!

Home match tickets are now on sale and available to purchase at www.eastleighfc.com/tickets or by scanning the QR code

SCAN ME





EASTLEIGH

Manager: Kelvin Davis



ALTRINCHAM

Manager: Phil Parkinson

	Starting	Substitute	Yellow card	Red card	Goals
1 Nick TOWNSEND (GK)					
2 Richard BRINDLEY					
3 Jake VOKINS					
4 Lloyd HUMPHRIES					
5 Luis FERNANDEZ					
6 Temi EWEKA					
7 Kieron EVANS					
8 Jake TAYLOR (C)					
9 Paul McCALLUM					
11 Aaron BLAIR					
14 Xavier MASSIAH-EDWARDS					
16 Aaron PIERRE					
17 Josh LUNDSTRAM					
18 Angel WARUIH					
21 Sonnie DAVIS					
22 Josh McNAMARA (GK)					
23 Louie HOLZMAN					
24 Jordan COUSINS					
27 Archie HARRIS					
30 Connor UNDERHILL					
31 Niall MAHER					
34 Freddie INGRAM					
35 Coby KILLICK					
36 Ethan JONES					
37 Chase MICHEL					

	Starting	Substitute	Yellow card	Red card	Goals
1 Ethan ROSS (GK)					
2 Lewis BANKS					
3 Sam REED					
4 Lewis BAINES (C)					
5 Jake COOPER					
6 Elliot OSBORNE					
7 Olly CRANKSHAW					
8 Isaac MARRIOTT					
9 James GALE					
10 Keaton WARD					
11 Jimmy KNOWLES					
14 Matthew KOSYLO					
15 Billy SASS-DAVIES					
16 Remi Raymond					
17 Lucas WEAVER					
18 Owen GERMAN					
19 Lucas EDWARDS					
20 Kahrel REDDIN					
22 Tom CRAWFORD					
23 Tyler GOLDEN					
24 Sam BARNES					
25 Joel BAILEY					
27 Louie FALLON (GK)					
30 Luke HUTCHINSON (GK)					
34 Dan SASSI					
40 Charlie KIRK					

MATCH OFFICIALS

Referee: Ross Martin

Assistants: Leigh Crowhurst
& Thomas Holden

Fourth official: Tom Ellsmore



UP NEXT AT THE SILVERLAKE

Eastleigh vs Scunthorpe
Saturday 2nd September (KO 7:45pm)