

THE SPITFIRE



SCUNTHORPE | ENTERPRISE NATIONAL LEAGUE | 02.09.25 | 7:45PM

DIRECTORY



Company name: Eastleigh Football Club Limited
Company number: 05488155
Shareholders/current ownership: SJD Leisure Limited
Stadium: Silverlake Stadium, Stoneham Lane, Eastleigh, Hampshire, SO50 9HT.
Telephone: 02380 613361
Email: admin@eastleighfc.com
Website: www.eastleighfc.com

CLUB HONOURS

Hampshire Intermediate Cup: 1950/51 Hampshire League Division 3: 1950/51, 1953/54 Hampshire League Division 2: 1969/70 Hampshire Midweek Floodlit Cup: 1979/80 Premier Division: 2002/03 Russell Cotes Cup: 2005/06 Hampshire Senior Cup: 2012/13 Conference South: 2013/14 Wessex League Cup Runners Up: 2002/03

BOARD OF DIRECTORS

Chairman: Stewart Donald
Vice Chairman: Thomas Coffey
Directors: Stewart Donald, Thomas Coffey, Mick Geddes, Richard Hill, Allen Prebble & Alex Pike
Associate Directors: Mike Wimbridge, Joseph Higgins, Chas Milner, Gary Tonner, Stuart Solly, Dr Keith D Love, Donald Iro & Paul Lucas

FOOTBALL STAFF

First Team Manager: Kelvin Davis
First Team Assistant Manager: Danny Butterfield
First Team Coach & Head of Scholarship: Jason Bristow
First Team Goalkeeping Coach: Vince Bartram
Club Physio: Sam Scarratt
Club Doctors: Dr Luke Sammut & Dr Greg Warner
First Team Technical Support: Ed Kilby
First Team Analyst: Matt Musgrove
First Team Kit Officer: Tom Crowley
Head Of Grounds: Dan Barnes

CLUB MANAGEMENT

Head of Football Operations: Jamie White
Club Secretary: Ray Murphy
Club Safety Officer: Mick Brown
Head of Media and Communications: Ricky Hart
Community Engagement Officer: Josh Nace

MATCHDAY PROGRAMME

Designer and editor: Matthew Gibbs
Contributors: James Wallace, Ricky Hart, Ed Groves & Ian Ritchie
Photographers: Graham Scambler

The views expressed in this publication are not necessarily those of Eastleigh FC.

IN THIS ISSUE

- 05 Manager's Notes
- 06 2025/26 Home kit
- 08 Captain's Notes
- 09 Hampshire Senior Cup Draw
- 13 2025/26 Away Kit
- 14 Last Time Out
- 18 Through the Lens
- 21 Spitfire in the Spotlight
- 29 Junior Spitfires
- 38 Away Travel
- 42 Scunthorpe
- 51 Walking Football
- 56 Player Stats
- 57 Squad List and Player Sponsors
- 59 Next Up



PRINCIPAL PARTNERS



HERE FOR THE GAME. AND EVERYONE WHO MAKES IT HAPPEN.

With 450 Enterprise branches across the nation, you'll find us close to all 72 clubs in the National League. So we're proud to be here for everyone. From the fans, to the groundskeeper, to Pam who makes the teas.

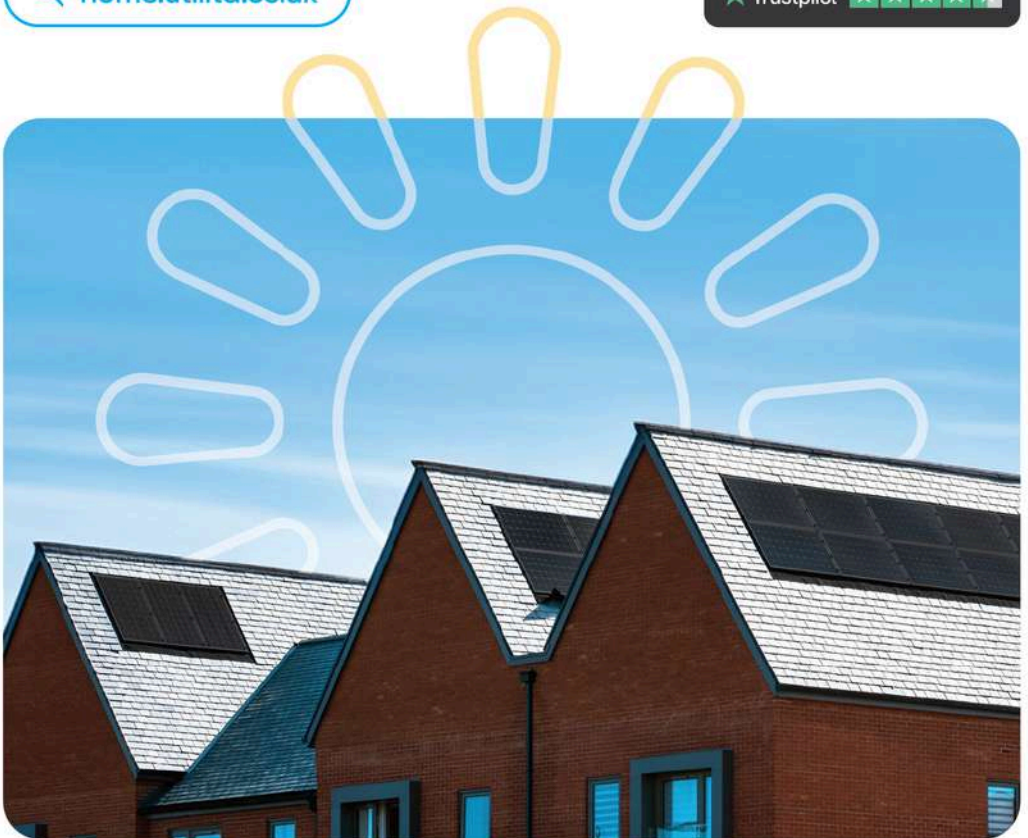


Solar today. Brighter tomorrow.

Get your FREE home survey today.

 home.utilita.co.uk

 Trustpilot 





KELVIN DAVIS

GOOD EVENING, EVERYONE AND WELCOME BACK TO THE SILVERLAKE STADIUM FOR TODAY'S NATIONAL LEAGUE FIXTURE AGAINST SCUNTHORPE!

I would like to start by welcoming the players, backroom staff, and fans of Scunthorpe who have made the trip down from Lincolnshire. Also, as always, I would like to welcome our fans that have come along to the Silverlake Stadium to support us tonight under the lights.

We felt that our first-half performance against Altrincham at the weekend did not really reflect on us as a team, and how we want to play.

To come out in the manner in which we did in the second-half, and to show that kind of spirit and determination and bravery on the ball to turn a 1-0 deficit into a 2-1 win, I'm really pleased. The lads really deserved it, they put so much effort in. We have spoke many times about how we need to put strong performances in at home, and the first-half did not relate to

how we want to be week in, week out, so the second-half was a positive sign, that's for sure.

I think when you play Saturday, Tuesday, you rely a lot on our behaviours and football philosophy. The work that is done in pre-season, you draw on those experiences.

We have learned a few bits from games so far. Scunthorpe will be a very tough test for us, against a team that is flying high in the league. They are running on fumes from last season, and are enjoying life back in the National League.

We need to be ready to compete and match their spirit, and then it's about us showing our determination and game plan. We want to put in a strong performance at home.

We are hoping to see as many of you as possible joining us at the game today!

Thank you all for your continued support!

Kelvin Davis

ON SALE NOW!

HOME KIT / 06

25 HOME
26 KIT





PTS COMPLIANCE

HEALTH & SAFETY SERVICES & TRAINING

We're always looking for great team players!

If you want to be part of our permanent team of fully qualified engineers or account managers, and think you have what it takes to deliver quality work and superior customer service, then get in touch.

POSITIONS AVAILABLE:

- PAT Testers
- Electricians
- Fire Extinguisher Engineers
- Fire Alarm Engineers
- New Business Sales Execs

WHAT WE OFFER:

- Competitive Salary
- 28 days holiday that rises on length of employment
- Company Pension
- Branded van and uniform
- Reward scheme
- Annual company events

To be considered for any of these roles please send your CV to lisa@ptscompliance.co.uk or find out more at www.ptscompliance.co.uk.





WELCOME BACK TO THE SILVERLAKE STADIUM FOR TONIGHT'S NATIONAL LEAGUE FIXTURE AGAINST SCUNTHORPE!

Firstly, I would like to welcome the players, backroom staff, and fans of Scunthorpe that have made the trip down to Eastleigh to visit us today. As always, I would also like to welcome our fans that have come down to the Silverlake Stadium to support us this evening.

We showed great character on Saturday to turn things around and beat Altrincham. We were disappointed to go behind early on, but coming straight out from half-time and turning the game on it's head was great for us. We got both of our goals pretty much straight away after the break, which was the perfect response.

It was great to see Harvey Saunders get himself a goal and an assist on his debut, and it was also really good to see Kieron Evans get his first goal for the club too.

It has been a quick turnaround for us to be back here at the Silverlake this evening, but we are looking forward to having the opportunity to back up the weekend's result with another good one today.

Scunthorpe are a good side, and they have started well, so we need to be aware of their threats.

All of us are looking forward to seeing as many of you as possible down at the Silverlake this evening!

Thank you all for your continued support!

Jake Taylor



TUESDAY 9TH SEPTEMBER 2025 | 7:45PM
SILVERLAKE STADIUM



From the Boardroom to the Pitch. F One Technologies Keeps Your Business Connected.



Business Communications, Simplified.



SMB Reseller
of the Year
Finalist



SMB Reseller
of the Year
Finalist



MSP Reseller
of the Year
Winner



Finance Team
of the Year
Finalist



Best After-Sales
Support
Winner



MSP Project
of the Year
Finalist



MSP Reseller
of the Year
Finalist



MSP Reseller
of the Year
Finalist



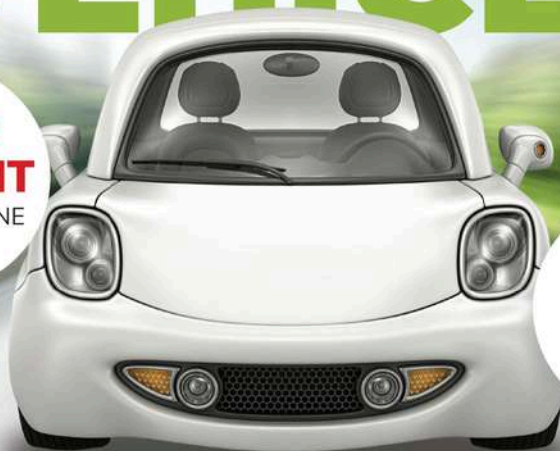
Finance Team
of the Year
Finalist



Best Customer
Service 2024
Finalist

WE BUY ANY VEHICLE

**GET AN
INSTANT**
QUOTE ONLINE



**BEST
PRICE
PAID**

ANY AGE, ANY CONDITION

No hidden charges or fees • 75 years' experience



Get an instant quote



FREE Collection



Quick Payment

Enter your reg now at
silverlake.co.uk



Make a difference with udonateacar.com

Donate as little as £5 from the value of your vehicle when you sell your car to Silverlake via our charity scheme, UDonateacar. Our charity partners, Global's Make Some Noise, will ensure 100% of your donation supports local community charities.



Silverlake: Shaping a Greener Future with Community at its Heart

At Silverlake Automotive Recycling, we take pride in our role within the community. We continuously strive to make a positive impact through charitable work, environmental initiatives, partnerships, and the opportunities we provide for our staff and apprentices.

Over the years, we've built strong relationships with local organisations, supporting over 25 charities and groups this year alone, including Blue Light Trust, British Heart Foundation, Naomi House, Rainbow Trust, Swanmore Fate and Curdridge Reading Rooms play area, positively affecting lives across Hampshire and beyond. Our business is about more than just recycling; it's about making a meaningful difference to every person and company we engage with.

Our community involvement has been deeply rewarding. In 2023, we received multiple accolades at the ATF Professional Vehicle Recycling Awards, including the Community Impact Award, the Recycled Vehicle Parts Supplier Award, and the Salvage Company Award. These honours underscore our dedication to offering top-quality service while promoting eco-friendly practices and charitable initiatives.

This year, we are finalists again in three prestigious categories: Community Impact, Salvage Company of the Year, and Large Vehicle Recycling Company. These nominations highlight our commitment to high service standards and consistent contributions to our community.

Our focus on sustainability and community engagement remains central to our success. This month, we've been nominated as finalists for the Contribution to the Community Award at the Hampshire Business Awards 2024. This recognition reflects the hard work our team puts into supporting local initiatives and addressing community needs. From backing local sports teams to partnering with emergency services, we're committed to making a positive difference where it counts most.

One of our long-standing partnerships is with the Hampshire and Isle of Wight Fire and Rescue Service. For over a decade, we've provided salvage vehicles for essential training exercises, helping firefighters train for road traffic rescues. Last month, we supported the UK Rescue Organisation's Festival of Rescue, supplying over 100 vehicles for teams across the UK to hone life-saving skills. This hands-on training is vital to the safety of all road users, and we're proud to assist.

We also sponsor and partner with Eastleigh FC, where the Silverlake Stadium has become a hub for grassroots development. Earlier this year, we hosted MOTO FEST at Eastleigh, a fundraising event featuring family activities, music, and vehicle displays.

The event drew over five thousand visitors from across Hampshire and raised over £20,000 for local charities.

Our U-Donate-a-Car initiative, now 12 years old, allows donations from as little as £5 to the value of a whole vehicle, with proceeds benefiting local charities. It's a great way to recycle vehicles while contributing to worthy causes. The program is easy to participate in and supports both environmental sustainability and community well-being.

Silverlake's commitment to the community is deeply embedded in our values. We employ over 150 local staff, offering secure jobs where they can achieve their potential. As we look to the future, we have plans to grow both our business and workforce, ensuring we continue to lead by example and build a more sustainable future for everyone in our community.

We are proud to have been part of the Hampshire community for over eighty years and remain dedicated to making our community proud of us. We are committed to continually raising our contribution to the local economy as we grow and move forward.

Explore how Silverlake is shaping a greener tomorrow by visiting our consultation website: silverlakeconsultation.co.uk

ON SALE NOW!

AWAY KIT / 13

25 AWAY
26 KIT



LAST TIME OUT

Saturday 30th August (KO 3pm)
Silverlake Stadium | Attendance: TBC



EASTLEIGH 2



ALTRINCHAM 1

HARVEY SAUNDERS, WHO WAS ANNOUNCED LAST NIGHT AND STARTED THE GAME ON THE BENCH WAS THE DIFFERENCE MAKER FOR KELVIN DAVIS' SUPER SPITFIRES IN THEIR 2-1 VICTORY AT THE SILVERLAKE AGAINST ALTRINCHAM.

The Spitfires launched an early attack when Kieron Evans went down inside the box after feeling contact, but both his and the Eastleigh supporters' appeals were swiftly waved away by referee Ross Martin. The Welshman had combined neatly with a quick one-two down the right before driving into the area, only to be denied a chance to shoot.

On the 20-minute mark, Altrincham enjoyed a spell of sustained possession and began to threaten the Spitfires penalty area. Working the ball cleverly down the right, Keaton Ward pulled it back for Kahrel Reddin, who cut inside and slid a low pass to Isaac Marriott on the edge of the box. His effort stung the gloves of Nick Townsend, but the rebound fell kindly to James Gale, who made no mistake in putting the Robins 1-0 up.



Eastleigh were then forced into an early change when Temi Eweka pulled up injured. Kelvin Davis turned to Sonnie Davis, who slotted in at right-back, with Richard Brindley shifting into the back three.

Just before the interval, Altrincham went agonisingly close again. Gale's header was cleared off the line, and from the resulting corner the ball reached the back post, where the hosts struck the woodwork on the stroke of half-time. The Spitfires held on, but trailed 1-0 at the break.



At the break, Davis introduced new signing Harvey Saunders in place of Massiah-Edwards, and the forward wasted no time making his mark. Bursting down the left with a brilliant turn of pace, Saunders left his marker behind and delivered a pinpoint cross that Kieron Evans finished superbly to bring the Spitfires level.

Just two minutes later, Saunders was at the heart of the action again. This time it was Aaron Blair who did the hard work down the left, whipping in a fine delivery into the box. Saunders met it perfectly with a looping header that sailed over goalkeeper Luke Hutchinson, completing a quick-fire turnaround and putting Eastleigh 2-1 ahead.

With just two minutes to go Altrincham registered their first shot on target of the second half when they broke well down the right hand side but Townsend saved brilliantly, to keep the score at 2-1 to Eastleigh!

Report by Ed Groves



Eastleigh: Townsend (GK), Brindley, Eweka (Davis 38'), Pierre, Holzman, Harris, Cousins (C), Evans, Waruih (Taylor 70'), Massiah-Edwards (Saunders 45'), Blair

Unused Substitutes: McNamara, Stone, Underhill, Ingram

Altrincham: Hutchinson (GK), Banks (C), Reed, Marriott (Osborne 71'), Gale (Kirk 66'), Ward (Weaver 77'), Knowles, Reddin, Crawford, Barnes, Sassi

Unused Substitutes: Baines, Kosylo, Raymond, Fallon



erlake
motive recycling

Sw
RWOOD

ea

uti
life with



rise
NATIONAL
LEAGUE



SM
DEVELOP

utilita
with power



erl
motive

ti
with

WOOD

lake
recyclin

uti
life with

THROUGH THE LENS: ALTRINCHAM (H)







Graham Scambler Photography

Check out some of the top pics from our recent outing through the lens of official Eastleigh FC club photographer Graham Scambler.

For more photographs, check out his website by scanning the QR code for more!



SCAN ME



“

It's a building process
that I want to be a part
of, and that's what
brought me here.

”

NICK TOWNSEND

SPITFIRE IN THE SPOTLIGHT



How've you found your time at Eastleigh so far?

Yeah, it's been great! It has been what I have wanted to be fair, based on the set up and all of the lads that have come in. It's a building process that I want to be a part of, and that's what brought me here.

You joined us after a long stint at Newport County, having played over 200 games for them. Why was now the time for change?

I just felt like it was the right time for me. Obviously after being at Newport for so long, I needed something new. This came up, and it was perfect! I think I wanted to move away and start something new that I could put my name to.

The way the clubs going, and the way that they want to progress made me want to be a part of this journey.

You had the second most saves in the EFL last season, how proud were you of that stat?

Yeah it is. I think that's kind of why I'm in goal. It's something I am proud of, and I want to keep going with it, but obviously I want to get clean sheets as well and all the rest of it. Hopefully I can build on that this season.



You joined Birmingham's academy at a young age, and they were also the club that gave you your first pro deal. How did you find those years?

To be fair I am a Birmingham supporter so it's what I had always wanted from when I was younger. I grew up going to the games, so I was in dream world to be honest.

It gave me a chance in football, and helped me to gain experience. From then on it's just been like a dream really

You've played on the international stage, for Antigua and Barbuda. Not many players get to represent their country, how have you found it?

That's kind of one thing I wish that I had done earlier on in my career. I had to do birth certificates and all the rest of it which took quite a while.

It's a thing that hardly any people get to do. I have been to places around the world that I probably never would've gone to. It's been a different kind of football which I have really enjoyed. I have probably made my family proud by doing it, so it will be something that I will end up looking back on and being proud of.



Have you always been a goalkeeper? Or have you played anywhere else?

Before i joined academy football, I think I played as a striker. I became a goalkeeper because I was geetting annoyed with us conceding, so I kept dropping further and further back on the pitch. So yeah, mainly I have just been a goalkeeper.

**Nick Townsend is sponsored by
David Bowen Consultancy**



Gary Joseph

7th November 1965 - 31st August 2025



It is with great sadness that Eastleigh Football Club have learned of the passing of one of our former players, Gary Joseph over the weekend.

Gary joined Eastleigh in November 1992 from Sholing Sports, making twenty five appearances, and scoring four goals in his spell with the Club.

Gary had a wealth of experience in the local football area including spells with Aerostructures, Worthing, Gosport Borough, Newport IOW, Havant Town, Basingstoke and Bashley.

25 YEARS CHAMPIONING GRASSROOTS

Shout it from the terraces, it's our anniversary! Since 2000, we've been transforming lives, giving every community great places to play sport. We're not finished yet, so here's to more game-changing investment.

Search Football
Foundation
to find out more





MC
KATHRYN VINE

SHERWOODS RESTAURANT

Comedy Night

ENTRY TICKET
£12
DOORS OPEN AT 7:00 PM



DUNCAN ADAM



HEADLINING
NATHAN EAGLE

EASTLEIGH
FOOTBALL CLUB



09

DAY

10

MONTH

25

YEAR

SILVERLAKE STADIUM,
STONEHAM LANE SO50 9HT

WWW.SHERWOODSRESTAURANT.CO.UK

02380 613 361



KATE PENFIELD



TRAVIS
BOOTH-MILLARD



hampshire*pat*testing

and electrical services tailored to suit your needs



0800 8048483

enquiries@hampshirepattesting.co.uk

www.hampshirepattesting.co.uk

JUNIORS PITFIRES

MY MATCHDAY

SCORE

EASTLEIGH _ V _ SCUNTHORPE

GOALSCORERS

EASTLEIGH

SCUNTHORPE

FREE KICKS

EASTLEIGH _

SCUNTHORPE _

CORNERS

EASTLEIGH _

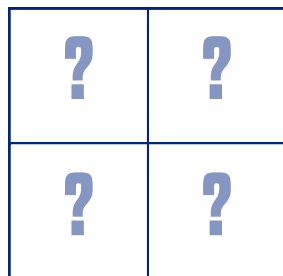
SCUNTHORPE _

ATTENDANCE: _____

MY MAN OF THE MATCH: _____



CAN YOU SOLVE THE JIGSAW PUZZLE?



SPOT THE DIFFERENCE 🔍

[YOU ARE LOOKING FOR FIVE]



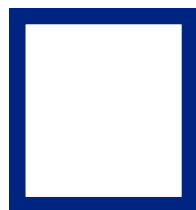
SPITFIRE SUMS



—



=



QUICKFIRE QUIZ



1. What is Scunthorpe's nickname?
2. Where do Scunthorpe play their home games?
3. In which season did the Spitfires last play against Scunthorpe?
4. Who was the Spitfires' last home game against?
5. Which Eastleigh player has the number 8 on the back of their shirt?

**CAN YOU
SPOT
THE BALL?**



JUNIORSPITFIRES

ANSWERS

JIGSAW

3	2
1	4

SPITFIRE SUMS

Saunders (15) - Blair (11) = 4

SPOT THE BALL



3

QUICKFIRE QUIZ

1. The Iron, 2. Attis Arena, 3. 2022/23,
4. Altrincham, 5. Jake Taylor



SPOT THE DIFFERENCE





MATCHDAY FESTIVALS

COMPETE FOR A CHANCE TO PLAY ON THE
SILVERLAKE STADIUM PITCH AT HALF-TIME



£50
entry per
team

THE MATCHDAY FESTIVAL INCLUDES:

- 14 complimentary match tickets
- Additional **half-price match tickets**
- Group stages **kick-off at 12pm** with the final and play-off games on the Silverlake Stadium pitch at half-time
- Every player will be **presented with a medal** after the final whistle

MATCHDAY EXPERIENCES

MASCOT, GUARD OF HONOUR,
& BALL BOY/GIRLS



HOW TO GET INVOLVED:

If you are involved in youth team and would like to sign-up for a future matchday festival, please email **community@eastleighfc.com** to register your interest.

SWIPE



FOR



THE CELEBRATION





FOLLOW
your CLUB
ALL SEASON

Every National League game
Was £129.99 Now **£99.99**

Watch **NLTV** on **DAZN**

Offer ends 31 August 2025

AWAY TRAVEL

In conjunction with the '1946' supporters club, we are thrilled to announce we will be supplying coaches for every game.



Category	Adult	Child (16 & Under)
1946 Member	£20	£10
Non 1946 Member	£30	£15



Any member of the supporters club will be able to watch the Spitfires on the road for a flat rate price for any game.

In order to take advantage of the competitive pricing, please firstly ensure you have completed your membership with the supporters club by emailing 1946clubinfo@gmail.com

We look forward to welcoming as many of you on board across the season!



EASTLEIGH FOOTBALL CLUB BLACK TIE DINNER, JAZZ & CASINO

Friday 3rd October 2025

7pm - 12am | £65pp

(£15pp non refundable deposit)

Ticket includes:

Drink on arrival & Four-course sit down dinner
Jazz singer dinner entertainment in the Brooks Suite &
Nightclub with DJ and casino games* downstairs

*Play free for fun, no cash prizes

To book, please email kcasey@eastleighfc.com or call

02380 613 361

ACADEMY COACHES WANTED!



At Eastleigh FC, we are looking for passionate and enthusiastic individuals to come on board as members of the academy staff.

Each role will include the following responsibilities:

- Planning coaching sessions
- Managing & running coaching sessions
- Managing your specific age group on matchdays during half terms
- To be available for any potential cover sessions.
- Ensure the safety of academy players is paramount. This includes first aid & safeguarding.
- To work closely with parents of players & also coaches across the football club

Roles available:

- Under 15's Academy Lead Coach (£25 per session) Monday's 5:30-7:00pm with fixtures during half terms (£35 per fixture).
- Under 16's Talent ID Lead Coach (£20 per session) Monday's 6-7pm with fixtures during half term.
- Talent ID Goalkeeper coach (£20 per session) Monday 5-6pm & Tuesday 5-6pm.

Desired Attributes Include:

- Previous coaching experience
- Previous experience leading matchdays at academy/grassroots level
- Excellent organisation & time-management skills
- Experience in planning and executing training sessions
- Experience in the delivery of squad warmups
- UEFA C Minimum/UEFA B desired
-

If interested, please email joastler@eastleighfc.com & ahealey@eastleighfc.com before Wednesday 15 October 2025.



PROUDLY SPONSORED BY:

GENIO
ACCOUNTANTS

EASTLEIGH FC GOLF DAY

Friday 17th October 2025

Boundary Lakes Golf Course

The Utilita Bowl, Southampton, SO30 3XH

Including:

Two-course meal | Goody bag | Q&A with VIP guest
Exclusive auction prizes | Raffle Prize table
Chance to win hospitality for four
at Eastleigh FC

Teams of four at **£450**

Hole sponsorship available at **£180**

***All prices inclusive of VAT**

To book, please call **02380 613 361** or
email **alexpik@eastleighfc.com**



Scunthorpe will make a 472 mile round trip to visit the Silverlake Stadium for this evening's league clash.

The Iron play their home games at the Attis Arena, which has housed them since 1988.

Their record attendance came in the National League North play-off final last season, when 9,086 supporters were in the ground to watch the Iron earn promotion back to the National League.

This is now the fifth consecutive season that Scunthorpe have spent outside of the football league.

The Iron spent the 2009/10 and 2010/11 campaigns plying their trade in the Championship. Following this, until they were relegated to the National League in the 2021/22 season, they spent their time either in League One or League Two.

In the 2008/09 season, Scunthorpe finished as runners-up to Luton Town in the EFL Trophy. Over 55,000 spectators watched on as they fell to a heart breaking defeat after extra-time at Wembley Stadium.

Former Spitfire, Danny Whitehall has scored four in his first four games this season for Scunthorpe, and he will be one to watch out for in this evening's game.

PREVIOUS MEETINGS



Saturday 4th March 2023
Enterprise National League
Scunthorpe 0-1 Eastleigh



Tuesday 1st November 2022
Enterprise National League
Eastleigh 2-0 Scunthorpe



The two sides have only ever faced each other twice in the past.

On both occasions, during the 2022/23 National League campaign, the Spitfires came out on top, keeping clean sheets in both games.



THE ROUTE TO **EASTLEIGH**

236
MILES



SCUNTHORPE (H) ARCHIVES







Mitre
DIFFERENT LEAGUE



3 STAR COUNTRY
HOUSE HOTEL

WEDDING
VENUE

BAR AND
RESTAURANT

COFFEE
SHOP

THE MALLYAN SPOUT HOTEL, GOATHLAND, WHITBY, YO22 5AN



M
MILLWOOD
HOTELS

For more information on the Fox & Hounds Ainthorpe and the other hotels in the Millwood Hotel Group, please go to:

www.millwoodhotels.uk



THE FOX & HOUNDS
AINTHORPE



TRADITIONAL
COUNTRY INN

BAR AND
RESTAURANT

CAMPING
PODS

HOLIDAY
COTTAGE

THE FOX & HOUNDS, 45 BROOK LANE, AINTHORPE, WHITBY, YO21 2LD



M
MILLWOOD
HOTELS

For more information on the Fox & Hounds Ainthorpe and
the other hotels in the Millwood Hotel Group, please go to:

www.millwoodhotels.uk



WALWORTH
CASTLE

12TH CENTURY CASTLE – HOTEL, BAR & RESTAURANT – WEDDING VENUE – HOLIDAY COTTAGE & LODGE

WALWORTH CASTLE, WALWORTH, DARLINGTON, DL2 2LY



M
MILLWOOD
HOTELS

For more information on the Fox & Hounds Ainthorpe and the other hotels in the Millwood Hotel Group, please go to:

www.millwoodhotels.uk



WALKING FOOTBALL



The Walking Football section of Eastleigh FC is one of the largest walking football clubs in England and celebrated 10 years of action last year.

Whilst walking football caters for players both male and female who want to prolong their football activities as the years pass, in 2024 the club established a new section to cater for those a bit less able.

We call these our Mobility Walking Football sessions. They are designed for those with conditions such as Parkinsons, MS and other issues and also for those on a recovery path from surgery, heart attacks or stroke, for example.

This is part of a national initiative by the sport's governing body, the Walking Football Association, and a couple of months ago ITV Meridian featured one of our sessions on the 6pm news show.

These sessions are open to anyone with a disability or not fit enough to play in our regular Sunday or Thursday Walking Football sessions.

Some of our existing members have joined the sessions following operations, or in a couple of cases, getting back to fitness after cardiac issues.

Mobility Walking Football is a growing branch of walking football and is starting to develop its' own competitions, including a national cup.

Whilst we are perhaps not quite ready for that, in June of this year we entertained 2 teams from Dorset Parky Striders, a Bournemouth based club, made up 100% of Parkinsons' players. In the autumn, we will be paying them a visit in a return set of matches.

We would be delighted to welcome Eastleigh supporters to our weekly sessions. These take place along the road at Fleming Park (Places Leisure) in Passfield Avenue every Wednesday at 2pm.

Sessions include a warm up, football and a chat afterwards over tea or coffee and biscuits.

So if you, or anyone you know might be interested in taking part, why not come along on a Wednesday, and see if it is for you?

For more information contact ewfcmobility@gmail.com or see our Eastleigh Walking Football Facebook page

Charlie's

AWARD WINNING COFFEE
MOUTH WATERING CAKES
PERFECT PASTERIES
LOADED FRIES
BREAKFAST MUFFINS
TASTY SNACKS
AND MORE...



20%

Charlie's

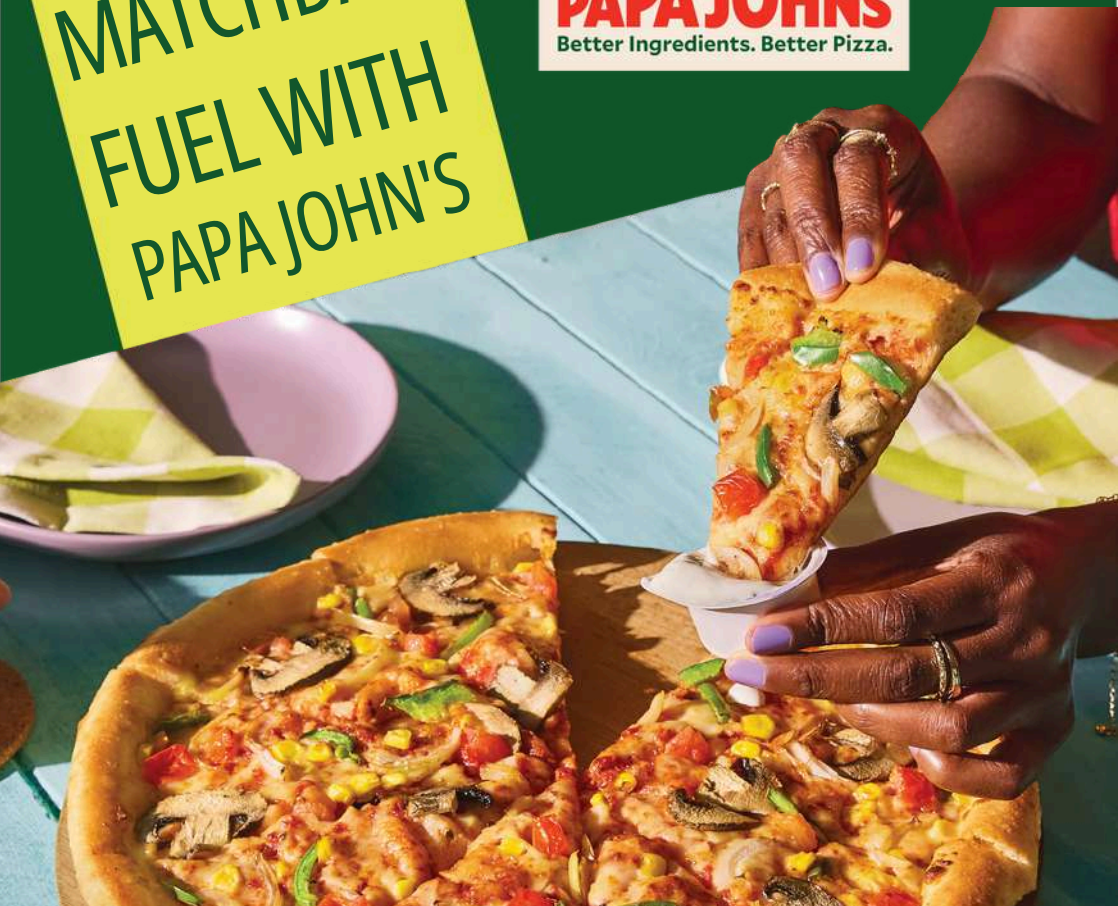
20%

USE THIS COUPON FOR 20% OFF ALL
PURCHASES!

Ganger Farm Way, Romsey SO51 0EE

MATCHDAY
FUEL WITH
PAPA JOHN'S

PAPA JOHN'S
Better Ingredients. Better Pizza.



**ANY LARGE
PIZZA***

£10

USE CODE : PJ10
VALID FOR DELIVERY
& COLLECTION

*Terms apply. Any additional toppings added will be charged at menu price. This offer is not available in conjunction with any other offer. Minimum delivery and delivery charges will apply. Offer can be withdrawn without notice. Only available in Eastleigh store



PAPA JOHN'S EASTLEIGH – 1C HIGH ST, EASTLEIGH, SO50 5LB



023 8065 2222



OPEN: 11AM-1AM MON-THURS, 11AM-3AM FRI-SAT

ORDER AT [PAPAJOHNS.CO.UK](https://papajohns.co.uk) OR VIA OUR APP

SUNDAY CARVERY

Two-course carvery
£19.95 per person

Served 12pm to 4pm
(last sitting at 3pm)





25/26

LEAGUE TABLE

POS		PLD	W	D	L	F	A	+/-	PTS	LAST 6
1	Rochdale	6	5	0	1	13	4	9	15	
2	Forest Green Rovers	6	4	2	0	11	3	8	14	
3	Southend United	6	4	2	0	9	2	7	14	
4	Hartlepool United	6	3	3	0	8	1	7	12	
5	Carlisle United	6	3	2	1	13	6	7	11	
6	Scunthorpe United	5	3	2	0	10	6	4	11	
7	Gateshead	6	3	1	2	11	14	-3	10	
8	Wealdstone	6	3	0	3	8	8	0	9	
9	Eastleigh	6	3	0	3	7	7	0	9	
10	Brackley Town	5	2	2	1	6	5	1	8	
11	Boreham Wood	5	2	2	1	7	7	0	8	
12	Aldershot Town	6	2	1	3	18	13	5	7	
13	FC Halifax Town	6	2	1	3	7	10	-3	7	
14	Braintree Town	6	2	1	3	5	9	-4	7	
15	York City	4	1	3	0	5	3	2	6	
16	Altrincham	6	2	0	4	8	10	-2	6	
17	Boston United	5	2	0	3	5	9	-4	6	
18	Sutton United	6	1	2	3	6	11	-5	5	
19	Tamworth	5	1	1	3	5	7	-2	4	
20	Yeovil Town	6	1	1	4	7	11	-4	4	
21	Woking	6	1	1	4	5	11	-6	4	
22	Truro City	6	1	0	5	4	9	-5	3	
23	Morecambe	3	1	0	2	2	7	-5	3	
24	Solihull Moors	6	0	3	3	5	12	-7	3	

OTHER ENTERPRISE NATIONAL LEAGUE FIXTURES TODAY

- Braintree Town vs Tamworth
- Morecambe vs Forest Green Rovers
- Solihull Moors vs Yeovil Town
- Wealdstone vs Southend United

[illegible]

SQUAD LIST AND SPONSORS

1 NICK TOWNSEND



David Bowen Consultancy

2 RICHARD BRINDLEY



H A LASER

3 JAKE VOKINS



Glanville Solicitors

4 LLOYD HUMPHRIES



Neptune Window Cleaning

5 LUIS FERNANDEZ



Accord Accountants

6 TEMI EWEKA



Candidsky

7 KIERON EVANS



Gascare

8 JAKE TAYLOR



Waterfront Restaurant

9 PAUL MCCALLUM



Hampshire PAT Testing

11 AARON BLAIR



Fred & Alex Cole

14 ZAVIER MASSIAH-EDWARDS



Available to sponsor

15 HARVEY SAUNDERS



Charisma Recruitment

16 AARON PIERRE



Vision Financial Strategies

17 JOSH LUNDSTRAM



The Badgeman

18 ANGEL WARUIH



The IRO's

SQUAD LIST AND SPONSORS

21

SONNIE DAVIS



Available to sponsor

22

JOSH MCNAMARA



Sandgar LLC

23

LOUIE HOLZMAN



Available to sponsor

24

JORDAN COUSINS



CK Scaffolding

27

ARCHIE HARRIS



RSW Law

30

CONNOR UNDERHILL



WTD Distributions

31

NIALL MAHER



InScapes

34

FREDDIE INGRAM



Available to sponsor

35

COBY KILICK



Available to sponsor

36

ETHAN JONES



Available to sponsor

37

CHASE MICHEL



Available to sponsor

Player sponsorship packages are available at £500 + VAT

Receive a framed signed shirt or signed photo and get your sponsor logo / name on the player profile in the matchday programme and the official club website.

If you are interested in sponsoring a player, please contact
commercial@eastleighfc.com

NEXT UP IN THE LEAGUE

UPCOMING FIXTURES



TAMWORTH VS EASTLEIGH

Saturday 6th September (KO 3pm)
The Lamb Ground



EASTLEIGH VS BRAINTREE TOWN

Saturday 20th September (KO 3pm)
Silverlake Stadium



FC HALIFAX TOWN VS EASTLEIGH

Saturday 13th September (KO 5:30pm)
The Shay Stadium



EASTLEIGH VS SOUTHEND UNITED

Wednesday 24th September (KO 7:45pm)
Silverlake Stadium

Get behind the Spitfires!

Home match tickets are now on sale and
available to purchase at
www.eastleighfc.com/tickets
or by scanning the QR code

SCAN ME





EASTLEIGH

Manager: Kelvin Davis

	Starting	Substitute	Yellow card	Red card	Goals
1 Nick TOWNSEND (GK)					
2 Richard BRINDLEY					
3 Jake VOKINS					
4 Lloyd HUMPHRIES					
5 Luis FERNANDEZ					
6 Temi EWEKA					
7 Kieron EVANS					
8 Jake TAYLOR (C)					
9 Paul McCALLUM					
11 Aaron BLAIR					
14 Xavier MASSIAH-EDWARDS					
15 Harvey SAUNDERS					
16 Aaron PIERRE					
17 Josh LUNDSTRAM					
18 Angel WARUIH					
21 Sonnie DAVIS					
22 Josh McNAMARA (GK)					
23 Louie HOLZMAN					
24 Jordan COUSINS					
27 Archie HARRIS					
30 Connor UNDERHILL					
31 Niall MAHER					
34 Freddie INGRAM					
35 Coby KILLICK					
36 Ethan JONES					
37 Chase MICHEL					



SCUNTHORPE UNITED

Manager: Andy Butler

	Starting	Substitute	Yellow card	Red card	Goals
1 Maison CAMPBELL (GK)					
2 Oli ROSE					
3 Branden HORTON					
4 Jean BENEHOUAN					
5 Will EVANS					
6 Andrew BOYCE (C)					
7 Declan HOWE					
8 Alfie BEESTIN					
9 Danny WHITEHALL					
10 Callum ROBERTS					
11 Joe ROWLEY					
14 Carlton UBAEZUONU					
15 Dubem EZE					
17 Oli EWING					
18 Max BROGAN					
19 Mark BECK					
20 Kian SCALES					
21 Joe STARBUCK					
22 Joey DAWSON					
23 Billy CHADWICK					
31 Rory WATSON					
33 Tyler DENTON					
44 Ross BARROWS					

MATCH OFFICIALS

Referee: Harry Wager

Assistants: Stuart Kane
& Shaun Farrer

Fourth official: Samuel Read



UP NEXT AT THE SILVERLAKE

Eastleigh vs AFC Totton

Tuesday 9th September (KO 7:45pm)

