

THE SPIRITFIRE



SOUTHEND UNITED | ENTERPRISE NATIONAL LEAGUE | 24.09.25 | 7:45PM

DIRECTORY



Company name: Eastleigh Football Club Limited
Company number: 05488155
Shareholders/current ownership: SJD Leisure Limited
Stadium: Silverlake Stadium, Stoneham Lane, Eastleigh, Hampshire, SO50 9HT.
Telephone: 02380 613361
Email: admin@eastleighfc.com
Website: www.eastleighfc.com

CLUB HONOURS

Hampshire Intermediate Cup: 1950/51 Hampshire League Division 3: 1950/51, 1953/54 Hampshire League Division 2: 1969/70 Hampshire Midweek Floodlit Cup: 1979/80 Premier Division: 2002/03 Russell Cotes Cup: 2005/06 Hampshire Senior Cup: 2012/13 Conference South: 2013/14 Wessex League Cup Runners Up: 2002/03

BOARD OF DIRECTORS

Chairman: Stewart Donald
Vice Chairman: Thomas Coffey
Directors: Stewart Donald, Thomas Coffey, Mick Geddes, Richard Hill, Allen Prebble & Alex Pike
Associate Directors: Mike Wimbridge, Joseph Higgins, Chas Milner, Gary Tonner, Stuart Solly, Dr Keith D Love, Donald Iro & Paul Lucas

FOOTBALL STAFF

First Team Coach & Head of Scholarship: Jason Bristow
First Team Goalkeeping Coach: Vince Bartram
Club Physio: Sam Scarratt
Club Doctors: Dr Luke Sammut & Dr Greg Warner
First Team Technical Support: Ed Kilby
First Team Analyst: Matt Musgrove
First Team Kit Officer: Tom Crowley
Head Of Grounds: Dan Barnes

CLUB MANAGEMENT

Head of Football Operations: Jamie White
Club Secretary: Ray Murphy
Club Safety Officer: Mick Brown
Head of Media and Communications: Ricky Hart
Community Engagement Officer: Josh Nace

MATCHDAY PROGRAMME

Designer and editor: Matthew Gibbs
Contributors: James Wallace, Ricky Hart, Ed Groves & Ian Ritchie
Photographers: Graham Scambler

The views expressed in this publication are not necessarily those of Eastleigh FC.

IN THIS ISSUE

- 05 Jason Bristow
- 06 2025/26 Home kit
- 08 Captain's Notes
- 12 2025/26 Away Kit
- 13 Last Time Out
- 17 Through the Lens
- 20 Spitfire in the Spotlight
- 28 Junior Spitfires
- 38 Away Travel
- 41 Southend
- 47 Guest speakers
- 51 Walking Football
- 56 Player Stats
- 57 Squad List and Player Sponsors
- 59 Next Up



PRINCIPAL PARTNERS



HERE FOR THE GAME. AND EVERYONE WHO MAKES IT HAPPEN.

With 450 Enterprise branches across the nation, you'll find us close to all 72 clubs in the National League. So we're proud to be here for everyone. From the fans, to the groundskeeper, to Pam who makes the teas.

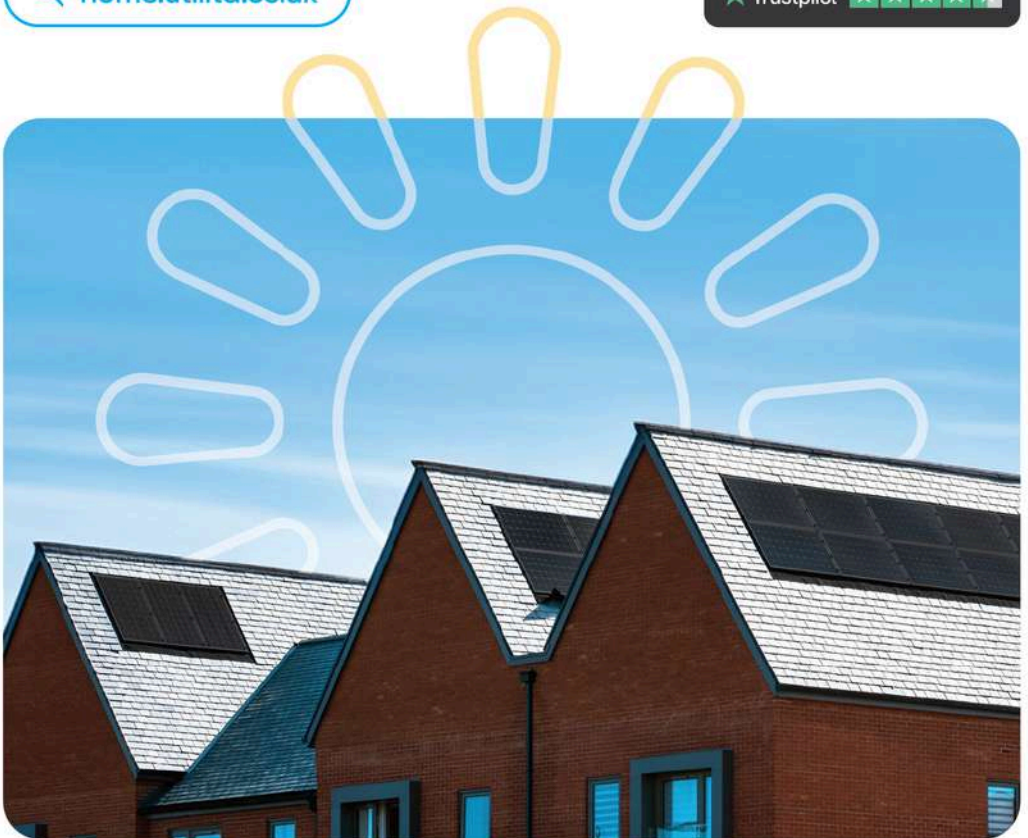


Solar today. Brighter tomorrow.

Get your FREE home survey today.

 home.utilita.co.uk

 Trustpilot 





JASON BRISTOW

GOOD EVENING, EVERYONE AND WELCOME BACK TO THE SILVERLAKE STADIUM FOR TONIGHT'S NATIONAL LEAGUE FIXTURE AGAINST SOUTHEND UNITED!

I would like to start by welcoming the players, backroom staff, and fans of Southend United who have made the trip down from Essex. Also, as always, I would like to welcome our fans that have come along to the Silverlake Stadium to support us tonight.

It hasn't been the easiest of weeks for us, and I would like to thank Kelvin and Danny. I really enjoyed working with them during their time.

Training has been good and now we're looking to push on and get ourselves back in form tonight.

It's been a productive couple of days in the build-up to tonight's game against a very strong outfit, and we're expecting them to be a tough test for us but we feel ready.

The players have responded well during the sessions in the week and we'll be looking to bounce back from Saturday's defeat.

It's always a special atmosphere when you play games under the lights and tonight will be no different.

Kevin Maher is a fantastic manager, who has been with Southend for a long time. We have no doubt that he will set up his team well tonight.

Being at home is an advantage for us. We have earned the majority of our points this season at home, and we want to make sure that we can start to put together a really solid run of form both at the Silverlake and on the road.

I have no doubt that our supporters will show up and get behind the players tonight. Creating a good atmosphere always helps the team out, and we are looking forward to seeing all of you!

Thank you all for your continued support and I'm looking forward to seeing you all again this evening!

Jason Bristow

ON SALE NOW!

HOME KIT / 06

25 HOME
26 KIT





PTS COMPLIANCE
HEALTH & SAFETY SERVICES & TRAINING

We're always looking for great team players!

If you want to be part of our permanent team of fully qualified engineers or account managers, and think you have what it takes to deliver quality work and superior customer service, then get in touch.

POSITIONS AVAILABLE:

- PAT Testers
- Electricians
- Fire Extinguisher Engineers
- Fire Alarm Engineers
- New Business Sales Execs

WHAT WE OFFER:

- Competitive Salary
- 28 days holiday that rises on length of employment
- Company Pension
- Branded van and uniform
- Reward scheme
- Annual company events

To be considered for any of these roles please send your CV to lisa@ptscompliance.co.uk or find out more at www.ptscompliance.co.uk.





JAKE TAYLOR

WELCOME BACK TO THE SILVERLAKE STADIUM FOR TONIGHT'S NATIONAL LEAGUE FIXTURE AGAINST SOUTHEND UNITED!

Before we get started, I would like to welcome the players, backroom staff, and fans of Southend who have made the trip down to Eastleigh to visit us this evening. As always, I would also like to give a warm welcome to our fans who have come along to the Silverlake Stadium to support us.

It's obviously been a difficult week for us. Unfortunately, these things happen in football. It is important that we all stick together now and make sure that our results and performances improve. I would like to thank both Kelvin Davis and Danny Butterfield for their efforts, and I wish them the best in the future.

We've always had really tough games against Southend. They are a team who are always at the top end of the league. They score lots of goals, and they play really aggressive football. It will be a really tough test for us, for sure. Obviously, we will look to try and impose ourselves on the game as much as possible.

Southend lost out in the play-offs last year after a successful season, and they will be looking to go one step further this season.

Hopefully we can have as many of our supporters down here as possible coming to watch us so that we can create a really good atmosphere at the Silverlake!

Thank you all for your continued support!

Jake Taylor

From the Boardroom to the Pitch.

F One Technologies Keeps Your Business Connected.



Business Communications, Simplified.



SMB Reseller
of the Year
Finalist



SMB Reseller
of the Year
Finalist



MSP Reseller
of the Year
Winner



Finance Team
of the Year
Finalist



Best After-Sales
Support
Winner



MSP Project
of the Year
Finalist



MSP Reseller
of the Year
Finalist



MSP Reseller
of the Year
Finalist



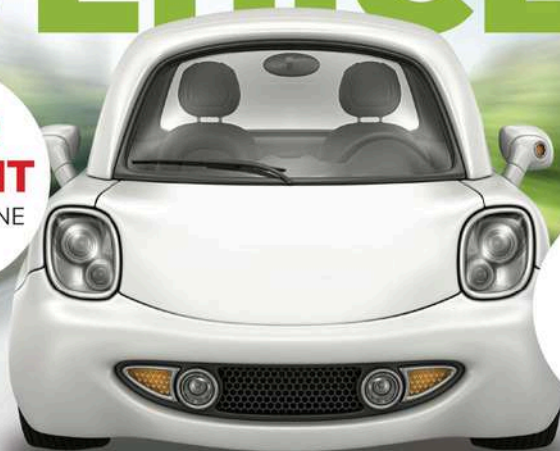
Finance Team
of the Year
Finalist



Best Customer
Support 2024
Finalist

WE BUY ANY VEHICLE

**GET AN
INSTANT**
QUOTE ONLINE



**BEST
PRICE
PAID**

ANY AGE, ANY CONDITION

No hidden charges or fees • 75 years' experience



Get an instant quote



FREE Collection



Quick Payment

Enter your reg now at
silverlake.co.uk



Make a difference with udonateacar.com

Donate as little as £5 from the value of your vehicle when you sell your car to Silverlake via our charity scheme, UDonateacar. Our charity partners, Global's Make Some Noise, will ensure 100% of your donation supports local community charities.



Silverlake: Shaping a Greener Future with Community at its Heart

At Silverlake Automotive Recycling, we take pride in our role within the community. We continuously strive to make a positive impact through charitable work, environmental initiatives, partnerships, and the opportunities we provide for our staff and apprentices.

Over the years, we've built strong relationships with local organisations, supporting over 25 charities and groups this year alone, including Blue Light Trust, British Heart Foundation, Naomi House, Rainbow Trust, Swanmore Fate and Curdridge Reading Rooms play area, positively affecting lives across Hampshire and beyond. Our business is about more than just recycling; it's about making a meaningful difference to every person and company we engage with.

Our community involvement has been deeply rewarding. In 2023, we received multiple accolades at the ATF Professional Vehicle Recycling Awards, including the Community Impact Award, the Recycled Vehicle Parts Supplier Award, and the Salvage Company Award. These honours underscore our dedication to offering top-quality service while promoting eco-friendly practices and charitable initiatives.

This year, we are finalists again in three prestigious categories: Community Impact, Salvage Company of the Year, and Large Vehicle Recycling Company. These nominations highlight our commitment to high service standards and consistent contributions to our community.

Our focus on sustainability and community engagement remains central to our success. This month, we've been nominated as finalists for the Contribution to the Community Award at the Hampshire Business Awards 2024. This recognition reflects the hard work our team puts into supporting local initiatives and addressing community needs. From backing local sports teams to partnering with emergency services, we're committed to making a positive difference where it counts most.

One of our long-standing partnerships is with the Hampshire and Isle of Wight Fire and Rescue Service. For over a decade, we've provided salvage vehicles for essential training exercises, helping firefighters train for road traffic rescues. Last month, we supported the UK Rescue Organisation's Festival of Rescue, supplying over 100 vehicles for teams across the UK to hone life-saving skills. This hands-on training is vital to the safety of all road users, and we're proud to assist.

We also sponsor and partner with Eastleigh FC, where the Silverlake Stadium has become a hub for grassroots development. Earlier this year, we hosted MOTO FEST at Eastleigh, a fundraising event featuring family activities, music, and vehicle displays.

The event drew over five thousand visitors from across Hampshire and raised over £20,000 for local charities.

Our U-Donate-a-Car initiative, now 12 years old, allows donations from as little as £5 to the value of a whole vehicle, with proceeds benefiting local charities. It's a great way to recycle vehicles while contributing to worthy causes. The program is easy to participate in and supports both environmental sustainability and community well-being.

Silverlake's commitment to the community is deeply embedded in our values. We employ over 150 local staff, offering secure jobs where they can achieve their potential. As we look to the future, we have plans to grow both our business and workforce, ensuring we continue to lead by example and build a more sustainable future for everyone in our community.

We are proud to have been part of the Hampshire community for over eighty years and remain dedicated to making our community proud of us. We are committed to continually raising our contribution to the local economy as we grow and move forward.

Explore how Silverlake is shaping a greener tomorrow by visiting our consultation website: silverlakeconsultation.co.uk

ON SALE NOW!

AWAY KIT / 12

25 AWAY
26 KIT



LAST TIME OUT

Saturday 20th September (KO 3pm)
Silverlake Stadium | Attendance: 2,132



EASTLEIGH 1



BRAINTREE 3

AARON BLAIR'S STUNNING VOLLEY AGAINST HIS FORMER SIDE WASN'T ENOUGH FOR EASTLEIGH AS THEY FELL TO A 3-1 LOSS AGAINST BRAINTREE TOWN.

Eight minutes in, Braintree Town gave Eastleigh an early scare when Chay Cooper received the ball from a cleared Eastleigh corner and led a wandering counter-attack which he put just wide. The first ten minutes allowed both sides a couple of opportunities to go ahead.

After the Iron's early chance, they maintained possession and put pressure on Eastleigh's defence.

Archie Harris made things awkward for Mason Terry in between the sticks after 19 minutes when his deflected cross off of Manny Omoro saw itself land just in front of the far post which was swiftly cleared away.



Just three minutes later, the Spitfires took flight when Sonnie Davis delivered a whipped cross across the Braintree penalty area which Aaron Blair hit with a magnificent volley into the bottom left corner, putting Eastleigh ahead against his former side.

Braintree levelled it up five minutes later when Chay Cooper played a low corner to the edge of the box which Terrell Works lashed first time into the top corner; Nick Townsend got fingertips to the ball, but it was too powerful to keep out.

Despite a slow start from Eastleigh, they grew into the game, which saw the first half end level.



Braintree capitalised on Eastleigh's exposed defence in the last moments of the game by placing a long ball towards Tommy Blackwell down the right-hand side, who cut in and finished the game in the 100th minute to make it 3-1.

Report by Ed Groves

The Iron took the lead through Tommy Blackwell in the 78th minute. The substitute was forced wide and squeezed it along the ground underneath Townsend who couldn't get down quickly enough to save it.

The Spitfires proceeded to play with vigour as they hunted for a late equaliser in the five remaining minutes of regular time. A ball over the top of Braintree's defence was met by Harvey Saunders who attempted to head the ball over Terry in goal, but was unsuccessful as the goalkeeper got a strong hand to push the ball out for a corner.





THROUGH THE LENS: BRAINTREE TOWN (H)







Graham Scambler Photography

Check out some of the top pics from our recent outing through the lens of official Eastleigh FC club photographer Graham Scambler.

For more photographs, check out his website by scanning the QR code for more!



“

**There is not a lot of clubs
that I would rather have
come back into this
level with!**

”

**LUIS
FERNANDEZ**

SPITFIRE IN THE SPOTLIGHT



enterpris

You bagged your first goal in Eastleigh colours recently, how good was that feeling when the ball hit the back of the net?

Yeah, I was buzzing to finally get a goal for Eastleigh. It took a bit longer than I would've liked, but I was just buzzing to finally get that first one. Hopefully now there will be more to follow.

I knew that I needed to start adding that to my game for the team. Now I've got my first one, it's given me the confidence to hopefully now every time we get a set-piece I will get the feeling that I have a good chance of scoring.

You joined us following a couple of years at Hampton & Richmond. How've you found things playing back up in the National League?

I have loved every minute of it to be fair! There is not a lot of clubs that I would rather have come back into this level with, because it's a really welcoming club. It is a close knit community club. I think I have slowly but steadily got up to the level, I was off to a bit of a slow start but I now really feel like I have found my feet. I am ready to kick on.



You are quite the leader on the pitch. Is that something you've always prided yourself on?

I would say that I have always seen myself as a bit of a leader on the pitch, even from young. Especially now that it's my second season here now, I've had a year with the club and I know how things are done. I had a period at the start where I needed to improve, but now I feel fully comfortable and I want to try and lead by example.

What would you say your favourite thing about playing football at Eastleigh is?

Firstly, it's just a blessing to be able to play full-time football. Obviously, after I was let go by Stevenage, I found myself playing part-time and I needed to have another job alongside playing. That side of things really makes you value football as a full-time job.

I like the togetherness of the club. I provide myself on community work, and I really like how close knit it is. You get to build really good relationships around the club and with the fans. It really helps on the pitch to know you've got the full support of people from around the club.



What was your job that you did around playing part-time football?

I was doing Amazon delivery driving. I always knew the goal for me was to get back to full-time football, so in my head it was always a temporary thing. I worked hard for it to not be a long term thing, but I do think it was really good life experience for me, and it made me connect with the real world a bit more, because football can sometimes feel like you are in a bit of a bubble.

You are the community ambassador for Eastleigh Football Club. How've you been finding that role, and why did you put yourself forward for it?

It was because I get a real fulfilment out of doing stuff for the community, and it has always been a part of my nature. I have always been one to help others, and to give back. I will always take the chance to do whatever I can to help others.



What is your first footballing memory?

I think I was seven years old, and I was playing two years up in Sunday league. I was always on the bench and we used to lose all the time. I would sit on the bench and come on for like the last five minutes. One of those days, I scored a free-kick in the last minute, and because I was so young, everyone was so happy for me. That was my first goal in Sunday league.

Have you kept close with many people from any of your former clubs?

A lot of my closest friends all still play, but they are a couple of divisions below, so they are part-time.

I have a good friend who is still playing in the football league, Nick Tsaroulla, who is playing for Notts County. He is probably doing the best of out my closest friends. I would say him and Danilo Orsi, who plays at Wimbledon are two people know that I do my best to keep up with how they are getting on.

Looking ahead, what are some of your goals that you want to achieve between now and the end of the season?

I would like to make sure I don't pick up any injuries, I have had some slight knocks which have meant I have needed to miss a game here and there. The main thing is just getting results really. We need to come together as a team and get ourselves back up that table. We are all pushing for the same thing here.



**Luis Fernandez is sponsored by
Accord Accountants**



25 YEARS CHAMPIONING GRASSROOTS

Shout it from the terraces, it's our anniversary! Since 2000, we've been transforming lives, giving every community great places to play sport. We're not finished yet, so here's to more game-changing investment.

Search Football
Foundation
to find out more



REARRANGED FIXTURE



Eastleigh vs Scunthorpe United
Tuesday 21st October | 7:45pm
Silverlake Stadium





MC
KATHRYN VINE

SHERWOODS RESTAURANT

Comedy Night

ENTRY TICKET
£12
DOORS OPEN AT 7:00 PM



DUNCAN ADAM



HEADLINING
NATHAN EAGLE

EASTLEIGH
FOOTBALL CLUB



09

DAY

10

MONTH

25

YEAR

SILVERLAKE STADIUM,
STONEHAM LANE SO50 9HT

WWW.SHERWOODSRESTAURANT.CO.UK

02380 613 361



KATE PENFIELD



TRAVIS
BOOTH-MILLARD



hampshire*pat*testing

and electrical services tailored to suit your needs



0800 8048483

enquiries@hampshirepattesting.co.uk

www.hampshirepattesting.co.uk

JUNIORS PITFIRES

MY MATCHDAY

SCORE

EASTLEIGH _ V _ SOUTHEND

GOALSCORERS

EASTLEIGH

SOUTHEND

FREE KICKS

EASTLEIGH _

SOUTHEND _

CORNERS

EASTLEIGH _

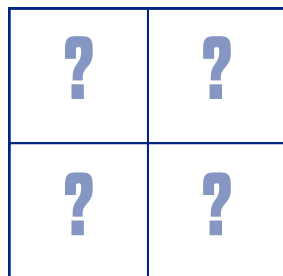
SOUTHEND _

ATTENDANCE: _____

MY MAN OF THE MATCH: _____



CAN YOU SOLVE THE JIGSAW PUZZLE?



SPOT THE DIFFERENCE 🔍

[YOU ARE LOOKING FOR FIVE]



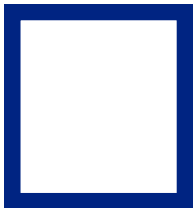
SPITFIRE SUMS



—



=



QUICKFIRE QUIZ



1. What is Southend's nickname?
2. Where do Southend play their home games?
3. Which former Spitfire now wears the 17 shirt for Southend?
4. Who scored for the Spitfires in our last home game?
5. Which Eastleigh player has the number 4 on the back of their shirt?

**CAN YOU
SPOT
THE BALL?**



JUNIORSPITFIRES

ANSWERS

SPOT THE DIFFERENCE



QUICKFIRE QUIZ

1. The Shrimpers, 2. Roots Hall, 3. Cav Miley, 4. Aaron Blair, 5. Lloyd Humphries



JIGSAW

2	4
1	3

SPITFIRE SUMS

Lundstram (17) - Brindley (2) = 15

SPOT THE BALL

1





MATCHDAY FESTIVALS

COMPETE FOR A CHANCE TO PLAY ON THE
SILVERLAKE STADIUM PITCH AT HALF-TIME



£50
entry per
team

THE MATCHDAY FESTIVAL INCLUDES:

- 14 complimentary match tickets
- Additional **half-price match tickets**
- Group stages **kick-off at 12pm** with the final and play-off games on the Silverlake Stadium pitch at half-time
- Every player will be **presented with a medal** after the final whistle

MATCHDAY EXPERIENCES

MASCOT, GUARD OF HONOUR,
& BALL BOY/GIRLS



HOW TO GET INVOLVED:

If you are involved in youth team and would like to sign-up for a future matchday festival, please email **community@eastleighfc.com** to register your interest.

™ DYNO-ROD

Plumbing & Drains Services

Which?
Trusted Trader



★ Trustpilot

- ✓ No Call-Out Charge
- ✓ Fixed Price Quote
- ✓ Local Engineers
- ✓ Guaranteed Work*
*Subject to T&C's
- ✓ Domestic and Commercial Services



*From blocked drains to burst pipes, we're here to help. We're proud to offer **24/7/365** emergency response across the UK. No matter the problem, you can count on Dyno-Rod to get your home or business flowing again.*



Visit dyno.com

Or call us on



0333 305 8390



DYNO-ROD
Plumbing & Drains Services

OFFICIAL PARTNERS OF THE
NATIONAL LEAGUE

SWIPE



FOR



THE CELEBRATION





FOLLOW
your CLUB
ALL SEASON

Every National League game
Was £129.99 Now **£99.99**

Watch **NLTV** on **DAZN**

Offer ends 31 August 2025

AWAY TRAVEL

In conjunction with the ‘1946’ supporters club, we are thrilled to announce we will be supplying coaches for every game.



Category	Adult	Child (16 & Under)
1946 Member	£20	£10
Non 1946 Member	£30	£15

COMING UP THIS MONTH:

Sat 27th Sept	11:30	Wealdstone
Tues 30th Sept	13:30	Truro City



Any member of the supporters club will be able to watch the Spitfires on the road for a flat rate price for any game.

In order to take advantage of the competitive pricing, please firstly ensure you have completed your membership with the supporters club by emailing 1946clubinfo@gmail.com

We look forward to welcoming as many of you on board across the season!

ACADEMY COACHES WANTED!



At Eastleigh FC, we are looking for passionate and enthusiastic individuals to come on board as members of the academy staff.

Each role will include the following responsibilities:

- Planning coaching sessions
- Managing & running coaching sessions
- Managing your specific age group on matchdays during half terms
- To be available for any potential cover sessions.
- Ensure the safety of academy players is paramount. This includes first aid & safeguarding.
- To work closely with parents of players & also coaches across the football club

Roles available:

- Under 15's Academy Lead Coach (£25 per session) Monday's 5:30-7:00pm with fixtures during half terms (£35 per fixture).
- Under 16's Talent ID Lead Coach (£20 per session) Monday's 6-7pm with fixtures during half term.
- Talent ID Goalkeeper coach (£20 per session) Monday 5-6pm & Tuesday 5-6pm.

Desired Attributes Include:

- Previous coaching experience
- Previous experience leading matchdays at academy/grassroots level
- Excellent organisation & time-management skills
- Experience in planning and executing training sessions
- Experience in the delivery of squad warmups
- UEFA C Minimum/UEFA B desired
-

If interested, please email joastler@eastleighfc.com & ahealey@eastleighfc.com before Wednesday 15 October 2025.



PROUDLY SPONSORED BY:



EASTLEIGH FC GOLF DAY

Friday 17th October 2025

Boundary Lakes Golf Course

The Utilita Bowl, Southampton, SO30 3XH

Including:

Two-course meal | Goody bag | Q&A with Ex-England
& Everton Striker James Beattie | Exclusive auction
prizes | Raffle Prize table

Chance to win hospitality for four
at Eastleigh FC

Teams of four at **£450**

Hole sponsorship available at **£180**

***All prices inclusive of VAT**

To book, please call **02380 613 361** or
email **alexpike@eastleighfc.com**



Southend will make a 258 mile round trip to visit the Silverlake Stadium for this evening's league clash.

Since they were founded in 1906, Southend United have called four different grounds their home. They started out playing at The Kursaal, before temporarily moving to New Writtle Street.

Their second permanent home was Greyhound Park. The Shrimpers played their football there between 1934-1955.

This year marks 70 years of Southend United playing their home games at Roots Hall. It is the largest stadium in Essex, and has a maximum capacity of 12,392. However, at the moment their capacity is restricted to 10,508.

The Essex side earned promotion to the Championship in the 2005/06 season, after finishing 1st in League One. They would only spend one year in the Championship, as they finished in 22nd, following their title winning season.

This is now Southend's fifth consecutive season that they have spent playing their football in the National League. They narrowly missed out on promotion last season, after falling just short to Oldham Athletic in what was a thrilling play-off final at Wembley Stadium.

Former Spitfire, Cav Miley will return to the Silverlake this evening with Southend. During his time in SO50, he made just shy of 200 appearances.

PREVIOUS MEETINGS



Saturday 22nd March 2025
Enterprise National League
Eastleigh 1-2 Southend



Saturday 12th October 2024
Emirates FA Cup
Eastleigh 0-1 Southend



Tuesday 10th September 2024
Enterprise National League
Southend 2-0 Eastleigh



Saturday 13th January 2024
Enterprise National League
Eastleigh 0-1 Southend



Friday 25th August 2023
Enterprise National League
Southend 2-0 Eastleigh



THE ROUTE TO **EASTLEIGH**

129
MILES



SILVERLAKE STADIUM



ROOTS HALL

SOUTHEND (H) ARCHIVES







Mitre
DIFFERENT LEAGUE

THIS WEEKS *guest speakers*



JAMES CONSTABLE

Do you have any involvement with football now?

I'm now at Oxford United as first team player liaison, I came back to work with the Oxford United academy a few years ago. I spent 12 months as head of academy player care, before joining up with the first team as they headed to Wembley for the league 1 play off final against Peterborough. After promotion to the Championship, they needed someone to work with the player's full time, and I'm so passionate about the role.

Best memory at Eastleigh FC?

Best memory at Eastleigh was probably the games against Bolton and Brentford in the FA Cup. Both home and away games against Bolton we memorable. We were so close in the home leg to winning the tie and then gave it everything away from home coming out on the losing side 3-2 late on. Brentford away was not so close, but still a wonderful achievement, they were just to good on the day.



JOE PARTINGTON

Do you have any involvement with football now?

Yes, I am sports marketing manager for Skechers football, so I am responsible for creating the strategy for Skechers to sign athletes all over the world, to promote football boots.

I also am the co commentator for bbc radio Solent on all AFCB games.

Best memory at Eastleigh FC?

A lot of good memories, but all of the fa cup experiences were great. Crewe away and Swindon away with a special mention for the Bolton game.

Worst memory at Eastleigh FC?

Leaving after my second time

Most memorable goal scored?

The obvious mention is the Bolton goal!



3 STAR COUNTRY
HOUSE HOTEL

WEDDING
VENUE

BAR AND
RESTAURANT

COFFEE
SHOP

THE MALLYAN SPOUT HOTEL, GOATHLAND, WHITBY, YO22 5AN



M
MILLWOOD
HOTELS

For more information on the Fox & Hounds Ainthorpe and the other hotels in the Millwood Hotel Group, please go to:

www.millwoodhotels.uk



THE FOX & HOUNDS
AINTHORPE



TRADITIONAL
COUNTRY INN

BAR AND
RESTAURANT

CAMPING
PODS

HOLIDAY
COTTAGE

THE FOX & HOUNDS, 45 BROOK LANE, AINTHORPE, WHITBY, YO21 2LD



M
MILLWOOD
HOTELS

For more information on the Fox & Hounds Ainthorpe and
the other hotels in the Millwood Hotel Group, please go to:

www.millwoodhotels.uk



WALWORTH
CASTLE

12TH CENTURY CASTLE – HOTEL, BAR & RESTAURANT – WEDDING VENUE – HOLIDAY COTTAGE & LODGE

WALWORTH CASTLE, WALWORTH, DARLINGTON, DL2 2LY



M
MILLWOOD
HOTELS

For more information on the Fox & Hounds Ainthorpe and the other hotels in the Millwood Hotel Group, please go to:

www.millwoodhotels.uk



WALKING FOOTBALL



AS REGULAR READERS WILL KNOW, THE WALKING FOOTBALL CLUB MEETS REGULARLY EACH WEEK, MEN ON MONDAYS AND THURSDAYS, LADIES SUNDAYS AND WEDNESDAYS AND THE MOBILITY GROUP ALSO ON WEDNESDAYS.

We also play in local, regional and national competitions, for example we are taking 4 teams up to Scotland next April to compete in the Glasgow Trophy.

There is also the opportunity for our players to represent their country and several have done so already. Next month is the Walking Football World Cup and we are proud to have 2 of our number involved in that.

Sarah Harper is captain of the England over 50 ladies team and has represented England now for 3 years. Our first player to be selected for international recognition was James Trant who played for the England over 65 side on a number of occasions.

James is now a member of the coaching staff in the England set up and both he and Sarah will be off to the Alicante region of Spain next month and we wish them well.

If that whets your appetite to get involved in Walking Football, we would be delighted to hear from you. Whether you see yourself as a future international or just fancy a kickabout, you can get in touch via the contact form on our website at <https://eastleighcwalkingfootball.co.uk/come-join/>

We would love to hear from you.

Ian Ritchie

Charlie's

AWARD WINNING COFFEE
MOUTH WATERING CAKES
PERFECT PASTERIES
LOADED FRIES
BREAKFAST MUFFINS
TASTY SNACKS
AND MORE...



20%

Charlie's

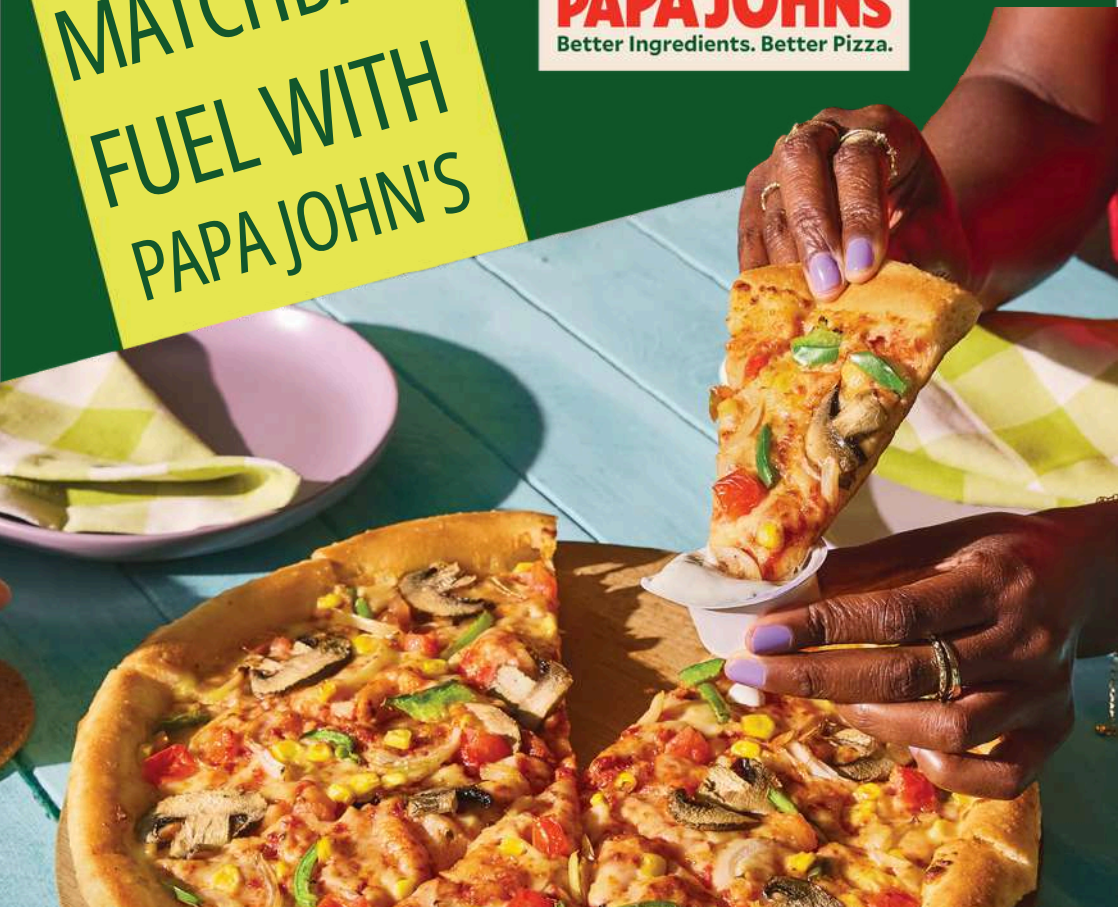
20%

USE THIS COUPON FOR 20% OFF ALL
PURCHASES!

Ganger Farm Way, Romsey SO51 0EE

MATCHDAY
FUEL WITH
PAPA JOHN'S

PAPA JOHN'S
Better Ingredients. Better Pizza.



**ANY LARGE
PIZZA***

£10

USE CODE : PJ10
VALID FOR DELIVERY
& COLLECTION

*Terms apply. Any additional toppings added will be charged at menu price. This offer is not available in conjunction with any other offer. Minimum delivery and delivery charges will apply. Offer can be withdrawn without notice. Only available in Eastleigh store

 **PAPA JOHN'S EASTLEIGH – 1C HIGH ST, EASTLEIGH, SO50 5LB**
 **023 8065 2222**
 **OPEN: 11AM-1AM MON-THURS, 11AM-3AM FRI-SAT**
 **ORDER AT [PAPAJOHNS.CO.UK](https://papajohns.co.uk) OR VIA OUR APP**

SUNDAY CARVERY

Two-course carvery
£19.95 per person

Served 12pm to 4pm
(last sitting at 3pm)





25/26

LEAGUE TABLE

POS		PLD	W	D	L	F	A	+/-	PTS	LAST 6
1	Forest Green Rovers	10	7	3	0	18	5	13	24	●●●●●●
2	Carlisle United	10	7	2	1	21	7	14	23	●●●●●●
3	Rochdale	8	7	0	1	16	4	12	21	●●●●●●
4	Boreham Wood	9	6	2	1	19	11	8	20	●●●●●●
5	Southend United	9	5	3	1	15	6	9	18	●●●●●●
6	Scunthorpe United	8	5	3	0	15	7	8	18	●●●●●●
7	Tamworth	10	5	1	4	12	14	-2	16	●●●●●●
8	York City	8	4	3	1	15	7	8	15	●●●●●●
9	Hartlepool United	10	3	5	2	9	4	5	14	●●●●●●
10	Brackley Town	9	3	4	2	9	8	1	13	●●●●●●
11	Wealdstone	10	4	1	5	16	16	0	13	●●●●●●
12	Aldershot Town	10	3	3	4	23	19	4	12	●●●●●●
13	Altrincham	10	4	0	6	14	16	-2	12	●●●●●●
14	FC Halifax Town	10	3	3	4	12	17	-5	12	●●●●●●
15	Gateshead	10	3	2	5	14	25	-11	11	●●●●●●
16	Eastleigh	9	3	1	5	10	13	-3	10	●●●●●●
17	Yeovil Town	10	3	1	6	10	15	-5	10	●●●●●●
18	Solihull Moors	10	2	4	4	12	18	-6	10	●●●●●●
19	Braintree Town	10	3	1	6	11	17	-6	10	●●●●●●
20	Woking	10	2	2	6	11	15	-4	8	●●●●●●
21	Boston United	9	2	2	5	8	15	-7	8	●●●●●●
22	Morecambe	7	2	1	4	11	20	-9	7	●●●●●●
23	Sutton United	10	1	2	7	12	21	-9	5	●●●●●●
24	Truro City	10	1	1	8	6	19	-13	4	●●●●●●

OTHER ENTERPRISE NATIONAL LEAGUE FIXTURES TODAY

- Aldershot Town vs Yeovil Town
- Boston United vs Braintree Town
- Morecambe vs FC Halifax Town
- Scunthorpe United vs Boreham Wood
- Tamworth vs Wealdstone

[illegible]

SQUAD LIST AND SPONSORS

1 NICK TOWNSEND



David Bowen Consultancy

2 RICHARD BRINDLEY



H A LASER

3 JAKE VOKINS



Glanville Solicitors

4 LLOYD HUMPHRIES



Neptune Window Cleaning

5 LUIS FERNANDEZ



Accord Accountants

6 TEMI EWEKA



Candidsky

7 KIERON EVANS



Gascare

8 JAKE TAYLOR



Waterfront Restaurant

9 PAUL MCCALLUM



Hampshire PAT Testing

11 AARON BLAIR



Fred & Alex Cole

14 ZAVIER MASSIAH-EDWARDS



Available to sponsor

15 HARVEY SAUNDERS



Charisma Recruitment

16 AARON PIERRE



Vision Financial Strategies

17 JOSH LUNDSTRAM



The Badgeman

18 ANGEL WARUIH



The IRO's

SQUAD LIST AND SPONSORS

21

SONNIE DAVIS



Available to sponsor

22

JOSH MCNAMARA



Sandgar LLC

23

LOUIE HOLZMAN



Available to sponsor

24

JORDAN COUSINS



CK Scaffolding

27

ARCHIE HARRIS



RSW Law

30

CONNOR UNDERHILL



WTD Distributions

31

NIALL MAHER



InScapes

34

FREDDIE INGRAM



Available to sponsor

35

COBY KILICK



Available to sponsor

36

ETHAN JONES



Available to sponsor

37

CHASE MICHEL



Available to sponsor

Player sponsorship packages are available at £500 + VAT

Receive a framed signed shirt or signed photo and get your sponsor logo / name on the player profile in the matchday programme and the official club website.

If you are interested in sponsoring a player, please contact commercial@eastleighfc.com

NEXT UP

UPCOMING FIXTURES



WEALDSTONE VS EASTLEIGH
 Saturday 27th September (KO 3pm)
 Grosvenor Vale



EASTLEIGH VS SOLIHULL MOORS
 Saturday 4th October (KO 3pm)
 Silverlake Stadium



TRURO CITY VS EASTLEIGH
 Tuesday 30th September (KO 7:45pm)
 Truro Sports Hub



BOREHAM WOOD VS EASTLEIGH
 Saturday 18th October (KO 3pm)
 Mangata Pay UK Stadium

Get behind the Spitfires!

Home match tickets are now on sale and available to purchase at www.eastleighfc.com/tickets or by scanning the QR code





EASTLEIGH

Interim Manager: Jason Bristow



SOUTHEND UNITED

Manager: Kevin Maher

	Starting	Substitute	Yellow card	Red card	Goals
1 Nick TOWNSEND (GK)					
2 Richard BRINDLEY					
3 Jake VOKINS					
4 Lloyd HUMPHRIES					
5 Luis FERNANDEZ					
6 Temi EWEKA					
7 Kieron EVANS					
8 Jake TAYLOR (C)					
9 Paul McCALLUM					
11 Aaron BLAIR					
14 Xavier MASSIAH-EDWARDS					
15 Harvey SAUNDERS					
16 Aaron PIERRE					
17 Josh LUNDSTRAM					
18 Angel WARUIH					
21 Sonnie DAVIS					
22 Josh McNAMARA (GK)					
23 Louie HOLZMAN					
24 Jordan COUSINS					
27 Archie HARRIS					
30 Connor UNDERHILL					
31 Niall MAHER					
34 Freddie INGRAM					
35 Coby KILLICK					
36 Ethan JONES					
37 Chase MICHEL					

	Starting	Substitute	Yellow card	Red card	Goals
1 Nick HAYES (GK)					
2 Gus SCOTT-MORRISS					
3 Nathan RALPH (C)					
4 George WIND					
5 Adam CROWTHER					
6 Ben GOODLIFFE					
7 Jack BRIDGE					
8 Noor HUSIN					
9 Andrew DALLAS					
10 Sam AUSTIN					
11 Josh WALKER					
14 Tom HOOPER					
15 Joe GUBBINS					
16 Harry TAYLOR					
17 Cavaghn MILEY					
18 Slavi SPASOV					
19 Leon PARILLON					
22 Keenan APPIAH-FORSON					
23 James MORTON					
24 Charley KENDALL					
28 Olly COKER					
30 Collin ANDENG NDI (GK)					
33 Harry BOYES					

MATCH OFFICIALS

Referee: Harrison Blair

Assistants: Daniel D'Urso & Adam Wilson

Fourth official: Richard J. Morris



UP NEXT AT THE SILVERLAKE

Eastleigh vs Solihull Moors

Saturday 4th October (KO 3pm)