

THE SPITEFIRE



SOUTHPORT | ISUZU FA TROPY | 10.01.26 | 3PM

DIRECTORY



Company name: Eastleigh Football Club Limited
Company number: 05488155
Shareholders/current ownership: SJD Leisure Limited
Stadium: Silverlake Stadium, Stoneham Lane, Eastleigh, Hampshire, SO50 9HT.
Telephone: 02380 613361
Email: admin@eastleighfc.com
Website: www.eastleighfc.com

CLUB HONOURS

Hampshire Intermediate Cup: 1950/51 Hampshire League Division 3: 1950/51, 1953/54 Hampshire League Division 2: 1969/70 Hampshire Midweek Floodlit Cup: 1979/80 Premier Division: 2002/03 Russell Cotes Cup: 2005/06 Hampshire Senior Cup: 2012/13 Conference South: 2013/14 Wessex League Cup Runners Up: 2002/03

BOARD OF DIRECTORS

Chairman: Stewart Donald
Vice Chairman: Thomas Coffey
Directors: Stewart Donald, Thomas Coffey, Mick Geddes, Richard Hill, Allen Prebble & Alex Pike
Associate Directors: Mike Wimbridge, Joseph Higgins, Chas Milner, Gary Tonner, Stuart Solly, Dr Keith D Love, Donald Iro & Paul Lucas

FOOTBALL STAFF

First Team Manager: Scott Bartlett
First Team Coach & Head of Scholarship: Jason Bristow
First Team Goalkeeping Coach: Vince Bartram
Club Physio: Chris Onoufriou
Club Doctors: Dr Luke Sammut & Dr Greg Warner
First Team Analyst: Matt Musgrove
First Team Kit Officer:
Head Of Grounds:

CLUB MANAGEMENT

Head of Football Operations: Jamie White
Club Secretary: Ray Murphy
Club Safety Officer: Mick Brown
Head of Media and Communications: Ricky Hart
Community Engagement Officer: Josh Nace

MATCHDAY PROGRAMME

Designer and editor: Marcus Mansfield
Contributors: James Wallace, Ricky Hart, Ed Groves & Ian Ritchie
Photographers: Graham Scambler

The views expressed in this publication are not necessarily those of Eastleigh FC.

IN THIS ISSUE

05 Scott Bartlett
 12 Last Time Out
 16 Through the Lens
 18 Spitfire in the Spotlight
 28 Junior Spitfires
 40 Away Travel
 41 Southport
 49 Walking Football
 54 Player Stats
 55 Squad List and Player Sponsors
 57 Next Up



PRINCIPAL PARTNERS



HERE FOR THE GAME. AND EVERYONE WHO MAKES IT HAPPEN.

With 450 Enterprise branches across the nation, you'll find us close to all 72 clubs in the National League. So we're proud to be here for everyone. From the fans, to the groundskeeper, to Pam who makes the teas.

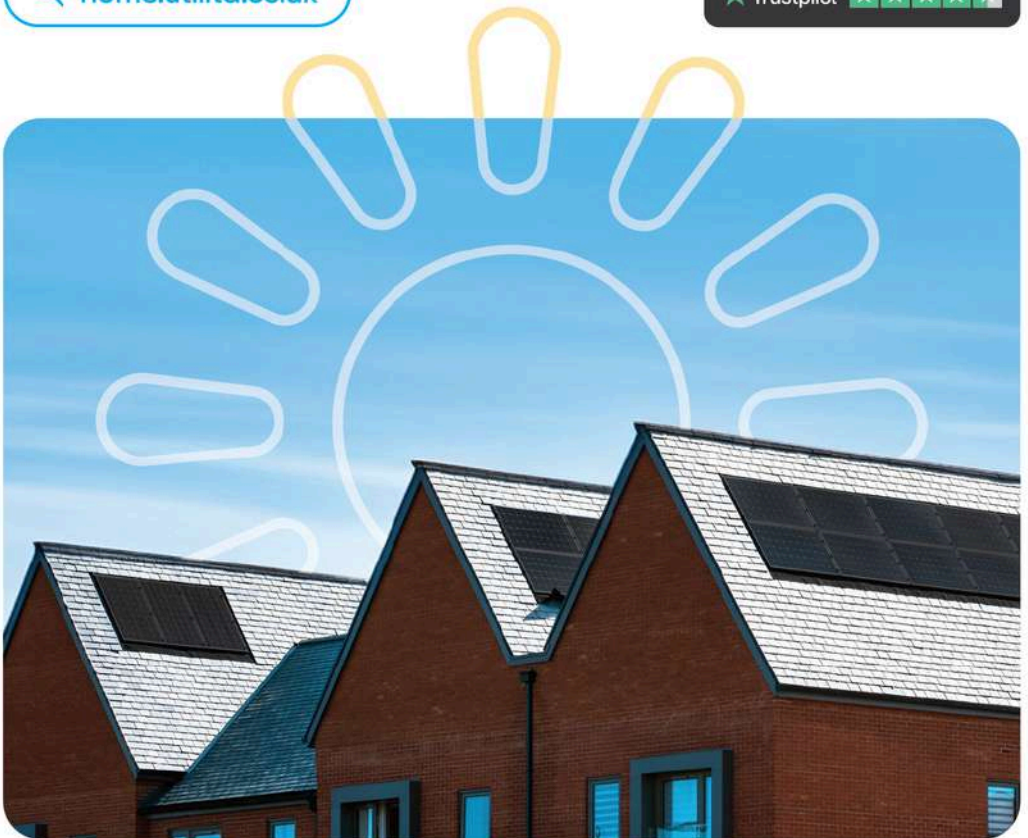


Solar today. Brighter tomorrow.

Get your FREE home survey today.

 home.utilita.co.uk

 Trustpilot 





Good afternoon and welcome to everyone for today's FA Trophy tie against Southport!

Following a brief break to recharge after a busy Christmas period, we are back at it and have prepared well for a demanding run of fixtures, with five games in the next 15 days starting today.

The squad is in a good place, but it will certainly be tested over the coming weeks, so it is important that everyone continues to train well and is ready to have an impact when called upon.

Today's match will be another tough challenge. We will not be taking Southport lightly and will be as strong as possible for this fixture.

This game comes on the back of a positive run of results, where hard work, team spirit and quality have seen us come out on the right side of some difficult fixtures, none more so than a demanding week that included away trips to Yeovil and Boston.

I would like to thank the supporters who have been with us throughout this period. We know this can be an expensive time of year and truly appreciate the effort you make to follow us home and away.

I hope you enjoy the game.

Regards,
Scott and Staff



PTS COMPLIANCE

HEALTH & SAFETY SERVICES & TRAINING

We're always looking for great team players!

If you want to be part of our permanent team of fully qualified engineers or account managers, and think you have what it takes to deliver quality work and superior customer service, then get in touch.

POSITIONS AVAILABLE:

- PAT Testers
- Electricians
- Fire Extinguisher Engineers
- Fire Alarm Engineers
- New Business Sales Execs

WHAT WE OFFER:

- Competitive Salary
- 28 days holiday that rises on length of employment
- Company Pension
- Branded van and uniform
- Reward scheme
- Annual company events

To be considered for any of these roles please send your CV to lisa@ptscompliance.co.uk or find out more at www.ptscompliance.co.uk.





JORDAN COUSINS

WELCOME BACK TO THE SILVERLAKE STADIUM FOR THIS AFTERNOON'S FA TROPHY FIXTURE AGAINST SOUTHPORT!

To start with, I would like to welcome everyone associated to Southport to the Silverlake for this afternoon's game. I would also like to give a warm welcome to our fans who have come along to the Silverlake to support us once again.

December has been a good month for us all and we have had a good consistent start to January. The performances are picking up so we as a group are excited for a busy next few weeks.

Progressing in this competition and potentially getting to Wembley would mean everything to us and something you take through your whole career. So

any opportunity to get to Wembley, you have to take it and we will definitely be doing that on Saturday.

Coming off a five games unbeaten, the squad are high in confidence as we are winning and haven't lost in a while. Now we have got to continue to build on it and we've got a busy week with three games here at the Silverlake. So the plan is to keep this run going and hopefully first get through to the next round on Saturday.

On a personal note, I am progressing well with my injury recovery and rehab and I am hoping to feature again at some point this month. Everyday I am continuing to work on my recovery and support the boys.

Thank you all for your continued support!

Jordan Cousins



THE NATIONAL LEAGUE

FIXTURES 2025/26

AUGUST

09 BRACKLEY TOWN A
16 GATESHEAD H
20 ALDERSHOT TOWN A
23 BOSTON UNITED H
25 FOREST GREEN R'VERS A
30 ALTRINCHAM H

SEPTEMBER

02 SCUNTHORPE UTD H
06 TAMWORTH A
13 FC HALIFAX TOWN A
20 BRAINTREE TOWN H
24 SOUTHEND UNITED H
27 WEALDSTONE A
30 TRURO CITY A

OCTOBER

04 SOLIHULL MOORS H
18 BOREHAM WOOD A
25 MORECAMBE H

NOVEMBER

05 SUTTON UNITED A
08 YORK CITY H
15 CARLISLE UNITED A
22 HARTLEPOOL UNITED H
29 ROCHDALE A

DECEMBER

06 BRACKLEY TOWN H
20 GATESHEAD A
26 WOKING H
30 YEOVIL TOWN A

JANUARY

03 BOSTON UNITED A
17 ALDERSHOT TOWN H
20 SOUTHEND UNITED A
24 FC HALIFAX TOWN H
31 BRAINTREE TOWN A

FEBRUARY

07 WEALDSTONE H
10 SOLIHULL MOORS A
14 BOREHAM WOOD H
21 MORECAMBE A
25 TRURO CITY H
28 CARLISLE UNITED H

MARCH

07 YORK CITY A
14 ROCHDALE H
21 HARTLEPOOL UNITED A
24 SUTTON UNITED H
28 FOREST GREEN R'VERS H

APRIL

03 WOKING A
06 YEOVIL TOWN H
11 ALTRINCHAM A
18 TAMWORTH H
25 SCUNTHORPE UNITED A

All dates are subject to change.

From the Boardroom to the Pitch. F One Technologies Keeps Your Business Connected.



Business Communications, Simplified.



SMB Reseller
of the Year
Finalist



TECHNOLOGY
RESELLER OF THE YEAR
2023
Finalist



MSP Award
of the Year
2023
Winner



CUSTOMER
CHAMPIONS
2023
Finalist



Best After-Sales
Support
Winner



TECHNOLOGY
RESELLER OF THE YEAR
2023
Finalist



TECHNOLOGY
RESELLER OF THE YEAR
2023
Finalist



CUSTOMER
CHAMPIONS
2023
Finalist



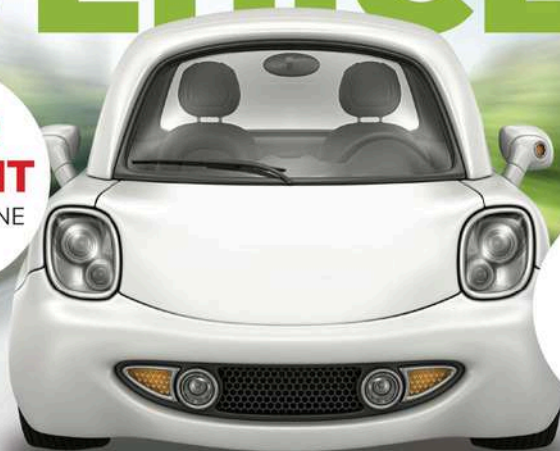
CUSTOMER
CHAMPIONS
2023
Finalist



Best Customer
Support 2023
Finalist

WE BUY ANY VEHICLE

**GET AN
INSTANT**
QUOTE ONLINE



**BEST
PRICE
PAID**

ANY AGE, ANY CONDITION

No hidden charges or fees • 75 years' experience



Get an instant quote



FREE Collection



Quick Payment

Enter your reg now at
silverlake.co.uk



Make a difference with udonateacar.com

Donate as little as £5 from the value of your vehicle when you sell your car to Silverlake via our charity scheme, UDonateacar. Our charity partners, Global's Make Some Noise, will ensure 100% of your donation supports local community charities.



Silverlake: Shaping a Greener Future with Community at its Heart

At Silverlake Automotive Recycling, we take pride in our role within the community. We continuously strive to make a positive impact through charitable work, environmental initiatives, partnerships, and the opportunities we provide for our staff and apprentices.

Over the years, we've built strong relationships with local organisations, supporting over 25 charities and groups this year alone, including Blue Light Trust, British Heart Foundation, Naomi House, Rainbow Trust, Swanmore Fate and Curdridge Reading Rooms play area, positively affecting lives across Hampshire and beyond. Our business is about more than just recycling; it's about making a meaningful difference to every person and company we engage with.

Our community involvement has been deeply rewarding. In 2023, we received multiple accolades at the ATF Professional Vehicle Recycling Awards, including the Community Impact Award, the Recycled Vehicle Parts Supplier Award, and the Salvage Company Award. These honours underscore our dedication to offering top-quality service while promoting eco-friendly practices and charitable initiatives.

This year, we are finalists again in three prestigious categories: Community Impact, Salvage Company of the Year, and Large Vehicle Recycling Company. These nominations highlight our commitment to high service standards and consistent contributions to our community.

Our focus on sustainability and community engagement remains central to our success. This month, we've been nominated as finalists for the Contribution to the Community Award at the Hampshire Business Awards 2024. This recognition reflects the hard work our team puts into supporting local initiatives and addressing community needs. From backing local sports teams to partnering with emergency services, we're committed to making a positive difference where it counts most.

One of our long-standing partnerships is with the Hampshire and Isle of Wight Fire and Rescue Service. For over a decade, we've provided salvage vehicles for essential training exercises, helping firefighters train for road traffic rescues. Last month, we supported the UK Rescue Organisation's Festival of Rescue, supplying over 100 vehicles for teams across the UK to hone life-saving skills. This hands-on training is vital to the safety of all road users, and we're proud to assist.

We also sponsor and partner with Eastleigh FC, where the Silverlake Stadium has become a hub for grassroots development. Earlier this year, we hosted MOTO FEST at Eastleigh, a fundraising event featuring family activities, music, and vehicle displays.

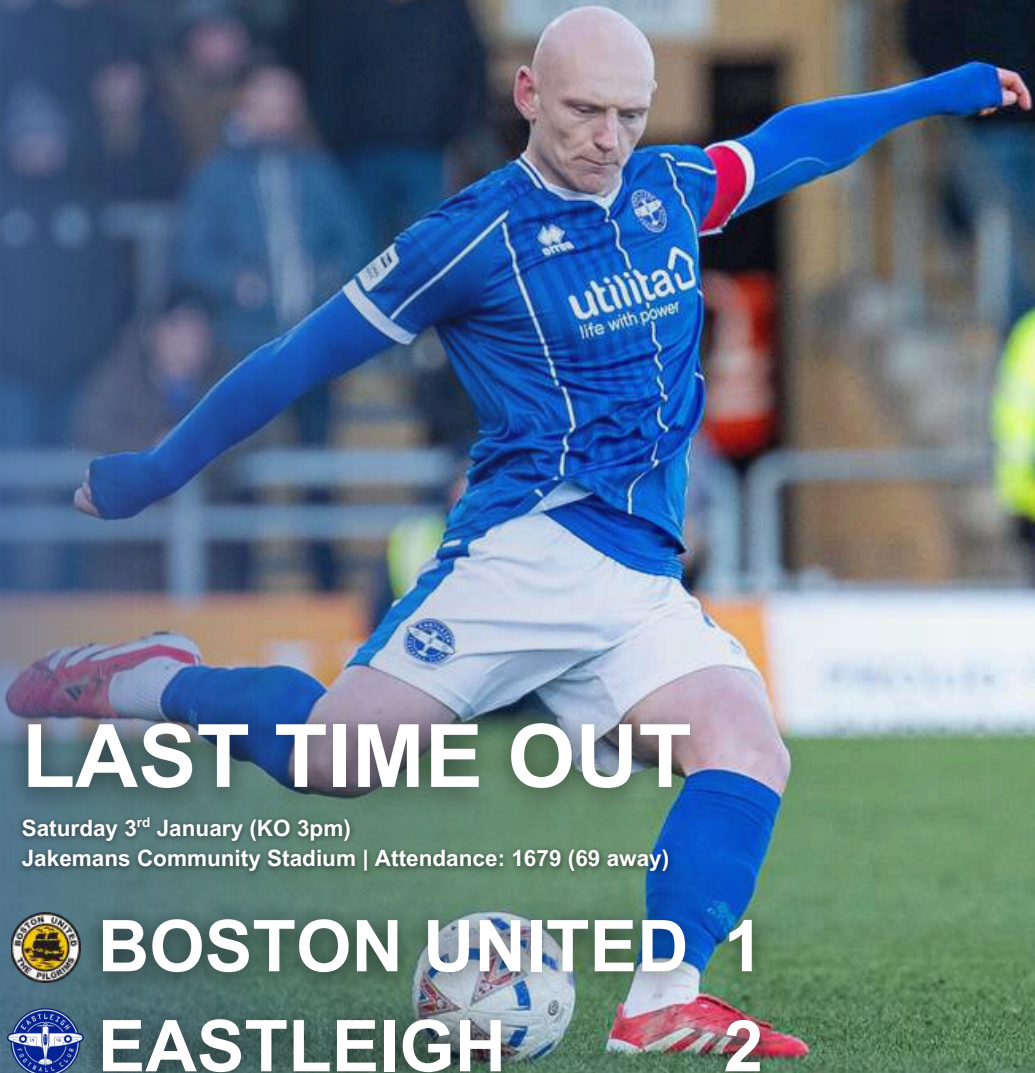
The event drew over five thousand visitors from across Hampshire and raised over £20,000 for local charities.

Our U-Donate-a-Car initiative, now 12 years old, allows donations from as little as £5 to the value of a whole vehicle, with proceeds benefiting local charities. It's a great way to recycle vehicles while contributing to worthy causes. The program is easy to participate in and supports both environmental sustainability and community well-being.

Silverlake's commitment to the community is deeply embedded in our values. We employ over 150 local staff, offering secure jobs where they can achieve their potential. As we look to the future, we have plans to grow both our business and workforce, ensuring we continue to lead by example and build a more sustainable future for everyone in our community.

We are proud to have been part of the Hampshire community for over eighty years and remain dedicated to making our community proud of us. We are committed to continually raising our contribution to the local economy as we grow and move forward.

Explore how Silverlake is shaping a greener tomorrow by visiting our consultation website: silverlakeconsultation.co.uk



LAST TIME OUT

Saturday 3rd January (KO 3pm)

Jakemans Community Stadium | Attendance: 1679 (69 away)



BOSTON UNITED 1



EASTLEIGH 2

EASTLEIGH TOOK ALL THREE POINTS BACK TO HAMPSHIRE AFTER DEFEATING BOSTON UNITED 2-1 AFTER GOING A GOAL DOWN. BOTH STRIKERS, HARVEY SAUNDERS AND THEN AARON BLAIR, PROVIDED THE GOODS FOR THE SPITFIRES ONCE AGAIN!

Boston United carved out the first chance of the game from a corner. Frankie Maguire's delivery in the sixth minute found Oisin Gallagher, who's header was saved fantastically by Nick Townsend.

The Pilgrims, who started the game on the front foot, were rewarded for their fast start when Temi Eweka's mistimed challenge on Maguire led to a free-kick. The resulting free-kick, that was crossed from the right hand-side, would cause pandemonium in the penalty box. A Boston United shot that was heading in struck the hand of an Eastleigh defender, however, the ball fell too the Pilgrims captain Sloggett, who rifled in a low effort passed Townsend to give the hosts the lead.

After 18 minutes, the Spitfires had their first break coming down the right side of the pitch when Sam Pearson skipped away from Adam Crowther, and delivered a ball into the box that unfortunately evaded every blue shirt in the box.



Eastleigh's next attack, coming in the 25th minute, would be much more rewarding! Josh Lundstram picked the ball up on the edge of the box and laid the ball off to James Waite. Waite spread the ball out wide to Archie Harris, who took one touch before delivering a perfect ball into Saunders, who was unmarked. Saunders made no mistake in heading the ball passed Rhys Lovett to equal the scoring.

The hosts came incredibly close to reclaiming the lead in the 33rd minute when Kieran Donnelly's effort from a tight angle was beaten away by Townsend, but only as far as Gallagher, who skied his close range effort over.

As half time approached, Lundstram found some space outside the edge of the box and opted to try his luck from distance, needing an outstretched hand from Lovett to keep his low but powerful effort out of goal. This was the last bit of action of the half as the teams went into halftime drawing.





Boston started the half similarly to the first, with a Maguire corner leading to a fantastic Townsend save, this time from Lankshear's header.

However it would be the Spitfires that would strike first in the second half on the 58th minute mark! Evans long ball forward tempted Lovett to try claim the ball before Blair. However, the goalkeeper missed his clearance and gave Blair the easiest goal of his career as he tapped home into an empty net.

Just after the goal, Eastleigh would prepare three substitutes, with Saunders coming off for Paul McCallum. Waite and Pearson departed for debutants Giles and Spiers.

With just 15 minutes to play, Boston United had a chance cleared of the line from captain Lloyd Humphries after a short corner fell too Maguire on the edge of the box, his strike looked to be heading in until Humphries kneeed the ball to safety.

Boston United had a golden opportunity to rescue the game in the 88th minute when substitute Jody Hiwula was brought down by Aaron Pierre just outside the box; the defender was given a yellow card, but ultimately stopped an attack that could have led to a goal.

This intervention was the last of the game and was ultimately vital in Eastleigh taking all three points back to SO50, whilst extending their unbeaten run to 5 games.

Report by Ed Groves





THROUGH THE LENS: BOSTON UNITED (A)





Graham Scambler Photography

Check out some of the top pics from our recent outing through the lens of official Eastleigh FC club photographer Graham Scambler.

For more photographs, check out his website by scanning the QR code for more!



“

It's an opportunity to
go and play at
Wembley and express
yourself completely
on one of the biggest
stages in this country

”

**Niall
Maher**

SPITFIRE IN THE SPOTLIGHT



You joined the club in August 2024, having spent two years at Grimsby Town, how have you found life here at the Silverlake?

I've really enjoyed my time here so far. The first was great for me personally. Looking back at the season and playing 39 games, I was really happy with that and then obviously I picked up a serious injury. This obviously put a damper on the the rest of the season and the start of this season but I'm glad to be back out there now and playing football again.

You picked up a serious knee injury in March last year, how have you found the recovery process and how excited are you to be back playing again?

I found the recovery process okay to be fair. Personally, it's the most serious injury I've had in my career to date and obviously it throws some challenges your way. It throws both mental and physical challenges but I've had a great support network around me both at home and at the club which has helped me get through the process comfortably.



In the FA Trophy, the club has the chance to play at Wembley, what would that opportunity mean to you?

I think it's always a big opportunity. It's an opportunity to go and play at Wembley and express yourself completely on one of the biggest stages in this country. So, I think for every player it's a target and something you want to do.



As previously mentioned, you spent two seasons at Grimsby Town, tell us about your experience of playing in the football league?

It was brilliant!! I've done it for half of my career and then the other half has been spent in non-league but it was fantastic. I had some great times there with great memories. I managed to pick up a good number of games under my belt including in the FA Cup run in my first season where we reached the quarter-finals. It's completely different to the National League but it's not much so much of a bigger difference when a team reaches League Two from the National League.

If you had to pinpoint one specific moment in your career that stood out to you the most, what would it be?

It would probably have to be making my debut in the Championship for Bolton Wanderers. It was a club that I spent 14 years at and went through the academy ranks to the first team. It was such a proud moment for myself and my family.



Our fans travel up and down the country to support us, what does this mean to the squad and to you personally?

It's an amazing feeling, especially as wherever you go in this league is a long journey with a number of games that are over a certain distance. As a squad we've got to refund the supporters as such with our performances because they had put their hard earned money into travelling up and down the country to support us and it means a lot to the lads.

Finally, what are your goals for the remainder of the season?

Personally, I think just trying to get on the pitch and get as many games as I can and then obviously come the end of the season see where I am at. Collectively, as a group I think we have to obviously push for promotion and try to finish as high as possible and close the gap in and around the play-offs.



**Niall Maher is sponsored by
InScapes**



25 YEARS CHAMPIONING GRASSROOTS

Shout it from the terraces, it's our anniversary! Since 2000, we've been transforming lives, giving every community great places to play sport. We're not finished yet, so here's to more game-changing investment.

Search Football
Foundation
to find out more



CLUB NEWS



EASTLEIGH FOOTBALL CLUB ARE PLEASED TO ANNOUNCE THE SIGNING OF DEFENDER WILL SPIERS, WHO JOINS THE SPITFIRES ON LOAN FROM CARDIFF CITY UNTIL THE END OF THE SEASON.

Spiers has spent his development years with the Bluebirds, coming through their academy ranks and featuring consistently at youth and development level. During his time at Cardiff, he has made his senior debut in a Vertu Trophy fixture against Newport County earlier this season and has continued to build experience within competitive academy football.

The right-back spent time with Merthyr on loan after joining the Welsh side in October 2025. During his short stint with The Martyrs, Spiers secured four assists from 11 league appearances.

Bartlett expressed his delight after agreeing the deal, commenting: "Will is a player we've watched on numerous occasions and is an exciting, attack-minded wing-back. Following a brilliant loan spell at Merthyr, he attracted interest from the EFL, and we're delighted to have secured his services. "His versatility, pace and ability to carry the ball forward quickly will be a real asset to the squad."

Welcome to Eastleigh Football Club, Will!

This transfer is subject to National League approval, FA approval, and international clearance ahead of Will making his Eastleigh debut.

CLUB NEWS



EASTLEIGH FOOTBALL CLUB ARE PLEASED TO ANNOUNCE THE ARRIVAL OF DEFENDER LUEY GILES, WHO JOINS THE SPITFIRES ON LOAN FROM CARDIFF CITY UNTIL THE END OF THE SEASON.*

The 19-year-old has progressed through the academy system at Cardiff City, where he has developed within the club's youth and development squads. During his time with the Bluebirds, he has featured regularly at academy level and gained experience training in a professional first-team environment.

Primarily operating at left-back, Giles has continued his development through competitive youth football and now makes the move to Eastleigh to gain further experience in senior men's football.

Speaking after securing his man, Bartlett commented: "Luey is a talented player who has been in and around the Cardiff City first team. He possesses excellent quality and is comfortable in a number of positions down the left, as well as at left centre-back.

"He adds further depth to the squad and we're delighted to welcome him to the club!"

Welcome to Eastleigh Football Club, Luey!

This transfer is subject to National League approval, FA approval, and international clearance ahead of Luey making his Eastleigh debut.

ELITE DEVELOPMENT SQUAD AND ACADEMY NEWS

ELITE DEVELOPMENT SQUAD

Following the EDS side beating Millbrook 4-0 at the Silverlake in the Servio Men's Senior Cup on 11th November, the draw has been made for the Quarter-finals.



The Spitfires have been drawn against Hartley Wintney and will travel to the Jubilee Fields Recreation Ground on 3rd February. Victory will see the EDS team progress to the semi-finals which are set to take place in the week commencing 2nd March.



ACADEMY

There were three fixtures for our young Spitfires this week with the EDS and Tactic side picking up draws on Wednesday afternoon and the ML League side playing on Friday afternoon.

Information

Eastleigh FC Academy offers professional coaching to players from Under 8 through to Under 16. Our aim is to recruit local talented individuals and help every player to fulfill their potential through our structured training syllabus.

We operate outside of the constraints that arise when players sign for a football league club therefore all of our players receive professional academy level training once a week but can still participate in weekend football.

Contact Us

For all academy enquiries from Under 8-16s, or general academy enquires, please contact the following;

Joe Oastler - joastler@eastleighfc.com
Ashley Healy - ahealy@eastleighfc.com

ACADEMY RESULTS

W/C Monday 5th January
#SPITFIRES

EDS VS MAIDSTONE UNITED
1-1
LUFF

VS PLATFORM
4-4
HART (2), GILGOLY, HUBERT

VS PRECISION NEWBURY
WANTAGE FC
FRIDAY, 2PM
ML LEAGUE

FREE
LOCAL
DELIVERY

mkm.com

BUILDING SUPPLIES, **sorted.**

Tool, plant & equipment hire
available, ask in branch for
more information.

Woodside Road Eastleigh
SO50 4DP 0238212 3333



Check us out

MKM

hampshire*pat*testing

and electrical services tailored to suit your needs



0800 8048483

enquiries@hampshirepattesting.co.uk

www.hampshirepattesting.co.uk

JUNIORS PITFIRES

MY MATCHDAY

SCORE

EASTLEIGH _ V _ SOUTHPORT

GOALSCORERS

EASTLEIGH

SOUTHPORT

FREE KICKS

EASTLEIGH _

SOUTHPORT _

CORNERS

EASTLEIGH _

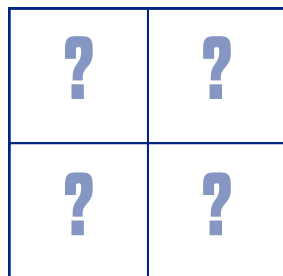
SOUTHPORT _

ATTENDANCE: _____

MY MAN OF THE MATCH: _____



CAN YOU SOLVE THE JIGSAW PUZZLE?



SPOT THE DIFFERENCE

[YOU ARE LOOKING FOR FIVE]



SPITFIRE SUMS

$$\begin{array}{c} \text{McNamara} \\ ? \end{array} - \begin{array}{c} \text{Blair} \\ ? \end{array} = \boxed{}$$

QUICKFIRE QUIZ



1. What is Southport's nickname?
2. What league do Southport play in?
3. Where do Southport play their home games?
4. Who did we play against last time out at the Silverlake Stadium?
5. Which Eastleigh player has the number 34 on the back of their shirt?

**CAN YOU
SPOT
THE BALL?**





3

SPOT THE BALL

McNamara (22) - Blair (11) = 11

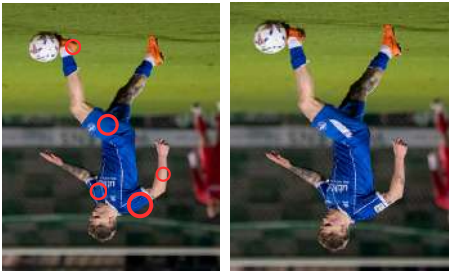
SPITFIRE SUMS

4	1
3	2

JIGSAW

QUICKFIRE QUIZ

1. The Sandgrounders, 2. National League North, 3. Jakemans Community Stadium, 4. Woking, 5. Freddie Ingram



SPOT THE DIFFERENCE

JUNIORSPITFIRES

ANSWERS

THE HISTORY OF EASTLEIGH FC

Eastleigh FC was founded on 22nd May 1946 by Derik Brooks and a group of friends at the Fleming Arms public house in Swaythling, Southampton.

OUR CLUB

The club's rise began then they were promoted to the Hampshire League in 1950 after two seasons in the Southampton Senior League (West). In just a year, they topped Division Three (West) and secured the Hampshire Intermediate Cup.

By 1955/56, Swaythling was competing in the Hampshire League Division 1. They returned to this level as champions on Division 2 in 1970. The club's name changed to Eastleigh FC in 1980, and they became founder members of the Wessex League in 1986.

Eastleigh won the Wessex League in 2002/03 and were promoted to Division One East of the Southern League. They went on to secure promotion to the Premier Division of the Isthmian League, eventually earning promotion to the conference South.

Over nine years in the Conference South, Eastleigh twice came close to earning promotion to non-league's highest tier but narrowly missed out on both occasions. They also had a memorable run in the FA Cup and secured silverware in the Hampshire Senior Cup in 2011/12.

In 2014, Eastleigh clinched the Skryll South title, gaining promotion to the National League and are now in the tenth season competing at this level.



OUR HOME

When formed, Swaythling Athletic began playing its home matches on Southampton Common behind where The Cowherds pub is now located.

In 1957, Swaythling Athletic moved to Ten Acres where the club has remained to this day and has been known as the Silverlake Stadium over the last ten seasons due to Eastleigh's stadium right naming partnership with local automotive recycling company Silverlake Automotive Recycling.



The stadium has undergone several renovations and expansions over the years, including the addition of floodlights in 1976, the construction of a grandstand, and since Stewart Donalds arrival, the ground has seen Sherwood restaurant, Brooks hospitality suit as well as the brand new south stand developed in recent years.



MATCHDAY FESTIVALS

COMPETE FOR A CHANCE TO PLAY ON THE
SILVERLAKE STADIUM PITCH AT HALF-TIME



£50
entry per
team

THE MATCHDAY FESTIVAL INCLUDES:

- 14 complimentary match tickets
- Additional **half-price match tickets**
- Group stages **kick-off at 12pm** with the final and play-off games on the Silverlake Stadium pitch at half-time
- Every player will be **presented with a medal** after the final whistle

MATCHDAY EXPERIENCES

MASCOT, GUARD OF HONOUR,
& BALL BOY/GIRLS



HOW TO GET INVOLVED:

If you are involved in youth team and would like to sign-up for a future matchday festival, please email **community@eastleighfc.com** to register your interest.

™ DYNO-ROD

Plumbing & Drains Services

Which?
Trusted Trader



★ Trustpilot

- ✓ No Call-Out Charge
- ✓ Fixed Price Quote
- ✓ Local Engineers
- ✓ Guaranteed Work*
*Subject to T&C's
- ✓ Domestic and Commercial Services



*From blocked drains to burst pipes, we're here to help. We're proud to offer **24/7/365** emergency response across the UK. No matter the problem, you can count on Dyno-Rod to get your home or business flowing again.*



Visit dyno.com

Or call us on



0333 305 8390



DYNO-ROD
Plumbing & Drains Services

OFFICIAL PARTNERS OF THE
NATIONAL LEAGUE



STAY OFF THE INJURY LIST

GET A SCAN



Whether it's
MRI, CT, or X-Ray
we've got you
covered with
our **TIC Health**
membership.

UNLIMITED SCANNING

FROM
£25 PER
MONTH

JOIN TODAY @ [TICHEALTH.CO.UK](https://tichealth.co.uk)

✓TIChealth

ONE OF THE UK'S LEADING MEDICAL DIAGNOSTICS AND IMAGING PROVIDERS

Score
13



PLAYER QUIZ

**JOSH
MCNAMARA**

In this section we tested the general knowledge of goalkeeper Josh McNamara. Go to the next page to find out how Josh got on.

JOSH MCNAMARA QUIZ



Question

Blair's Answers

- 1. Who is the longest reigning monarch in England?
- 2. Which company make the Switch game console
- 3. Which planet has the most extensive ring system?
- 4. What animal can be found on the Welsh flag?
- 5. Which British singer-songwriter had a hit called "Easy on Me"?
- 6. What is the name of the final book in the Harry Potter series?
- 7. What is the longest running American animated TV series?
- 8. In which city was Peaky Blinders set?
- 9. What number is a baker's dozen?
- 10. In a game of netball how many players on a team are allowed to score?
- 11. What is Britain's oldest recorded town?
- 12. What is the main ingredient in chocolate?
- 13. Which author wrote "The Grapes of Wrath"?
- 14. What is the name of the river which runs through Newcastle?
- 15. What is the name of the highest mountain in the British Isles?
- 16. What is Britain's best selling lager?
- 17. Which car manufactuer make the Model S?
- 18. Who holds the record for the most goals in a single European football season?
- 19. What is the cube root of 64?
- 20. Which is the only body part that is fully grown at birth?

- Elizabeth II
- Nintendo
- Saturn
- Dragon
- Ed Sheeran
- Deathly Hallows
- Simpsons
- Birmingham
- 13
- 2
- London
- Milk
- Pass
- Tyne
- Pass
- Guinness
- Tesla
- Ronaldo
- 4
- Eyes

Leaderboard

1	Josh McNamara	13
1	Josh Lundstram	13
3	Nick Townsend	11
4	Angel Waruih	8

Answers

1. Elizabeth II, 2. Nintendo, 3. Saturn, 4. Dragon, 5. Adele, 6. The Deathly Hallows, 7. The Simpsons
8. Birmingham, 9. 13, 10. 2, 11. Colchester, 12. Cocoa, 13. John Steinbeck, 14. River Tyne
15. Ben Nevis, 16. Birra Moretti, 17. Tesla, 18. Lionel Messi, 19. 4, 20. Eyes

DREAM FIVE-A-SIDE TEAM

LLOYD HUMPHRIES

We asked Lloyd Humphries for his dream Five-A-Side team made up of players that he has either played with or against. This is the team he came up with!



Dayle Grubb



Jacob Cane



Jason Pope



Sam Avery



Luke Purnell



SAVE BIG! GAMES GALORE

WAS ~~£79.99~~

NOW £59.99

Watch every match exclusively on DAZN
with NLTV Season Pass.

Sign up at DAZN.com/NLTV

Blackout restrictions apply

AWAY TRAVEL

In conjunction with the ‘1946’ supporters club, we are thrilled to announce we will be supplying coaches for every game.



Category	Adult	Child (16 & Under)
1946 Member	£20	£10
Non 1946 Member	£30	£15

COMING UP NEXT:



Tuesday 20th January
7:45pm KO
Roots Hall



Saturday 31st January
3pm KO
Rare Breed Meat Co.
Stadium



Any member of the supporters club will be able to watch the Spitfires on the road for a flat rate price for any game.

In order to take advantage of the competitive pricing, please firstly ensure you have completed your membership with the supporters club by emailing 1946clubinfo@gmail.com

We look forward to welcoming as many of you on board across the season!



Southport will make a 490 mile round trip to visit the Silverlake Stadium for this afternoon's Isuzu FA Trophy fixture.

The Sandgrounders play their home games at the Haig Avenue which has housed them since the stadium was constructed in 1905. The ground was originally called Ash Lane before being renamed in 1921 in honour of Earl Haig.

The ground has a maximum capacity of 6,008 with 1,537 seats in the grandstands leaving space 4,471 standing fans. The away end has a capacity of around 1,200 and is situated in the Blowick Terrace.

Southport held membership of the Football League from 1921 to 1978, however, they never progressed further than the third tier of the football pyramid. The club's greatest every achievement was winning the fourth division in

1972-73, under Jimmy Meadows having previously been promoted from the same division in 1966-67 under the management of Billy Bingham.

Upon leaving the Football League, the club joined the Northern Premier League which was then considered the fifth tier of English football where they remained until 1993 when they were promoted to the Football Conference. The Sandgrounders remained in the Football Conference until 2003 when they were relegated back to the Northern League Premier Division.

Southport were then transferred to the new Football Conference North, now known as the National League North, where they became the first side to win the National North in 2004-05 under manager Liam Watson.

PREVIOUS MEETINGS



17th December 2016
Enterprise National League
Southport 4-3 Eastleigh



10th September 2016
Enterprise National League
Eastleigh 1-1 Southport



28th November 2015
Enterprise National League
Eastleigh 1-0 Southport



8th August 2015
Enterprise National League
Southport 0-4 Eastleigh



10th February 2015
Conference Premier Division
Southport 1-2 Eastleigh



THE ROUTE TO **EASTLEIGH**

245
MILES



HAIG AVENUE



SILVERLAKE STADIUM

OPPOSITION SPOTLIGHT

Southport have struggled in the Enterprise National League North this season as they sit just one point above the relegation zone in 19th place. The Sandgrounders have picked up just 23 points from their 24 league games this season with five wins and eight draws respectively. In the Isuzu FA Trophy, the Sandgrounders defeated Leek Town 3-1 in the third round to set up this afternoon’s tie with the Spitfires.

SOUTHPORT’S LAST FIVE RESULTS

- 03/01/2025 | Southport 1-1 Scarborough Athletic | ENLN
- 30/12/2025 | Southport 2-4 Curzon Ashton | ENLN
- 26/12/2025 | Marine 4-2 Southport | ENLN
- 20/12/2025 | Southport 1-1 Worksop Town | ENLN
- 16/12/2025 | Alfreton Town 1-1 Southport | ENLN

SEASON PLAYER’S STATS

MOST APPEARANCES	TOP GOALSCORERS	ASSIST KINGS
Sonny Hilton (24)	Jordan Slew (5)	Sonny Hilton (4)
Teddy Lavelle (23)	Sonny Hilton (4)	Danny Lloyd (2)
Chris Renshaw (22)	Arthur Gnahoua (4)	Teddy Lavelle (2)

TOP ARRIVALS

PLAYER	CLUB	TRANSFER FEE
Chris Sze	Wigan Athletic	Loan Transfer
Jordan Slew	Morecambe	Free Transfer
Adrien Thibaut	Crewe Alexandra	Loan Transfer
Callum Edwards	Wrexham	Loan Transfer
Aaron Pickles	Accrington Stanley	Free Transfer



Mitre
DIFFERENT LEAGUE



3 STAR COUNTRY
HOUSE HOTEL

WEDDING
VENUE

BAR AND
RESTAURANT

COFFEE
SHOP

THE MALLYAN SPOUT HOTEL, GOATHLAND, WHITBY, YO22 5AN



M
MILLWOOD
HOTELS

For more information on the Fox & Hounds Ainthorpe and the other hotels in the Millwood Hotel Group, please go to:

www.millwoodhotels.uk



THE FOX & HOUNDS
AINTHORPE



TRADITIONAL
COUNTRY INN

BAR AND
RESTAURANT

CAMPING
PODS

HOLIDAY
COTTAGE

THE FOX & HOUNDS, 45 BROOK LANE, AINTHORPE, WHITBY, YO21 2LD



M
MILLWOOD
HOTELS

For more information on the Fox & Hounds Ainthorpe and
the other hotels in the Millwood Hotel Group, please go to:

www.millwoodhotels.uk



WALWORTH
CASTLE

12TH CENTURY CASTLE – HOTEL, BAR & RESTAURANT – WEDDING VENUE – HOLIDAY COTTAGE & LODGE

WALWORTH CASTLE, WALWORTH, DARLINGTON, DL2 2LY



M
MILLWOOD
HOTELS

For more information on the Fox & Hounds Ainthorpe and the other hotels in the Millwood Hotel Group, please go to:

www.millwoodhotels.uk



WALKING FOOTBALL



News from Eastleigh's Walking Football Club

A happy new year to all from Eastleigh's Walking Football Club.

We have had a quiet Xmas/ New Year period but our weekly sessions are now back in full swing. New Year being the time for resolutions.

If you are eligible, why not think about trying out Walking Football. It is a fast growing sport with an estimate 100,000 new taking part in the UK.

At Eastleigh we have men's sessions, a ladies session and a 'Mobility' group, which caters for anyone not able to move around so freely. To join us or to know more, visit our website and complete the form on our 'join us' page. <https://eastleighfcwalkingfootball.co.uk/come-join/>

As you will see from our website, we have men's sessions on Monday evenings (ideal for those still working) and 3 back to back sessions during Thursday daytime. The first of these is aimed at our 'older' players or those who like a slightly less competitive game. With just a hint of irony, we call this our 'Academy' group. Over the 3 Thursday sessions we have typically around 60 – 70 members participating. Our ladies group meets on Sunday afternoons. All sessions last for an hour and are held at The Silverlake all weather pitch.

Minimum age for men is 50 and for the ladies 40. Your first session will be free as a 'taster' and after that £4 per session.

We also have a Mobility session each Wednesday afternoon at Places Leisure (Fleming Park). This is ideal for those with any condition that might prevent participation in the more active sessions. EG people with Parkinsons, stroke recovery or any post operative or post injury situation. Again full information on the website on the Parkinsons and Mobility Group page.

Why not give it a go? Click on the link above is all you need to get started.

We look forward to welcoming you.

Ian Ritchie

Charlie's

AWARD WINNING COFFEE
MOUTH WATERING CAKES
PERFECT PASTERIES
LOADED FRIES
BREAKFAST MUFFINS
TASTY SNACKS
AND MORE...



20%

Charlie's

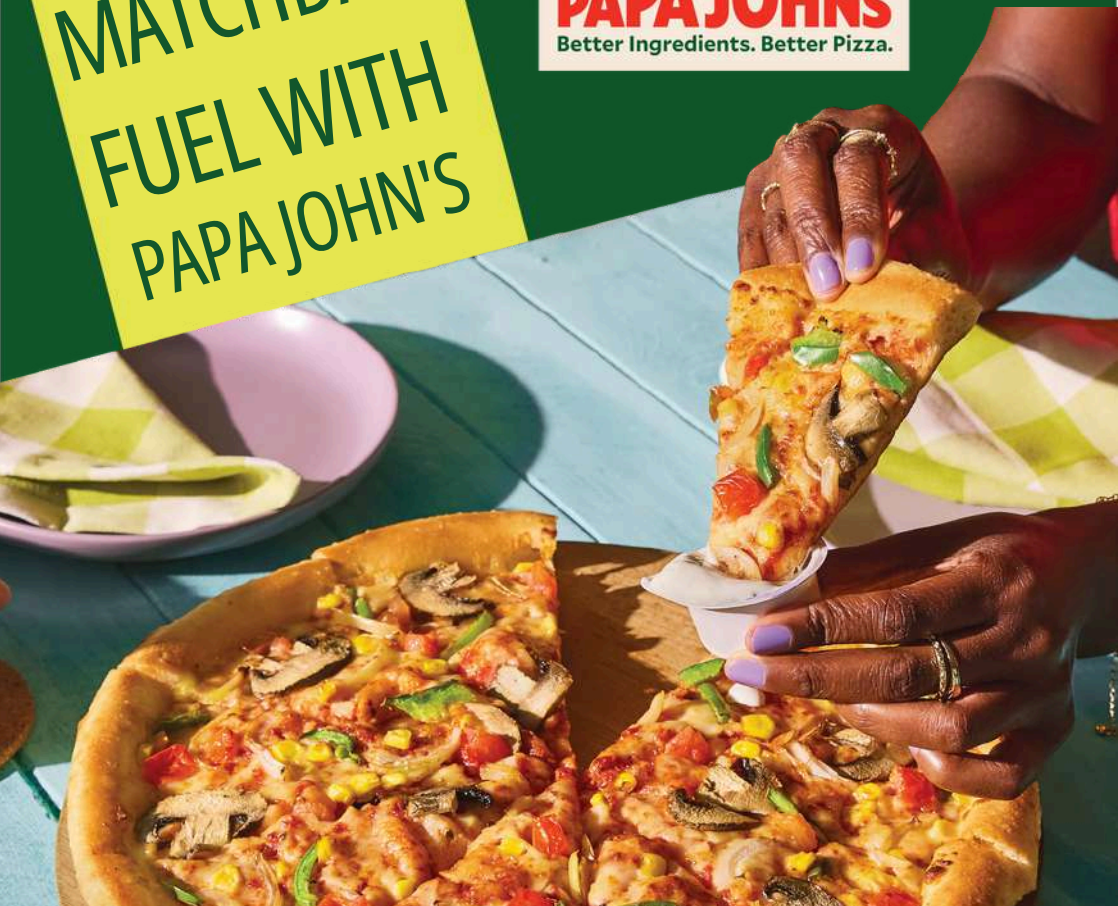
20%

USE THIS COUPON FOR 20% OFF ALL
PURCHASES!

Ganger Farm Way, Romsey SO51 0EE

MATCHDAY
FUEL WITH
PAPA JOHN'S

PAPA JOHN'S
Better Ingredients. Better Pizza.



**ANY LARGE
PIZZA***

£10

USE CODE : PJ10
VALID FOR DELIVERY
& COLLECTION

*Terms apply. Any additional toppings added will be charged at menu price. This offer is not available in conjunction with any other offer. Minimum delivery and delivery charges will apply. Offer can be withdrawn without notice. Only available in Eastleigh store

 **PAPA JOHN'S EASTLEIGH – 1C HIGH ST, EASTLEIGH, SO50 5LB**
 **023 8065 2222**
 **OPEN: 11AM-1AM MON-THURS, 11AM-3AM FRI-SAT**
 **ORDER AT [PAPAJOHNS.CO.UK](https://papajohns.co.uk) OR VIA OUR APP**

SUNDAY CARVERY

Two-course carvery
£19.95 per person

Served 12pm to 4pm
(last sitting at 3pm)





1		Carlisle United	26	17	4	5	46	27	19	55	
2		Boreham Wood	24	16	5	3	48	22	26	53	
3		Forest Green Rovers	26	15	8	3	44	24	20	53	
4		York City	24	15	7	2	63	26	37	52	
5		Rochdale	22	17	1	4	42	16	26	52	
6		Scunthorpe United	24	14	7	3	41	25	16	49	
7		Southend United	23	12	5	6	35	18	17	41	
8		FC Halifax Town	26	11	5	10	39	36	3	38	
9		Hartlepool United	25	9	10	6	29	21	8	37	
10		Solihull Moors	25	9	7	9	40	37	3	34	
11		Tamworth	26	10	4	12	33	46	-13	34	
12		Woking	25	8	8	9	32	28	4	32	
13		Wealdstone	26	8	8	10	33	41	-8	32	
14		Eastleigh	25	8	7	10	29	34	-5	31	
15		Yeovil Town	26	9	4	13	26	34	-8	31	
16		Altrincham	25	8	2	15	29	40	-11	26	
17		Brackley Town	24	7	5	12	18	30	-12	26	
18		Boston United	26	6	7	13	29	40	-11	25	
19		Braintree Town	26	6	6	14	19	35	-16	24	
20		Aldershot Town	25	6	5	14	41	49	-8	23	
21		Sutton United	24	5	8	11	34	44	-10	23	
22		Morecambe	25	5	5	15	31	55	-24	20	
23		Truro City	25	5	4	16	24	45	-21	19	
24		Gateshead	25	5	4	16	29	61	-32	19	

[illegible]

SQUAD LIST AND SPONSORS

1

NICK TOWNSEND



David Bowen Consultancy

2

RICHARD BRINDLEY



H A LASER

3

JAKE VOKINS



Glanville Solicitors

4

LLOYD HUMPHRIES



Neptune Window Cleaning

5

LUIS FERNANDEZ



Accord Accountants

6

TEMI EWEKA



Candidsky

7

KIERON EVANS



Gascare

9

PAUL MCCALLUM



Hampshire PAT Testing

11

AARON BLAIR



Fred & Alex Cole

12

WILL SPIERS



Available to sponsor

14

JAMES WAITE



Available to sponsor

15

HARVEY SAUNDERS



Charisma Recruitment

16

AARON PIERRE



Vision Financial Strategies

17

JOSH LUNDSTRAM



The Badgeman

18

ANGEL WARUIH



The IRO's

SQUAD LIST AND SPONSORS

20 SAM PEARSON



Available to sponsor

22 JOSH MCNAMARA



Sandgar LLC

23 LOUIE HOLZMAN



Available to sponsor

24 JORDAN COUSINS



CK Scaffolding

26 LUIS GILES



Available to sponsor

27 ARCHIE HARRIS



RSW Law

29 BARNEY STONE



Available to sponsor

30 CONNOR UNDERHILL



WTD Distributions

31 NIAL MAHER



InScapes

34 FREDDIE INGRAM



Available to sponsor

35 COBY KILICK



Available to sponsor

36 ETHAN JONES



Available to sponsor

37 CHASE MICHEL



Available to sponsor

Player sponsorship packages are available at £500 + VAT

Receive a framed, signed shirt or signed photo and get your sponsor logo / name on the player profile in the matchday programme and the official club website.

If you are interested in sponsoring a player, please contact commercial@eastleighfc.com



UPCOMING FIXTURES



EASTLEIGH VS BRACKLEY TOWN

Tuesday 13th January (KO 7:45pm)
Silverlake Stadium



EASTLEIGH VS ALDERSHOT TOWN

Saturday 17th January (KO 3pm)
Silverlake Stadium



SOUTHEND UNITED VS EASTLEIGH

Tuesday 20th January (KO 7:45pm)
Roots Hall



EASTLEIGH VS FC HALIFAX TOWN

Saturday 24th January (KO 3pm)
Silverlake Stadium

Get behind the Spitfires!

Home match tickets are now on sale and available to purchase at
www.eastleighfc.com/tickets
or by scanning the QR code



SQUADS



Manager

Scott **BARTLETT**

- 1 Nick **TOWNSEND** (GK)
- 2 Richard **BRINDLEY**
- 3 Jake **VOKINS**
- 4 Lloyd **HUMPHRIES**
- 5 Luis **FERNANDEZ**
- 6 Temi **EWEKA**
- 7 Kieron **EVANS**
- 9 Paul **McCALLUM**
- 11 Aaron **BLAIR**
- 12 Will **SPIERS**
- 14 James **WAITE**
- 15 Harvey **SAUNDERS**
- 16 Aaron **PIERRE**
- 17 Josh **LUNDSTRAM**
- 18 Angel **WARUIH**
- 20 Sam **PEARSON**
- 22 Josh **McNAMARA** (GK)
- 23 Louie **HOLZMAN**
- 24 Jordan **COUSINS** (C)
- 26 Luis **GILES**
- 27 Archie **HARRIS**
- 29 Barney **STONE**
- 30 Connor **UNDERHILL**
- 31 Niall **MAHER**
- 34 Freddie **INGRAM**
- 35 Coby **KILLICK**
- 36 Ethan **JONES**
- 37 Chase **MICHEL**



Manager

Neil **DANNS**

- 1 Chris **RENSHAW** (GK)
- 2 Dan **PIKE**
- 3 Dylan **DWYER**
- 4 Ted **LAVELLE**
- 5 Tom **MOORE**
- 6 Luke **TABONE**
- 7 Danny **LLOYD**
- 8 Ne-Jai **TUCKER**
- 9 Jordan **SLEW**
- 10 Mo **TOURAY**
- 11 Malakai **McKENZIE**
- 12 Aaron **PICKLES**
- 13 Tony **McMILLAN** (GK)
- 14 Arthur **GNAHOUA**
- 15 Ben **COLLINS**
- 16 Jordan **KEANE**
- 17 Rio **ALSTON**
- 18 Sonny **HILTON**
- 19 Nathan **SANDISON**
- 20 Luke **BURGESS**
- 21 Paul **MURPHY-WORRELL**
- 22 Sam **MINIHAN**
- 23 Dana **AMARAL**
- 24 Will **RUSS**
- 25 Callum **EDWARDS**
- 26 Edy **MAIECO**
- 27 Chris **SZE**
- 28 Luke **GRIFFITHS**

MATCH OFFICIALS



Ross **MARTIN**



Stuart **KANE**



Richard J. **MORRIS**



Benjamin **MCDONALD**

UP NEXT AT THE
SILVERLAKE



V



Tuesday 13th January | 19:45
ENTERPRISE NATIONAL LEAGUE