

# WOKING



vs. YORK CITY

25TH AUG 2025 | 3PM



TEAM NEWS

ANNOUNCED AT 2PM

[CLICK HERE](#)

# HERE FOR THE GAME. AND EVERYONE WHO MAKES IT HAPPEN.

With 450 Enterprise branches across the nation, you'll find us close to all 72 clubs in the National League. So we're proud to be here for everyone. From the fans, to the groundskeeper, to Pam who makes the teas.



 **enterprise**



**NATIONAL  
LEAGUE**  
EST. 1979





THE OFFICIAL MATCHDAY PROGRAMME

# CONTENTS



- 3 MANAGER NOTES
- 5 CEO NOTES
- 10 AHEAD OF THE GAME
- 14 FIXTURES, RESULTS & TABLE
- 18 FIRST TEAM SQUAD
- 20 MATCH ACTION
- 22 THE CARDS TRUST
- 24 OPPOSITION
- 25 JUNIOR CARDINALS
- 26 COMMERCIAL
- 29 ACADEMY
- 32 MATCHDAY HOSPITALITY
- 40 SQUAD LIST

## KEY PERSONNEL

**Board of Directors:** Todd Johnson, Drew Volpe, Emanuele Palladino, George Burnett, Steven Batchelor, Dean Curtis and Kathryn Swallow.

**Chairman:** Todd Johnson

**Managing Director:** Robin Byrne

**Company Secretary:** George Burnett

**Honorary Vice President:** Peter Jordan

**Club Ambassador:** Geoff Chapple

**Commercial, Operations and Club Secretary:** Ben Stone

**Accounts & Finance Manager:** Pam Stevenson

**Food & Beverage Manager:** Lauren Bradbury

**Sales Administrator:** Natasha Fitzgerald

**Media Manager:** Jonnie Green

**Safety Officer:** Sam Newman

**Shop Manager:** Ben Cavey

**Club Chaplain:** Ian Nicholson

## CLUB OWNERSHIP

Woking Football Club Limited is a private company limited by shares registered in England, company number 03329172. Material shareholders holding in excess of 10% of the Ordinary shares of Woking Football Club Limited are currently Mr. Todd Johnson, who controls 85% of the voting rights in the Company through his organisation Cardinal Football Group LLC.





## MANAGER NOTES

# NEAL ARDLEY

**G**ood afternoon and welcome to Adam Hinshelwood and all the staff players & fans of York City.

As we all know it's been a difficult start and not one we saw coming but the boys will need every ounce of your support today to get the tired legs from Saturday through a tough game against the league favourites.

Thank you for your support as always.

**Ards**





F O L L O W  
*your* C L U B  
A L L S E A S O N

Every National League game  
Was ~~£129.99~~ Now **£99.99**

Watch **NLTV** on **DAZN**

Offer ends 31 August 2025



## CEO NOTES

# WELCOME

**W**e're excited to welcome York City to the Laithwaite Community Stadium this Bank Holiday Monday.

To make the most of the occasion, we'll be opening the gates a little earlier

so supporters can enjoy a drink in the sunshine before kick-off. We hope everyone has a fantastic day with us, and here's to an entertaining game of football.

**Robin Byrne**





# 2025/26

## SEASON TICKETS







# IN SAFE HANDS

As a reminder, it is our goal to ensure that all supporters feel safe and welcome at the Laithwaite Community Stadium. To that end, on 11 December 2021, the Club launched the "In Safe Hands" programme to help our fans report racist, sexist, homophobic, or other abusive language simply and anonymously.

If you hear any abusive language, experience it yourself or if you or someone you see feels / looks threatened, you can text the Club anonymously and the message will be monitored by our Safety Officer during the match. Simply text WFC (followed by the nature of your concern and location) to 66777 and we will address your concerns. Example: If you hear racial abuse whilst sitting in the KRE, please send the following text to 66777: "WFC racial abuse centre section of KRE."



# 25 YEARS CHAMPIONING GRASSROOTS

**Shout it from the terraces,  
it's our anniversary!** Since 2000,  
we've been transforming lives,  
giving every community great  
places to play sport. We're not  
finished yet, so here's to more  
game-changing investment.

Search Football  
Foundation  
to find out more



# AHEAD OF THE GAME



## Woking vs York City

Enterprise National League

Monday 25th August 2025

15:00 Kick-Off

**W**oking return to home action with the visit of York City on Monday for a Bank Holiday Monday clash.

Neal Ardley, formerly of the Minstermen, will be hoping to come back and haunt his former side as the Cards hope for fortunes to change after a disappointing start.

The likes of Matt Ward and Inih Effiong missed Saturday's defeat at Hartlepool, whilst Olly Sanderson went off injured, making all three doubts for this one. Woking will be looking for a performance reminiscent of last season's run-in to help against the title favourites, so come down to the Laithwaite and get behind the Cards.

### Opposition Watch

A shock semi-final drubbing against Oldham was a horrible way for Adam Hinshelwood's Minstermen to end last season, but five points from three games is a solid start considering just one of their first four games is at home. That was a disappointing 2-2 draw against Sutton, with a 0-0 at Roots Hall sandwiched between a 2-0 away win at Truro, with four goals in

three games scored a modest start given their firepower.

Ollie Pearce, Josh Stones, Joe Grey, Alex Newby is some forward depth given Pearce's prowess last season, and it's the additions of Grey and Newby that could help fire them to promotion. Grey scored twice on Bank Holiday Monday last year as Hartlepool lost 3-2 to the Cards; some similar entertainment (and a similar result) would be most welcome for the Cards.

### Around the Ground

The gates will open earlier on this Bank Holiday, with the newly refurbished Cardinals bar and the Fan Zone ready to serve from midday.

Tickets are available to purchase until midday [here](#).

### One to Watch

Former Card Joe Felix never really broke into the side during his short stay, but has earned rave reviews at York for his tenacity and quality on the ball from the right hand side.



## TICKETS

**Adults** – £22

**Concessions** – £17

**Next Gen (17-22)** – £13

**Under 17** – £9

**Under 14** – £5

**Carer** – £0

**BUY TICKETS**

### Arriving at the Stadium

**Kingfield Road turnstiles** – blue and yellow entry opens two-and-a-half hours before kick-off, unless otherwise stated.

**Westfield Avenue turnstiles** – red and orange entry opens two-and-a-half hours before kick-off, unless otherwise stated.

**Away supporter turnstiles** – white entry opens two hours before kick-off, unless stated otherwise.

Supporters who have purchased a hospitality package will have green entry and should enter through the Guest Entrance, Kingfield Road.

Supporters are reminded to arrive at the Laithwaite Community Stadium in good time, and are not guaranteed to gain entry in time for kick-off when arriving less than 30 minutes before kick-off.

### Food & Drink at Laithwaite Community Stadium

The Cardinals Bar is located at the front of the stadium.

The bar has full draught and bottle beer options. The Fan Zone is the newest addition for supporters and is located opposite the Cardinals Bar.

Moaners Corner Café is located next Moaners Corners Stand, with hot and cold drinks, plus snacks available.

The Seymours Community Stand has hot food options and a last lane for beverages.

### Club Shop

The Club Shop is open two-and-a-half hours before kick-off, located by the Fan Zone.

The shop is also open Mon – Fri, 10:00 – 16:00, upon check-in at reception.

### Ticketing Information

All Woking FC Season Ticket holders can use their Season Ticket card to enter Laithwaite Community Stadium for all Vanarama National League matches.

Supporters with individual match tickets can use the e-ticket they purchased which was emailed from [noreply@ktckts.com](mailto:noreply@ktckts.com). Such tickets can be scanned on a smartphone or when printed.

Any assistance needed for matchday please contact [tickets@wokingfc.co.uk](mailto:tickets@wokingfc.co.uk), call 01483 772470, or come to reception Mon – Fri, 09:00 – 17:00, or matchdays, 09:00 – half-time.

### Other Information

Away supporter information can be found [here](#).

Directions to the ground are available [here](#).

Disabled access information is available [here](#).

# WOKING FC SOCIAL



@wokingfc

Back at the Laithwaite.



@wokingfc

Defeat in County Durham.  
Alex Reid added a third for the hosts early in the second half.



@wokingfc

This Monday we welcome York City to The Laithwaite Community Stadium, and there's no better way to enjoy the action than with matchday hospitality in the Geoff Chapple Lounge.



@wokingfc

Less than an hour to go until gates open. Supporters are reminded that the east side of the Chris Lane Terrace will be open to home fans...



@wokingfc

The @premierleague returns tonight, so we asked the boys who they think will lift the trophy in May.



@wokingfc

Friday preparations ahead of our trip to @sufcofficial.



Woking FC Official  
Facebook page



Woking FC Official  
Instagram page



Woking FC Official  
YouTube page



HOME



AWAY

# NEW 2025/26 SHIRTS

PRE-ORDER NOW



# FIXTURES & RESULTS

## AUGUST

<b>Sat Aug 9</b>	<b>Carlisle United</b>	<b>0-2</b>
<b>Wed Aug 13</b>	<b>West Ham u21s</b>	<b>0-2</b>
Sat Aug 16	Scunthorpe United	1-3
<b>Tue Aug 19</b>	<b>Wealdstone</b>	<b>1-2</b>
Sat Aug 23	Hartlepool United	<b>0-3</b>
<b>Mon Aug 25</b>	<b>York City</b>	
Sat Aug 30	Morecambe	

## SEPTEMBER

Wed Sep 3	FC Halifax Town	
<b>Sat Sep 6</b>	<b>Gateshead</b>	
Sat Sep 13	Yeovil Town	
<b>Tue Sep 16</b>	<b>Southampton u21s</b>	
<b>Sat Sep 20</b>	<b>Forest Green Rovers</b>	
<b>Tue Sep 23</b>	<b>Sutton United</b>	
Sat Sep 27	Boreham Wood	
Tue Sep 30	Solihull Moors	

## OCTOBER

<b>Sat Oct 4</b>	<b>Truro City</b>	
<b>Sat Oct 11</b>	<b>Emirates FA Cup 4Q</b>	
Sat Oct 18	Altrincham	
<b>Tue Oct 21</b>	<b>Fulham u21s</b>	
<b>Sat Oct 25</b>	<b>Rochdale</b>	

## NOVEMBER

<b>Wed Nov 5</b>	<b>Southend United</b>	
Sat Nov 8	Tamworth	
<b>Sat Nov 15</b>	<b>Boston United</b>	
Sat Nov 22	Aldershot Town	
<b>Tue Nov 25</b>	<b>Brighton u21s</b>	
<b>Sat Nov 29</b>	<b>Brackley Town</b>	

## DECEMBER

Sat Dec 6	Carlisle United	
-----------	-----------------	--

<b>Sat Dec 13</b>	<b>Isuzu FA Trophy R3</b>
<b>Sat Dec 20</b>	<b>Scunthorpe United</b>
Fri Dec 26	Eastleigh
<b>Tue Dec 30</b>	<b>Braintree Town</b>

## JANUARY

<b>Sat Jan 3</b>	<b>Hartlepool United</b>
Sat Jan 17	Wealdstone
Tue Jan 20	Sutton United
<b>Sat Jan 24</b>	<b>Yeovil Town</b>
Sat Jan 31	Forest Green Rovers

## FEBRUARY

<b>Sat Feb 7</b>	<b>Boreham Wood</b>
Tue Feb 10	Truro City
<b>Sat Feb 14</b>	<b>Altrincham</b>
Sat Feb 21	Rochdale
<b>Wed Feb 25</b>	<b>Solihull Moors</b>
Sat Feb 28	Boston United

## MARCH

<b>Sat Mar 7</b>	<b>Tamworth</b>
Sat Mar 14	Brackley Town
<b>Sat Mar 21</b>	<b>Aldershot Town</b>
Wed Mar 25	Southend United
Sat Mar 28	York City

## APRIL

<b>Fri Apr 3</b>	<b>Eastleigh</b>
Mon Apr 6	Braintree Town
<b>Sat Apr 11</b>	<b>Morecambe</b>
Sat Apr 18	Gateshead
<b>Sat Apr 25</b>	<b>FC Halifax Town</b>



# NATIONAL LEAGUE TABLE

P	TEAM	P	W	D	L	GD	POINTS
1	FOREST GREEN ROVERS	4	3	1	0	7	10
2	HARTLEPOOL UNITED	4	3	1	0	7	10
3	SOUTHEND UNITED	4	3	1	0	6	10
4	ROCHDALE	4	3	0	1	6	9
5	SCUNTHORPE UNITED	3	3	0	0	4	9
6	WEALDSTONE	4	3	0	1	3	9
7	CARLISLE UNITED	4	2	2	0	3	8
8	BRAINTREE TOWN	4	2	0	2	1	6
9	BRACKLEY TOWN	3	2	0	1	1	6
10	EASTLEIGH	4	2	0	2	0	6
11	GATESHEAD	4	2	0	2	-4	6
12	YORK CITY	3	1	2	0	2	5
13	BOREHAM WOOD	3	1	1	1	-1	4
14	YEOVIL TOWN	4	1	1	2	-2	4
15	ALDERSHOT TOWN	4	1	0	3	1	3
16	MORECAMBE	1	1	0	0	1	3
17	TAMWORTH	4	1	0	3	-2	3
18	BOSTON UNITED	3	1	0	2	-2	3
19	ALTRINCHAM	4	1	0	3	-3	3
20	SOLIHULL MOORS	4	0	3	1	-4	3
21	FC HALIFAX TOWN	4	1	0	3	-4	3
22	SUTTON UNITED	4	0	2	2	-5	2
23	TRURO CITY	4	0	0	4	-7	0
24	WOKING	4	0	0	4	-8	0



**LAITHWAITE**

INDEPENDENT FINANCIAL ADVISERS

# Growing and protecting your wealth

Proud sponsors of

**Woking Football Club**

The Laithwaite Community Stadium

Investments • Pensions • Protection • Corporate

[www.laithwaiteifa.co.uk](http://www.laithwaiteifa.co.uk)

01483 489895

This is not an invitation or advice to invest. Issued by Laithwaite Financial Services Ltd,  
The Forge, 101 Robin Hood Road, Woking, Surrey GU21 2LS. Registered company 04746423.  
Authorised and regulated by the Financial Conduct Authority, number 225044.





**Mitre**  
DIFFERENT LEAGUE



## PLAYER SPONSORS

# FIRST TEAM 2025/26

### SPONSOR YOUR FAVOURITE PLAYER

For sponsorship enquiries email [admin@wokingfc.co.uk](mailto:admin@wokingfc.co.uk)



**Will Jääskeläinen**

Sponsored by



**Craig Ross**

Sponsored by

Rosemary & Matthew  
Johnson



**Tom Norcott**

Sponsored available



**Aaron Drewe**

Sponsored available



**Caleb Richards**

Sponsor available



**Chinwike Okoli**

Sponsor available



**Timi Odusina**

Sponsor available



**Jamie Andrews**

Sponsor available



**Harry Beautyman**

Sponsored by



**Dale Gorman**

Sponsored by



**Inih Effiong**

Sponsor available



**Aiden O'Brien**

Sponsored by







**Matt Ward**  
Sponsor available



**Joshua Osude**  
Sponsor available



**Tariq Hinds**  
Sponsor available



**Tunji Akinola**  
Sponsor available



**Luke Hall**  
Sponsored available



**Jack Turner**  
Sponsored available



**Jake Hyde**  
Sponsored by  
**LAMA**



**Sam Ashford**  
Sponsor available



**Olly Sanderson**  
Sponsored available



**Timmy Akinola**  
Sponsor available



**Neal Ardley**  
Sponsored by

 **Seymour's**



**Simon Bassey**  
Sponsored available



**Malcolm Jobling**  
Sponsor available



**Dan Rowe**  
Sponsor available



3

HARTLEPOOL

V

WOKING

0

J. FRANCIS, 30'  
C. JOHN, 42'  
A. REID, 48'

# MATCH ACTION



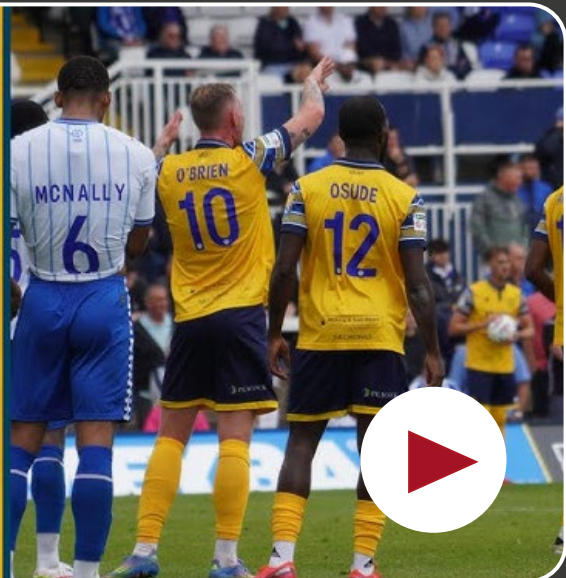
## HIGHLIGHTS



3



0







# the cards trust

woking fc supporters working for their club

## ABOUT

The Cards Trust (Cardinals Supporters Society) has worked with the Club to represent fans for more than a decade. The Trust is a shareholder of the Club (and owns around a quarter of it) and has a representative on the Board to put forward the fans' views.

## MEMBERSHIP

Supporters can join The Cards Trust for just £10 per year. Information about joining is on the Trust website.

## BOOST THE BUDGET

An initiative to help the Club's playing budget with regular contributions. More than £200,000 has gone to the Club throughout the scheme.

## THE 400 CLUB

A prize draw with twelve draws per year. Around £20,000 has been given to support the Club and more than £12,000 in prizes.

## GOLDRUSH

The prize draw that gives back 50% to the lucky winner with a draw at half-time on matchday, with a minimum stake of just £1. The prizes have recently been around £400 and the winning number is announced and displayed on the digital screen at half-time.

## SOCIAL EVENTS AND VOLUNTEERING

The Trust also organises social events and co-ordinates the activities of volunteers. Please get in touch if you would like to help on match days.

## JUNIOR CARDS

A scheme with a range of activities for under 16s including stadium tours and competitions.

## PLAYER AWARD VOTES

The Fans' Player of the Month and Player of the Season polls are conducted by the Trust.

## AWAY MATCH TRAVEL

The Cards Trust arranges coach travel to away matches for supporters at the lowest cost possible. If you are an advertiser that would like to sponsor the travel, please get in touch.

Details of all coaches are available on the Trust website, where tickets can be booked online, usually up to 23:00 on the day before the match. Members and Junior Cards get discounted away match travel.

## SUPPORTERS' LIAISON GROUP

The SLG consults with fans (both Trust members and non-members) and the Club to improve the fan experience. Real change has been made based on ideas from the group including the successful Turner's Tannoy appeal which has financed the recent upgrade in the PA at the stadium.



# THE CARDS TRUST

## THIS WEEK'S UPDATES

### SUPPORTERS COACHES

Supporters Coaches are available for the following trips:

**MORECAMBE**  
30<sup>th</sup> August 2025

[View tickets](#)

**YEOVIL**  
13<sup>th</sup> September 2025

[View tickets](#)

**BOREHAM WOOD**  
27<sup>th</sup> September 2025

[View tickets](#)

**SOLIHULL**  
30<sup>th</sup> September 2025

[View tickets](#)

### JUNIOR CARDS

The Junior Cards returns for the new season! Still just £10 to join! Members receive a Goody Bag or Renewal gift with lots of exciting events and opportunities throughout the season!

**Junior Cards Membership**

### BIRTHDAYS

**Alfie Matthews** - 18th August - 15 years old

### 400 CLUB

The August draw has been made and the winners are:

<b>£100</b>	<b>Number 215</b>	<b>Sheila Brackpool</b>
<b>£75</b>	<b>Number 237</b>	<b>Stephen King</b>
<b>£50</b>	<b>Number 154</b>	<b>Martin Oakley</b>

Congratulations!

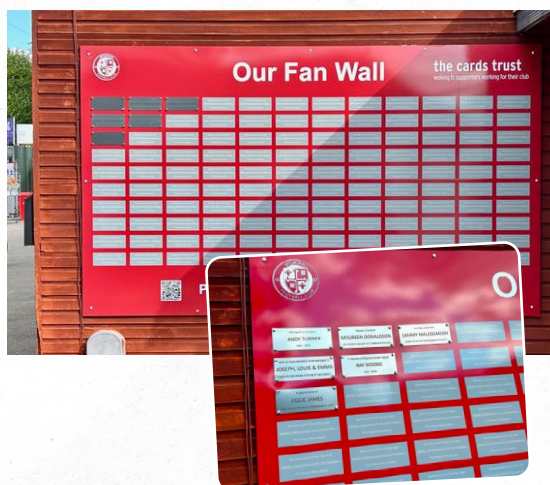
To learn more and to join the 400 club, please contact [john.hooker@cardstrust.co.uk](mailto:john.hooker@cardstrust.co.uk)



# FAN WALL

**T**he wall offers personalised plaques to purchase that enable you to celebrate your favourite player, record your first match, or of course remember a loved one – it is very fitting that Andy Turner has pride of place on the top left plaque. Developed by the Supporters Liaison Group within The Cards Trust, this fundraising initiative will be used by the trust to fund improvements to the spectator experience at the ground, as well as contributing to Boost The Budget and other initiatives to support Woking FC.

You can find out more about how to get your own plaque by visiting <https://www.cardstrust.co.uk/fanwall> (simple login-free access) or by speaking to any Cards Trust official at the game today.



Anyone can purchase a plaque, you don't need to be a member of The Cards Trust, but please consider joining to actively support your club. This is also a great way for anyone who cannot get to The Laithwaite Community Stadium themselves to show their ongoing support for the club.

## SUPPORTERS LIASON GROUP (SLG)

The Supporters' Liaison Group is designed to act as the bridge between all Woking FC fans and Woking Football Club by: Providing communication channels for ALL supporters (whether or not members of the Cardinals Supporters' Society Ltd/Trust) to give constructive comments about issues relating to fan experience for the attention of senior staff and owners of the Football Club. Convening regular liaison meetings directly with senior staff and owners of the

Football Club to facilitate dialogue and ensure ALL fans have a voice on key matters affecting them (in addition to the existing route via the Cardinal Supporters' Society Ltd/Trust representative on the Football Club Board). Encouraging fan consultation on issues affecting supporters.

To contact us, please email [slg@wokingfc.co.uk](mailto:slg@wokingfc.co.uk)

# WELCOME

# YORK CITY

[CLICK HERE](#) for the complete squad list



## LAST 5 SEASONS

2<sup>nd</sup> - 24/25



20<sup>th</sup> - 23/24



19<sup>th</sup> - 22/23



5<sup>th</sup> - 21/22



Aband - 20/21



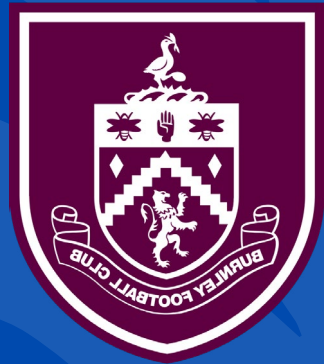




# JUNIOR CARDINALS

GUESS THE PLAYERS

WHOSE BADGE?



## ANSWERS

PLAYERS:  
Richard  
Hugo Ekitike

BADGE:  
Burnley

## INTERACTIVE QUIZ

Welcome to our latest interactive  
quiz of the season, click here to test  
your knowledge...

[CLICK HERE](#)

WOKING FC

# COMMERCIAL



## Cardinals Business Directory

Click here to see our valued sponsors and partners

---

[wokingfc.co.uk](http://wokingfc.co.uk)





# GROUP PERSONAL TRAINING

**50%  
OFF  
FIRST MONTH**

OFFICIAL HYROX  
AFFILIATED GYM



**BOOK NOW FOR A FREE  
TRIAL SESSION!**

scan the QR code to learn more



@the\_lock\_up\_gym  
www.thelockupfitness.com  
Drift road, Maidenhead SL63TZ

# Bringing Your Opto-Mechanical Ideas To Life.

**Advanced Manufacturing and Innovation Services  
in the heart of Woking since 1958.**

Design • Metal Machining • Anodising • Assembly



To find out more,  
scan our QR code



**Vision**  
ENGINEERING  
MANUFACTURING SERVICES

**Lovetts**  
— solicitors —

At Lovetts Solicitors we are here to help you recover your business debts. With **25+ YEARS OF EXPERIENCE** in all aspects of debt recovery, we know exactly how to help you. Send a Letter Before Action (LBA) for as little as £1.50 plus VAT.

- ✓ UK Debt Recovery – Over £48 million collected every year
- ✓ International Debt Recovery – Debt collected in 100+ Countries
- ✓ 24/7 access to an online Client CaseManager portal
- ✓ 86% of LBAs result in payment and require no further legal action

SIGN UP FOR FREE



SCAN ME

**UK & INTERNATIONAL  
DEBT RECOVERY SPECIALISTS**

28

wokington.co.uk [www.lovetts.co.uk](http://www.lovetts.co.uk)

f 01343 47500

info@lovetts.co.uk



# ACADEMY

**T**he Woking FC Academy has been operating in its current format for over a decade with the aim of helping talented young footballers make progress into the club's first team set up or in their sporting careers whilst continuing with their academic studies.

For the 2025/26 season, the youth and academy setup runs in three stages; a pre-academy for six to nine-year-olds, a youth academy for nine to 16-year-olds, and a full-time academy for talented young players above the age of 16, including an education plan.

The Academy works with the Football Club's partner charitable and community organisation, Cardinals in the Community (CITC).

Notable academy graduates in recent history include Woking legends Craig Ross and Joe McNerney, Wrexham's Ollie Palmer, and ex-Chelsea and now-Reading's Jayden Wareham.

## PRE-ACADEMY

The Pre-Academy is for the very youngest players, covering U7s, U8s and U9s. Meeting once a week, players train and learn in a fun and friendly environment under the watchful eye of our coaches. Players that show real talent have the opportunity to progress to Woking FC Academy Youth.

The Pre-Academy trains at The Winston Churchill School in Woking, Thursdays, 17:00 - 18:00.



## YOUTH ACADEMY

Starting with U9s and progressing through the age groups right up to U16s, players train with our Academy coaches and have the opportunity to play competitively in the Junior Premier League. Training is held twice weekly at CITC's sports hub, within the grounds of Woking College, and matches are played on Saturdays. At this level, players are able to continue playing for their grassroots clubs.

As with the main Academy, players receive a progress report twice per season, which helps identify areas of their game to work on and improve. U16s players are assessed throughout the season with a view to being invited to join Woking FC Academy.

## WOKING FC ACADEMY

Woking FC Academy is a National League licensed academy. We aim to develop each and every player to reach their full potential, instilling ambition and a professional attitude. We work as closely as possible to Category 3 Academy standards, creating a professional environment in which players thrive.

Players train 5-6 hours per week at CITC's sports hub. Their development is supported by video analysis of training and matches, group workshops and strength and conditioning sessions. One-to-one reviews are held twice every season, along with player reports so that both the coaching staff and the players themselves have a clear focus on individual development.

Woking FC Academy plays competitive matches in the U18 Isthmian League, U19 National League and also have the opportunity to play in U23 fixtures. Players in our Elite Development Plan (EDP) compete in the Tactic League and National B League. Cup competitions are a feature of the fixture calendar. Pre-season training includes friendlies and there are opportunities to travel abroad for football tours and tournaments, including the Gothia Cup.

Our football timetable is planned in conjunction with players' education. Academy players can

choose to attend Woking College or focus on gaining the NCFE Level 3 Extended Diploma in Sport, which is delivered by SCL Education at Westfield FC. Players on the EDP pathway study towards the NCFE Level 3 Extended Diploma in Sport (equivalent to 3 A levels) with SCL.

## AGE GROUP COMPETITIONS

**Under 23s** - Second and third years (and progressing first years)

**Play in:** Suburban Football League - Premier Division

**Home games:** Knaphill FC, Thursdays, 19:30

**Under 19s** - Second and third years (and progressing first years)

**National League U19 Alliance** - Academy South Division

**Home games:** Westfield FC, weekdays, daytime

**Under 19B** - predominantly U17s - first years  
National League U19 Alliance - Division E  
Woking College, weekdays, daytime

**Under 18s** - predominantly U17s - first years  
Pitching In Isthmian Football League - Youth West Division  
Knaphill FC, Thursdays, 19:30

Players will also have the chance to represent the academy in the prestigious FA Youth Cup.



# Healthcare you can trust

Get the personalised care you deserve, with industry-leading orthopaedic treatment at Nuffield Health Woking Hospital.

From diagnosis to treatment, our expert services include:

- Hip and knee replacement surgery
- Foot and ankle surgery
- Spinal surgery
- Hand, wrist, elbow and shoulder surgery
- Minimally invasive procedures with robotic arm-assisted surgery

Spread the cost of treatment over 8, 10, 12 or 24 months with a 0% interest-free payment plan.\*



# MATCHDAY & BALL SPONSORSHIP

**Booking as part of a business, or simply  
looking to celebrate in added style? Why not  
take out a match or ball sponsorship?**

**You'll receive all the incredible VIP Hospitality  
benefits, plus:**

- Signed home shirt
- Half-page programme promotion
- PA promotion
- Social media and website promotion
- Access to our "Partner Perks" for the 25/26 season
- Full matchday hospitality for a table of ten (add additional guests for only £50 per person)
- Choose player of the match – read out on PA
- Executive VIP parking

## **Match Ball Sponsorship**

- Signed match ball
- Half-page programme promotion
- PA promotion
- Social media and website promotion
- Access to our "Partner Perks" for the 25/26 season
- Full matchday hospitality experience for a table of six (add additional guests)



# PLAYER SPONSORSHIP

**The club are delighted to announce the Player Sponsorship package for the 25/26 season.**

**The club have reviewed the price and enhanced the offer to make supporting your favourite 1st team management or player more accessible and rewarding.**

**From the 25/26 season, player and management sponsors will receive:**

- Signed match worn home and away jerseys near the start of the season presented at our Player & Management Sponsors dinner.
- Dedicated video shout-out from the player on signing and/or on your birthday/special event (or a significant others).
- 2 x hospitality tickets during the season and the opportunity to meet your sponsored player after/before the game.
- Option to attend manager/player meet and greet throughout the season.
- Pre-game scoreboard reel with players and your name/logo next to them.

**To sponsor a player, please email  
Ben Stone: [ben.stone@wokingfc.co.uk](mailto:ben.stone@wokingfc.co.uk)**

# MATCHDAY HOSPITALITY

**Woking Football Club is pleased to  
confirm its matchday hospitality prices  
for the 2025/26 season**

**Enjoy VIP matchday hospitality for only £69 per person at the Laithwaite Community Stadium, giving you that extra luxury and comfort on your match day.**

You will be able to book in advance for all 2025/26 fixtures online once our fixture list has been released on the 9th July.

## **What's included?**

- Two-course meal\* prepared by our in-house chef using locally sourced ingredients, including our sponsor Boz's fruit and veg. This includes a main meal and a hot or cold dessert served pre-match, as well as a cheese board served at full time.
- Executive leather-padded seats in the Seymours Community Stand.
- Dedicated lounge emcee.
- Exclusive bar and drinks options.
- Pre-match first-team management or player visit.
- Hear from the match sponsors' player of the match after the game.
- The lounge opens 1 hour and 45 minutes before kick-off. The meal is served promptly
- 1 hour before kick-off.

## **Single Match Pricing 25/26**

**VIP Hospitality:** £69.00

**Existing Season Ticket Holders:** £54.00

**Under 14's VIP Hospitality\*\*:** £39.00

## **Hospitality Season Tickets**

**VIP Hospitality:** £1,428 (£157 discount)

**Under 14's VIP Hospitality\*\*:** £810 (£90 discount).

Please note – cash is not accepted in the Geoff Chapple Lounge, and we will not accept cash payments on the day.

All payments for hospitality season tickets shall be payable upon booking. If you have already purchased a 2025/26 season ticket and wish to upgrade to hospitality for the season, do so by calling the Club on 01483 772 470.

Hospitality will be bookable online via the online ticketing platform or through the Club phone lines.

## **Other information**

\* Consisting of a main meal and hot/cold dessert served promptly 1 hour before kick-off, and a cheese board for the table to share post-game.

Please share in advance any dietary requirements or allergens so these can be catered for. Please email any dietary requirements or allergens in advance to [events@wokingfc.co.uk](mailto:events@wokingfc.co.uk). The meal menu will be available on match day.

**\*\* Under 14's hospitality will enjoy all the benefits of a VIP Hospitality ticket; however, their main meal options are:**

Cheeseburger & Chips

Hotdog & Chips

Vegan Hotdog & Chips

Chicken Nuggets & Chips

Chicken strips & chips

Chicken burger & chips



# MASCOTS PACKAGE



## There are two options available

**Package One:** Full Experience £120\* (includes match shirt)

\*Current season ticket holders receive a 10% discount (£108 total cost)

- 2025/26 match shirt
- Complimentary match day tickets for 1 adult and 1 child.
- Pre-match stadium tour
- Meet & Greet with photo opportunities with players
- Food & drink voucher.
- Kickabout pitch side as the players warm up.
- Digital programme feature
- Tannoy announcement
- Walk out with the players
- Picture with team captains and match officials
- A Woking FC representative present throughout

**Package Two:** Full Experience £80\* (does not include match shirt)

\*Current season ticket holders receive a 10% discount (£72 total cost)

Includes all the above

A training top will be lent to the mascot to wear during the pitch-walk in the case that you do not have the current 24/25 match shirt.

**Team Mascot Packages are available** – please contact the club for more information.

Please note fixtures are subject to availability, If you have any further questions or special requests please email us.



The perfect way to Rest and Relax after your match day experience



### Exclusively yours to enjoy:



15% off best available rate ([click to book](#))



Versatile dining options



Reduced onsite carparking, £5 per day

For further information and to book

Contact our reservations team:

T: +44 (0) 1483 221 000 | E: [reservations@dtwoking.com](mailto:reservations@dtwoking.com)

T&C's apply. Subject to availability.

DoubleTree by Hilton Woking | Victoria Way | Woking | Surrey | GU21 8EW | T: +44 (0) 1483 221 000 | [dtwoking.com](http://dtwoking.com)



# PEACOCK

**Peacock Construction Ltd are based in Chobham, Surrey.**

We are a family run business with over 30 years experience in the construction industry.

We specialise in all types of construction, from refurbishments, extensions and new build schemes.

We have become a trusted partner for a range of clients from domestic customers to commercial clients including NHS property services.

For more information or a no obligation quote please call Martin 07831 207018 or email [build@peacockconstruction.co.uk](mailto:build@peacockconstruction.co.uk)

# CLOUDTECH24


24/7 CYBER SECURITY OPERATIONS // GLOBAL IT SERVICE DESK

Trusted by over 250 clients globally, CloudTech24 support businesses with cybersecurity and IT support services.

We leverage real-time monitoring to proactively secure devices, cloud platforms, and users.

- ✓ 24/7 IT Support
- ✓ 24/7 Cybersecurity Monitoring
- ✓ Rapid Response and Resolution
- ✓ Partnerships with Leading Vendors



CloudTech24.com 

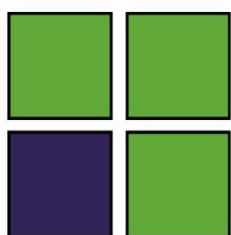
01483608388 



CompTIA ISAO



Microsoft  
Solutions Partner  
Modern Work



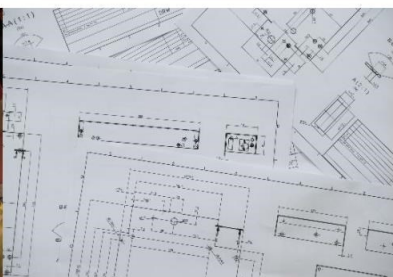
# QUADRIS

Insurance Brokers



WE ARE ABLE TO OFFER COVER FOR ALL CLASSES OF COMMERCIAL AND PERSONAL GENERAL INSURANCE, INCLUDING:

- ✚ COMMERCIAL AND PERSONAL MOTOR INSURANCE
- ✚ COMMERCIAL PROPERTY
- ✚ LIABILITY AND PROFESSIONAL INDEMNITY
- ✚ DIRECTORS & OFFICERS LIABILITY
- ✚ HOUSEHOLD & PERSONAL ACCIDENT



Office: Unit 210a, Lansbury Business Estate, Lower Guildford Road, Knaphill, GU21 2EP

Telephone: +44 (0)208 1441271

Email: [insure@quadrisinsurance.co.uk](mailto:insure@quadrisinsurance.co.uk)

Website: [www.quadrisinsurance.co.uk](http://www.quadrisinsurance.co.uk)



# Trust Us With Your Garden

BOOK A  
**FREE**  
CONSULTATION



Garden Design



Decking



Schools



Paths



Hardscaping



Water Features



Finishing Touches



Developments

**Innovision Landscapes Ltd**  
Vision Construct Accomplish  
[www.innovisionlandscapes.co.uk](http://www.innovisionlandscapes.co.uk) | 01932 943043 | [info@innovisionlandscapes.co.uk](mailto:info@innovisionlandscapes.co.uk)

Get In Touch Today





## WOKING FC

**MANAGER:** NEAL ARDLEY

AARON **DREWE**  
CALEB **RICHARDS**  
CHIN **OKOLI**  
TIMI **ODUSINA**  
JAMIE **ANDREWS**  
HARRY **BEAUTYMAN**  
DALE **GORMAN**  
INIH **EFFIONG**  
AIDEN **O'BRIEN**  
MATT **WARD**  
JOSH **OSUDE**  
CRAIG **ROSS**  
TARIQ **HINDS**  
TUNJI **AKINOLA**  
LUKE **HALL**  
JACK **TURNER**  
JAKE **HYDE**  
SAM **ASHFORD**  
WILL **JAASKELAINEN**  
TIMMY **AKINOLA**  
OLLY **SANDERSON**  
TOM **NORCOTT**



## YORK CITY FC

**MANAGER:** ADAM HINSHELWOOD

HARRISON **MALE**  
RYAN **FALLOWFIELD**  
MARK **KITCHING**  
MALACHI **FAGAN-WALCOTT**  
CALLUM **HOWE**  
ASH **PALMER**  
TYRESE **SINCLAIR**  
ALEX **HUNT**  
JOSH **STONES**  
OLLIE **PEARCE**  
ASHLEY **NATHANIEL-GEORGE**  
JOE **GREY**  
BEN **BROOKES**  
MARVIN **ARMSTRONG**  
DAN **BATTY**  
RICKY **AGUIAR**  
HIRAM **BOATENG**  
GREG **OLLEY**  
JOE **FELIX**  
MO **FADERA**  
PADDY **MCLAUGHLIN**  
OLLIE **BANKS**  
ALEX **NEWBY**  
GEORGE **SYKES-KENWORTHY**  
DARRAGH **O'CONNOR**



**UP NEXT AT HOME**

**GATESHEAD**

**6<sup>TH</sup> SEPTEMBER | 15:00**